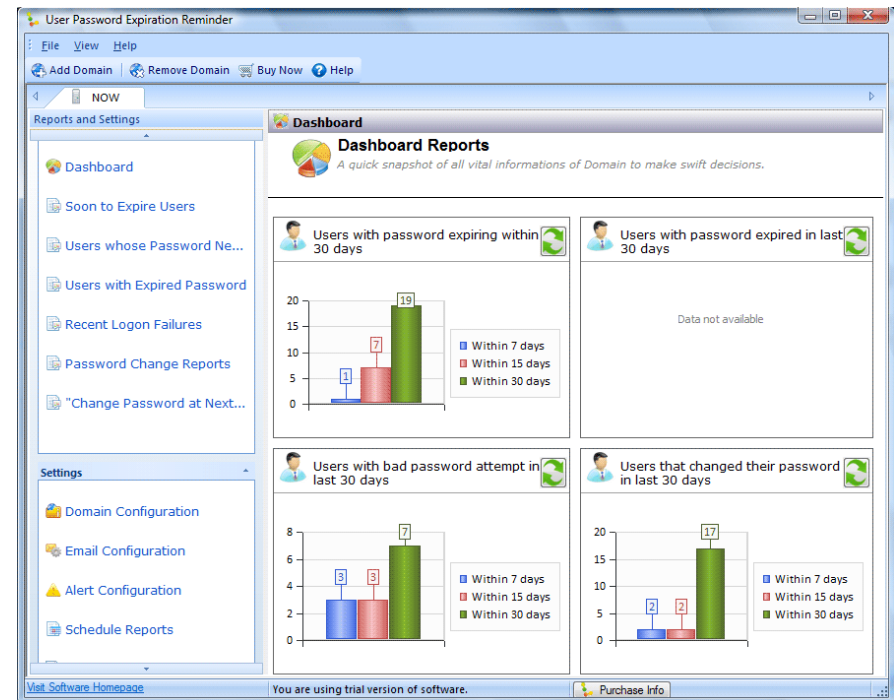




Lepide User Password Expiration Reminder

Key Features of Lepide User Password Expiration Reminder:

- Simple utility to keep a top view of all password expiry issues in the organization
- Insightful reports on users whose password is soon to expire, users whose password never expires, users with expired password, recent logon failures, users who changed password, users whose password is to be changed at next logon
- Monitor any number of domains from one centralized platform
- Works with already existing AD details and compatible with Exchange Server
- Automatic alerts to Users whose password is going to expire
- Once installed it automatically keep tracks of password expiries. No need of manual intervention
- View reports of any users from any domain
- Schedule and receive notifications as per the policy set upon OU's
- Send proactive notification to account mailboxes whose password is about to expire
- Dashboard to provide overview of password expiry status
- Simple and attractive GUI to easily work with the application.



How Lepide User Password Expiration Manager helps you?

- Schedule reports and alerts and be complaint with all password expiration related tasks
- No additional investments required. Install and start using in AD environment
- Sustain compliances by never leaving any AD user with expired password
- Reduce helpdesk call queue by solving all password expiry issues beforehand
- Control multiple domains from one central platform
- Save time and increase employee productivity by proactively managing password expiry issues.

System Requirements:

Basic system requirements	Any of the following OS (32/64 bit)	
<ul style="list-style-type: none">• Pentium Class Processors• 128 MB RAM	<ul style="list-style-type: none">• Windows® XP Professional• Windows Server 2003 /2008/2008 R2 Standard, Data Center, Enterprise• Windows Vista® Business / Ultimate / Enterprise• Windows 7 Professional / Enterprise / Ultimate• Windows 8 Professional / Enterprise / Ultimate	<ul style="list-style-type: none">• Exchange Server 2013 / Exchange Server 2010 / Exchange Server 2007 / Exchange Server 2003 / Exchange Server 2000• Outlook 2013 / Outlook 2010 / Outlook 2007 / Outlook 2003 / Outlook 2002

Helpline:

+1-800-814-0578
+91-9717-393-555

Sales: sales@Lepide.com
Support: support@Lepide.com
General Queries: contact@Lepide.com