

LEPIDE SOFTWARE

What is New in LepideAuditor Suite 15.2?

This document explains what is new in LepideAuditor Suite 15.2.



LepideAuditor Suite



Table of Contents

Introduction	3
1. New Additions	4
1.1 Radar Tab	4
1.2 Notifications.....	5
1.3 SQL Server Health Monitoring	6
1.4 LepideAuditor Suite (Web Console)	7
1.5 “All Environment Changes” Report	8
1.6 LepideAuditor App for Apple iOS.....	9
1.7 Increased Security	9
1.8 Change Backup Snapshot Location.....	10
1.9 Select Components in Health Monitoring	11
1.10 Trial License	11
2. Enhanced Features	12
2.1 Improved User Interface	12
2.2 Improved Android App.....	13
2.3 Default Backup Snapshot Creation.....	14



Introduction

LepideAuditor Suite 15.2 is a one-stop solution for an organization to monitor and audit the different server components. Its main features include live updates, real-time alerts, instant audit reports, audit configuration, audit customization, Web Console for Audit Reports, and scheduling of reports.

You can use LepideAuditor Suite for following functions.

- Auditing & Monitoring of
 - Active Directory
 - Group Policy Objects
 - Exchange Server
 - SharePoint Server
 - SQL Server
- Health Monitoring of
 - Active Directory
 - Exchange Server
 - SQL Server
- Capturing backup snapshots and restoring the state of objects of
 - Active Directory
 - Group Policies



1. New Additions

1.1 Radar Tab

The old “Dashboard” tab has been replaced with an all-new “Radar Tab”. A new addition to this tab is “360° View” that provides a quick view of what all changes are being made in Active Directory, Group Policy, Exchange Server, SQL Server, and SharePoint Server.

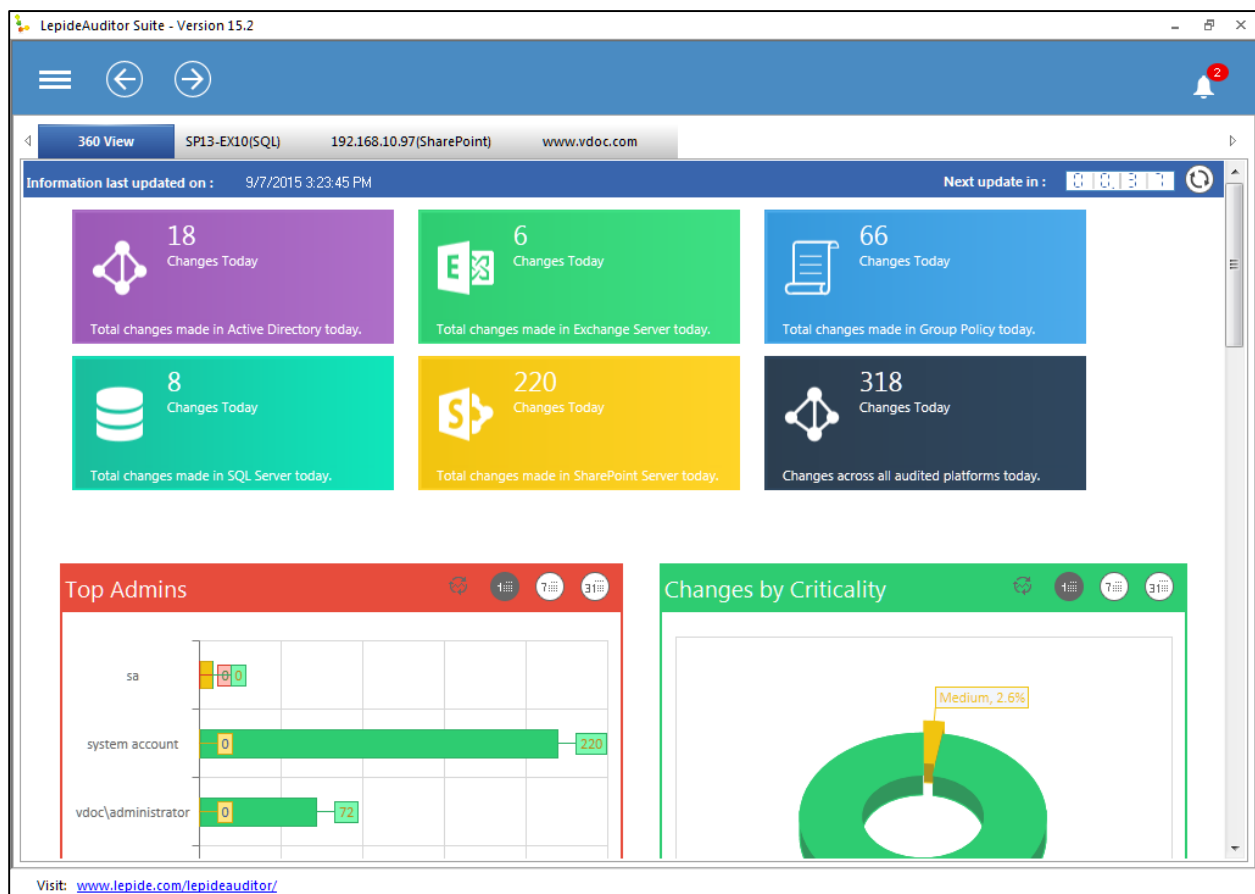


Figure 1: 360° View in Radar Tab

Apart from Top Admins, Changes by Criticality, All Changes by Date, All Changes by Source, All Changes Trend, and LiveFeed, the 360° View tab contains a Resource Utilization report that shows the usage of resources at server components.

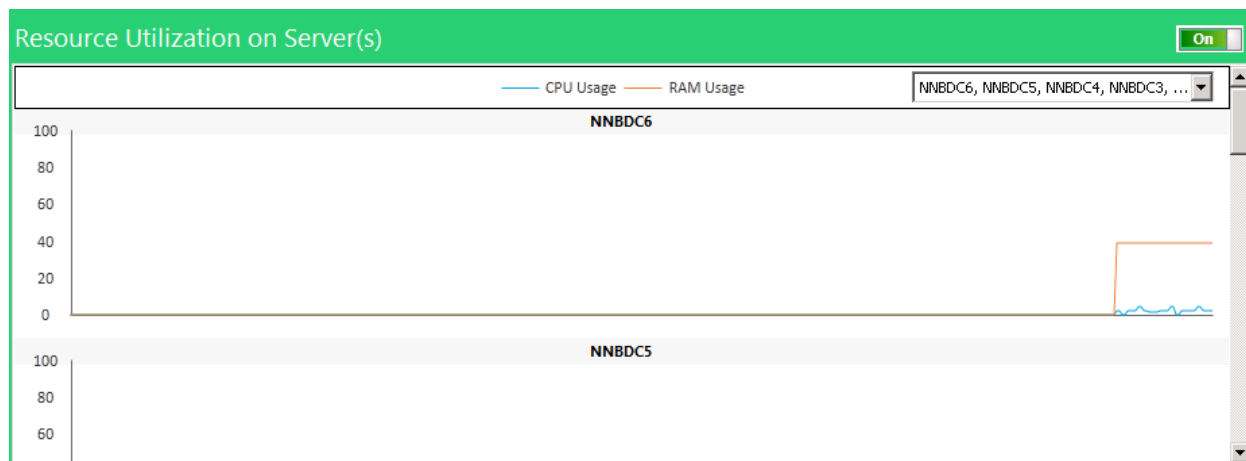



Figure 2: Resource Utilization

You can turn on/off the Resource Utilization report and select/unselect the servers to show/hide their resource usage.

1.2 Notifications

The top navigation bar now contains a notification (bell) icon on the right side. You can click  icon to view the notifications, which shows the issues being faced by the software while auditing the server components.

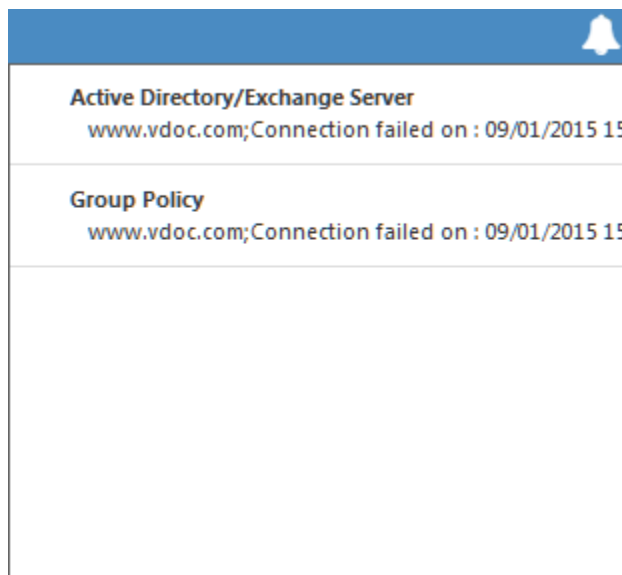


Figure 3: Notifications



1.3 SQL Server Health Monitoring

Health Monitoring of SQL Server has been added in the new version.

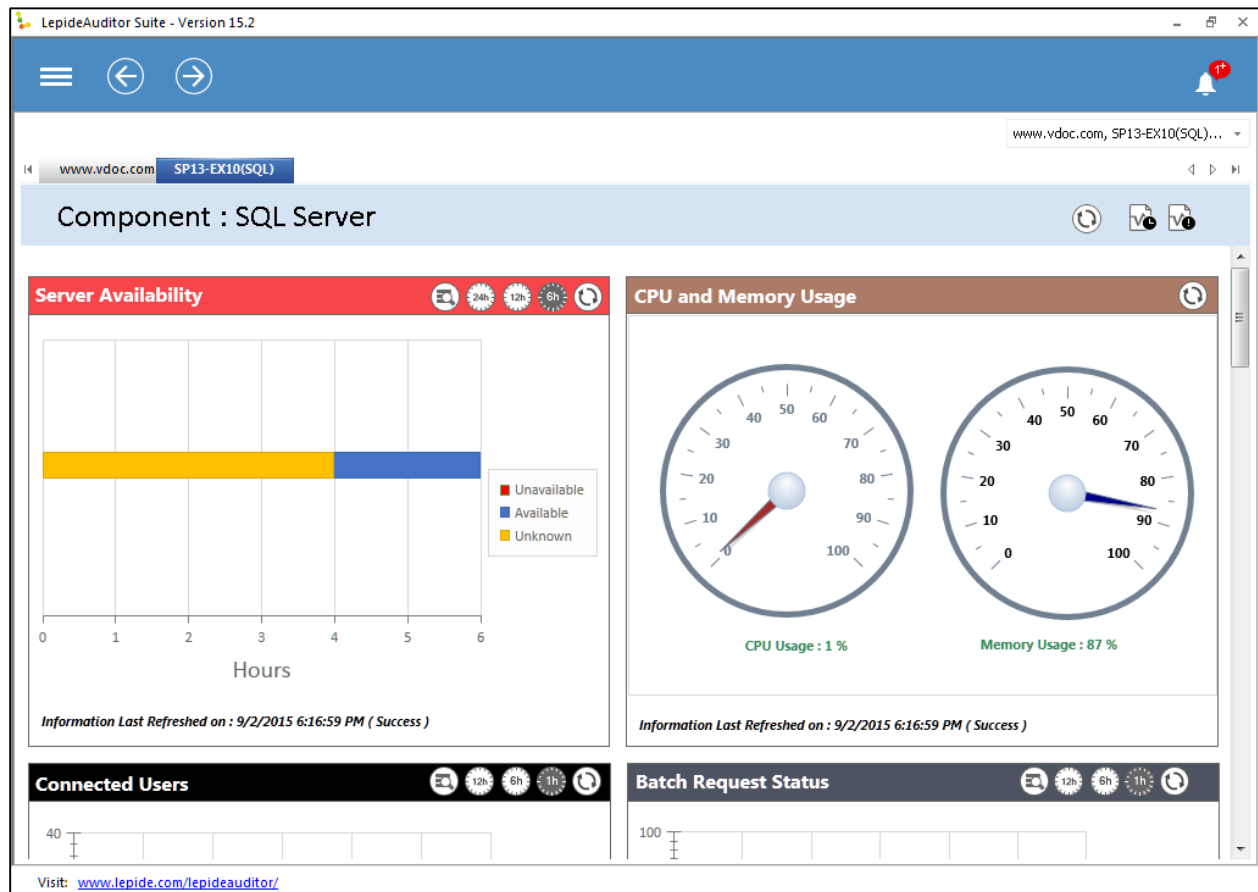


Figure 4: SQL Server Health Monitoring

SQL Server Health Monitoring contains more than 10 reports and lets users create real-time alerts that can be sent to email, LiveFeed updates, and notifications in LepideAuditor App.



1.4 LepideAuditor Suite (Web Console)

The new version of LepideAuditor Suite now contains a Web Console, which in fact is a server that lets the users to access the Audit Reports from anywhere in the network and even from outside network if hosted online.

Administrator first has to create the delegation account to select the users to be delegated. It contains the list of reports, which the users can access. A single delegation account can work for multiple users.

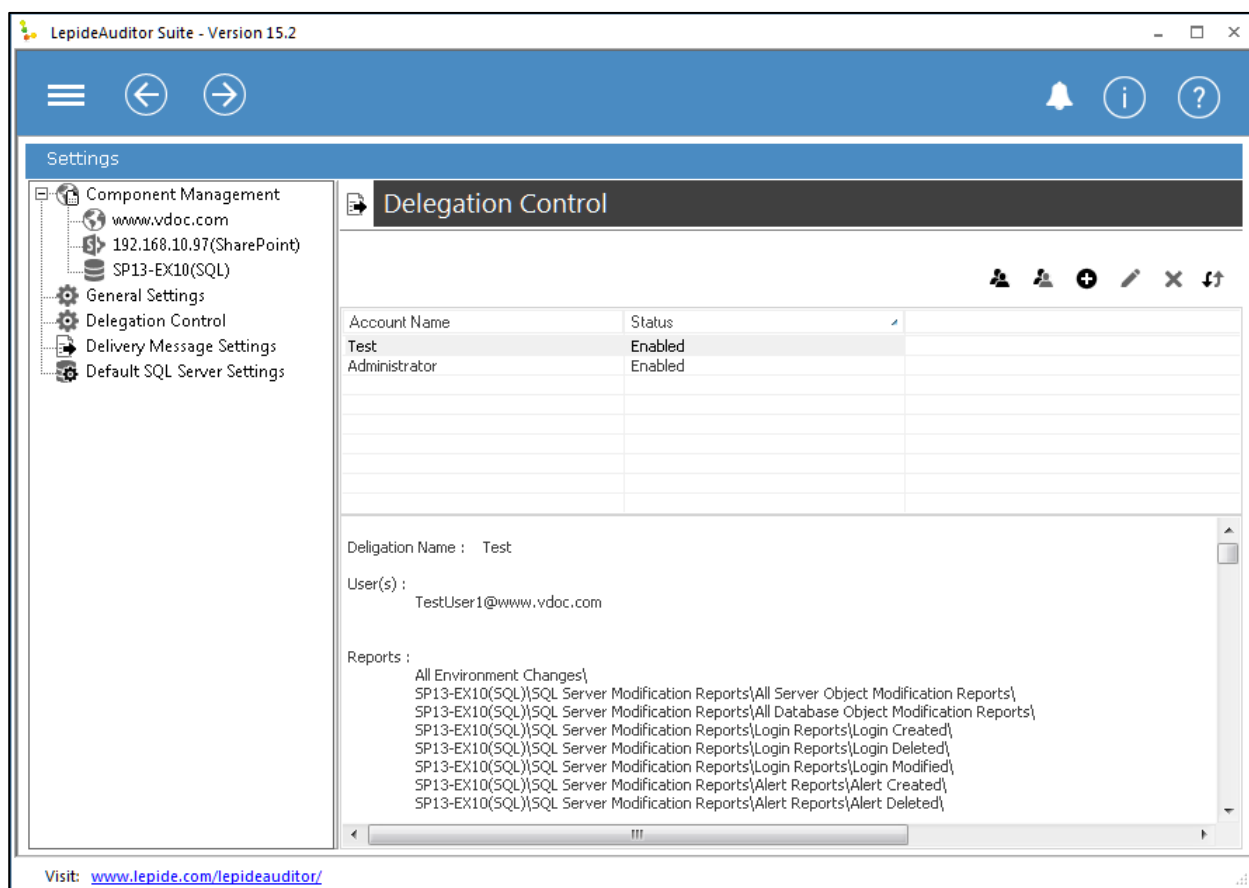


Figure 5: Delegation Control Settings



The users can access the Web Console in the Web browser and login with their Active Directory login credentials. They can view the reports for which they are authorized by the Administrator.

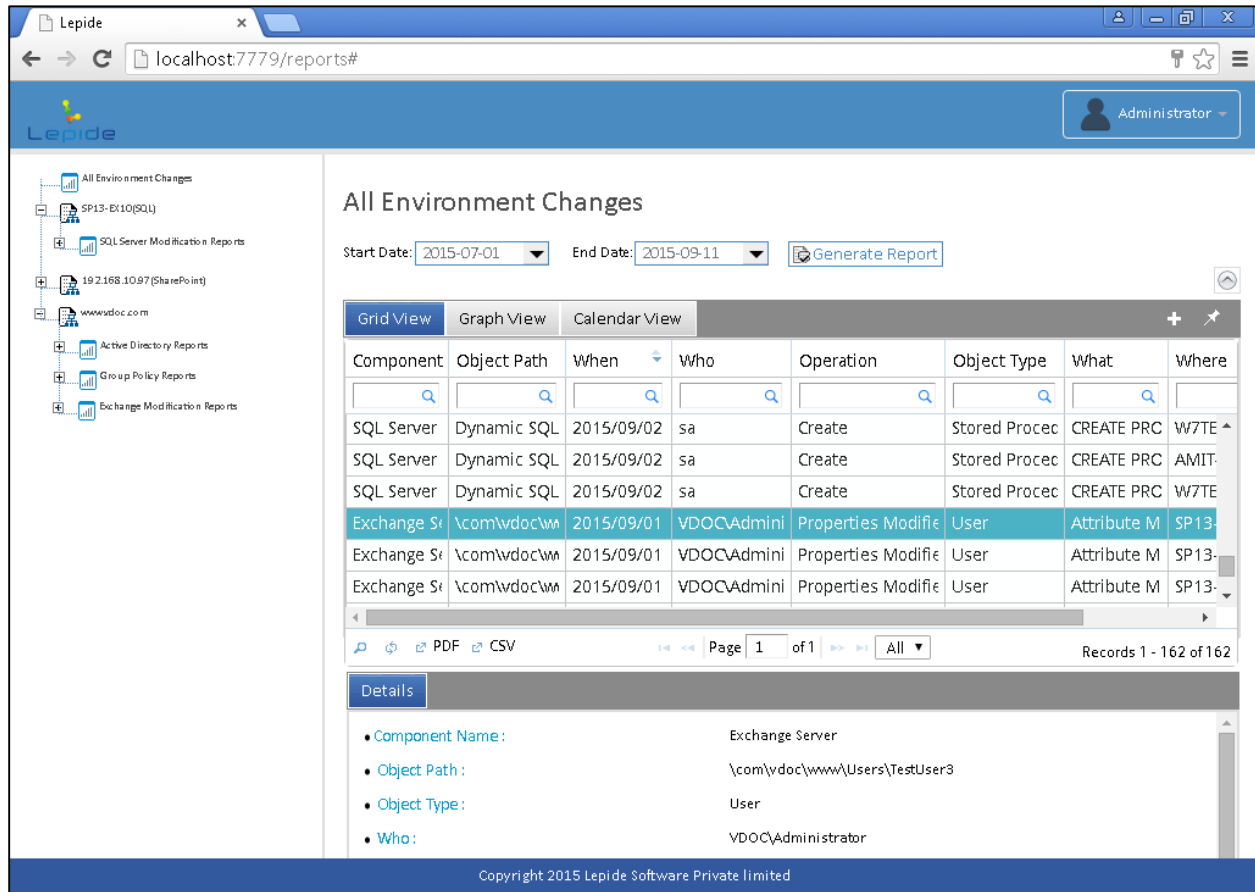


Figure 6: A Report in Web Console

The functionalities of reports in Web Console is quite similar to that is available in Audit Reports Tab of Lepide Auditor Suite.

1.5 “All Environment Changes” Report

This new report has been added in the “Audit Reports” tab and is accessible through Web Console. It displays all changes made in the IT environment.



1.6 LepideAuditor App for Apple iOS

LepideAuditor App is now available for Apple iOS devices. You can download and install the App to view the live notifications. The steps to configure the Apple iOS App are quite similar to that of Android App.

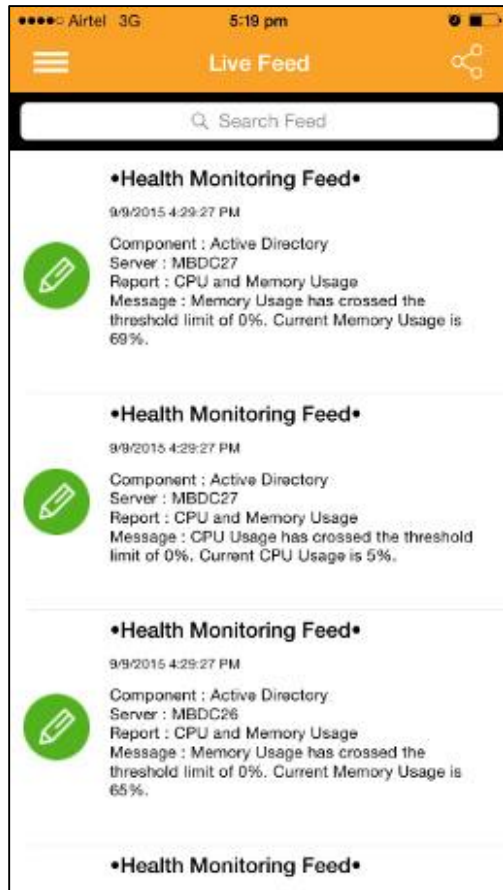


Figure 7: LepideAuditor App



Figure 8: Settings of Auditor App

1.7 Increased Security

The login credentials entered by the Administrator to add and audit server components are now saved in encrypted format. In addition, the auditing logs can be archived with encryption.



1.8 Change Backup Snapshot Location

The Administrator can now change the location where the captured backup snapshots of Active Directory and Group Policy are stored.

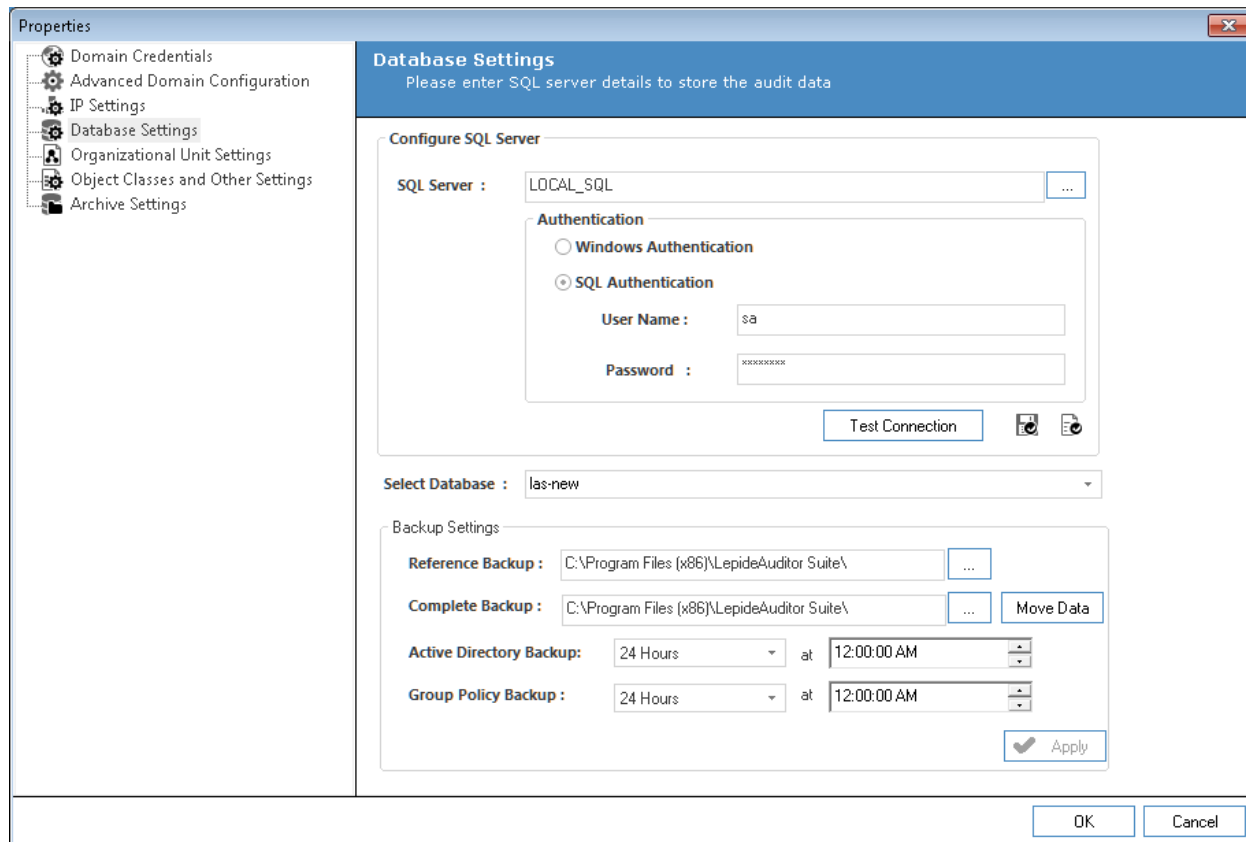


Figure 9: Database Settings displaying the option to change backup location

In the domain properties, the Administrator can use “Move Data” wizard to move the backup snapshots' data from a location to another location.

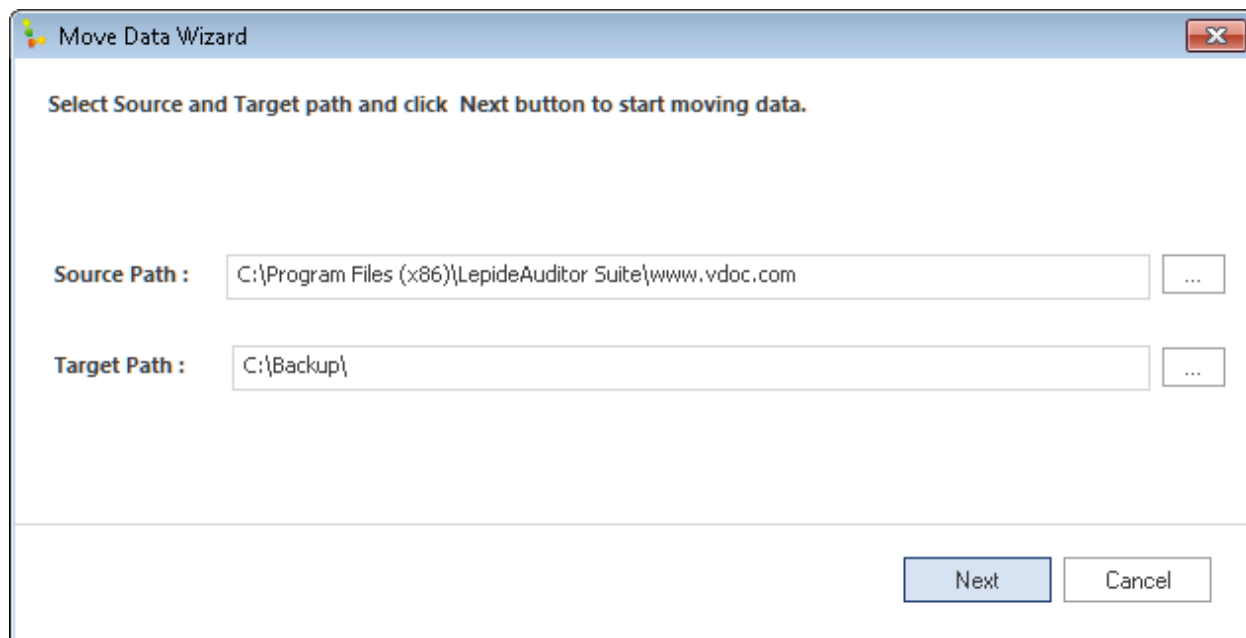


Figure 10: Move Data wizard

1.9 Select Components in Health Monitoring

Health Monitoring Tab now has a component selection drop-down menu on the top-right side. You can select/unselect the components to view their Health Monitoring reports.

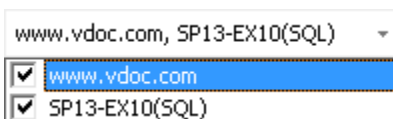


Figure 11: Component Selection in Health Monitoring

1.10 Trial License

15 days Trial License now comes already activated with the software. When you add a domain, SQL Server, or SharePoint, 15-days trial license to audit it will be added by default. After the expiry of the trial period, you have to purchase a license to continue using the software.



2. Enhanced Features

2.1 Improved User Interface

The overall interface of Lepide Auditor Suite has been provided a new look. The menu bar has been removed and tabs are replaced with a vertical pane on the left side. This pane can be shown/hidden using a button on the top Navigation Bar.

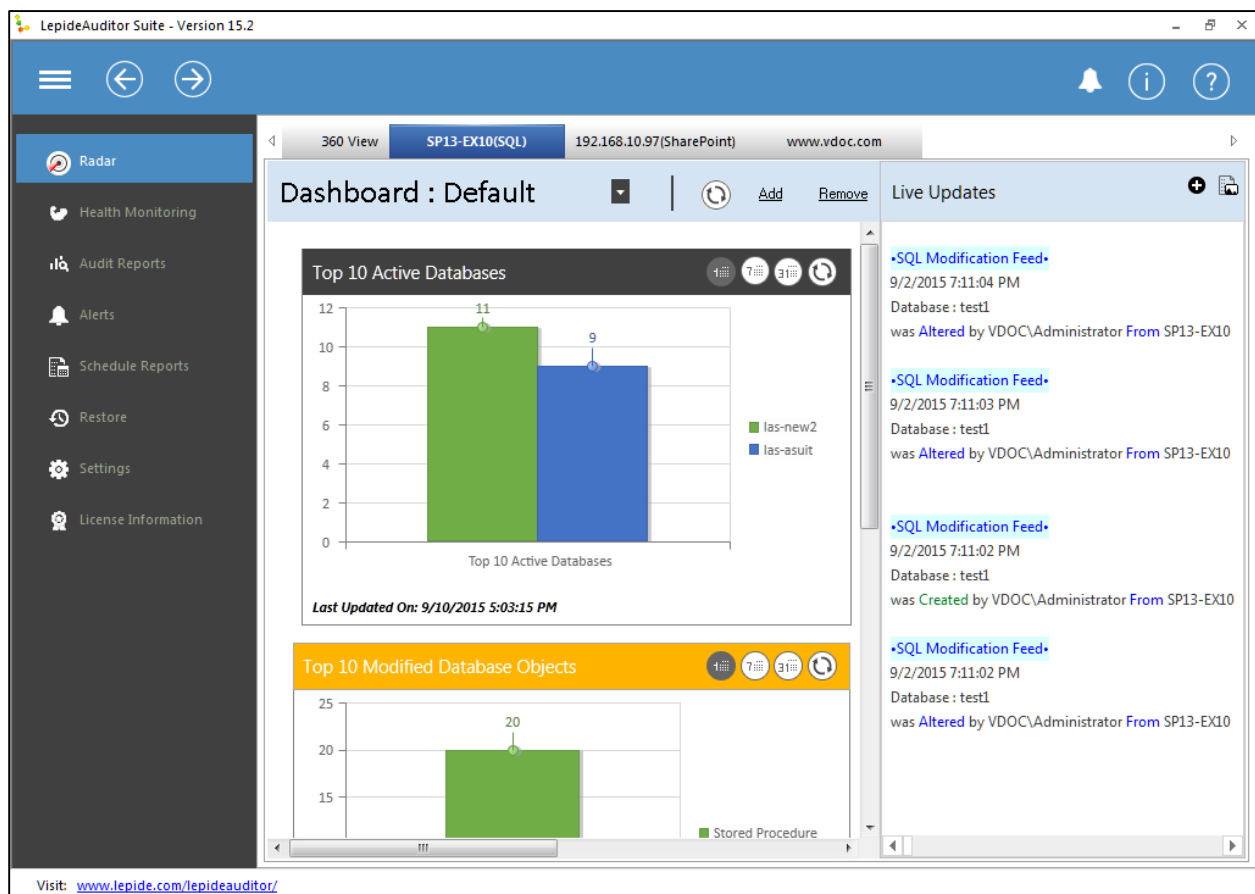


Figure 12: User Interface

Navigation bar also has back and forward buttons to go back and forward respectively.



2.2 Improved Android App

LepideAuditor App for Android devices has been upgraded and its new version is available for download from Google Play Store. The user interface of App has been improved. The menu from above has been removed and a button is placed on the top row to show/hide menu options.

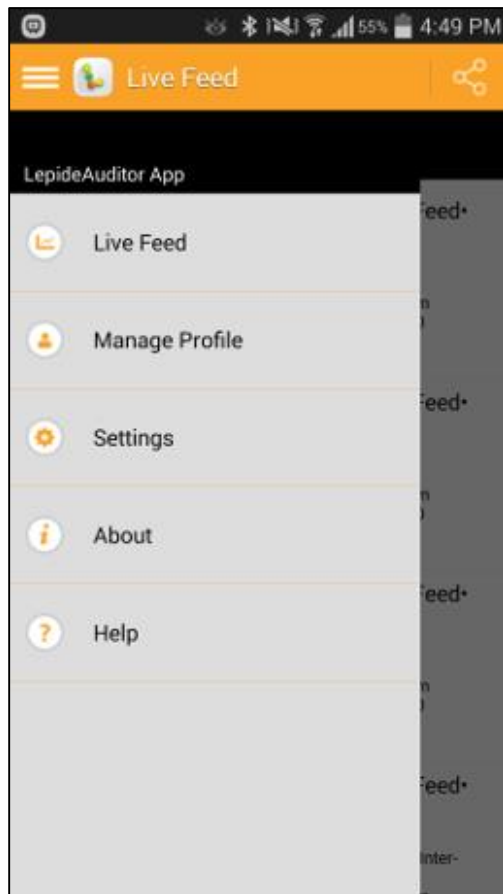


Figure 13: Menu Options

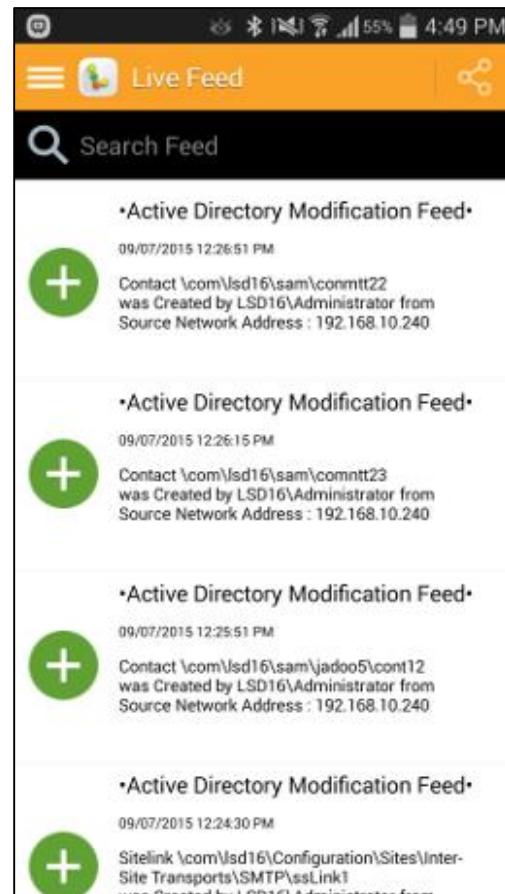


Figure 14: Showing LiveFeed Updates



2.3 Default Backup Snapshot Creation

The default backup snapshots of Active Directory and Group Policy are now captured in every 24 hours at 12:00 AM. You can modify the “Database Settings” of a domain to modify this default backup snapshot creation time and snapshot interval.

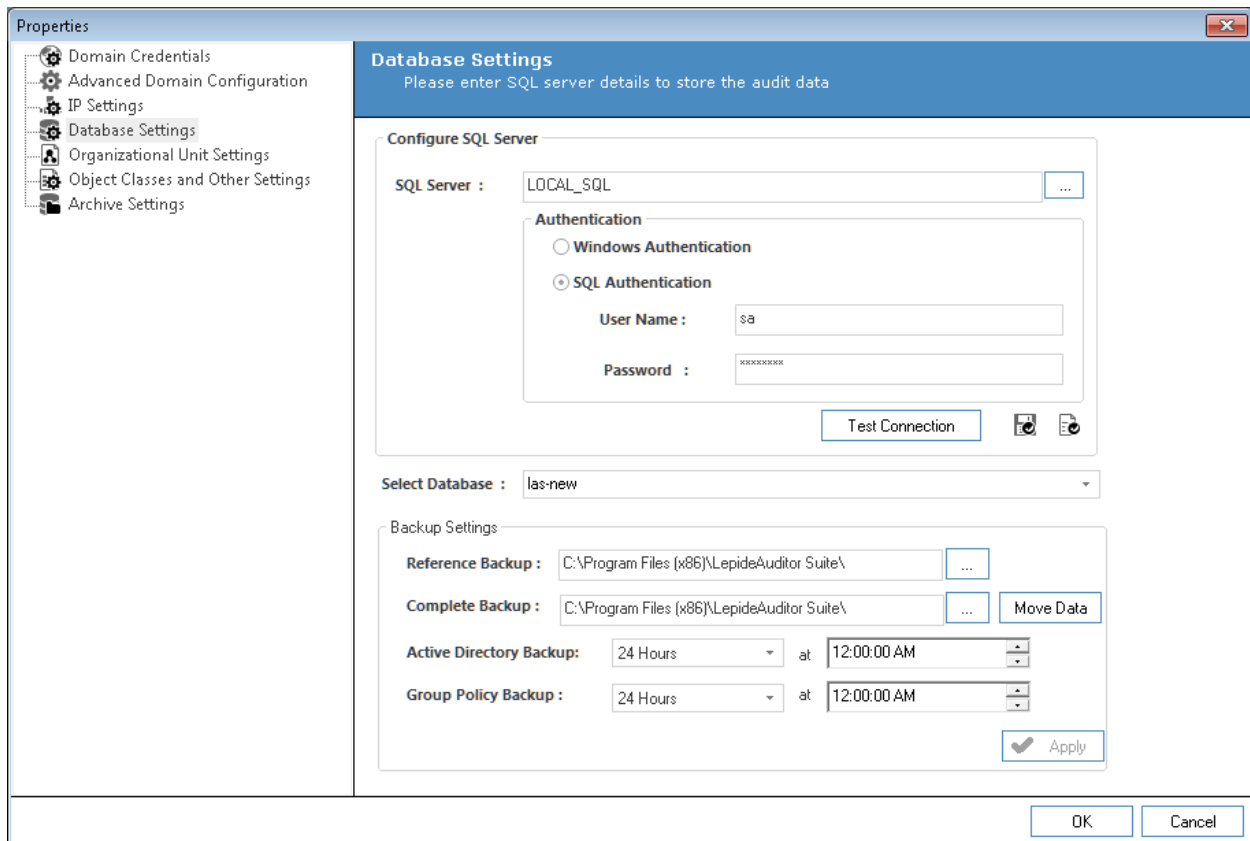


Figure 15: Backup Snapshot Creation Time and Interval