

# What is New in LepideAuditor Suite 16.1?

This document explains the features of newly released  
LepideAuditor Suite 16.1.



## LepideAuditor Suite



---

# Table of Contents

---

1. Introduction.....	3
2. New Additions.....	4
2.1 File Server Auditor .....	4
2.2 Permission Analysis .....	5
3. Enhancements .....	6
3.1 Improved User Interface.....	6
3.2 Improved Report Filters .....	7
3.3 Updated Graph View .....	8



---

# 1. Introduction

LepideAuditor Suite 16.1 monitors and audits the different server components of the IT environment in an organization. Its main features include live updates, real-time alerts, instant audit reports, audit configuration, audit customization, Web Console for Audit Reports, scheduling of reports, password expiration reminder, Active Directory cleanup and mobile Apps to receive instant notifications.

You can use LepideAuditor Suite for the following functions.

- Auditing & Monitoring of
  - Active Directory
  - Group Policy Objects
  - Exchange Server
  - File Server
  - SharePoint Server
  - SQL Server
- Checking the abidance of above server components to the following compliances
  - FISMA
  - GLBA
  - HIPPA
  - PCI DSS
  - SAS
  - SOX
- Health Monitoring of
  - Active Directory
  - Exchange Server
  - SQL Server
- Capturing backup snapshots and restoring the state of objects of
  - Active Directory Objects
  - Group Policy Objects
- Permission Analysis
- Active Directory Cleanup
- User Password Expiration Reminders



## 2. New Additions

Let's have a look at the new additions in version 16.1 of LepideAuditor Suite.

### 2.1 File Server Auditor

Earlier offered as a standalone product, File Server Auditor is now a component of LepideAuditor Suite. It audits the Windows File Systems and NetApp Filers. You can add a File Server from the Component Selection dialog box or Component Management in Settings Tab. A dedicated console named "LepideAuditor for File Server" is there that lets you add, modify and delete a File Server in the auditing list. You can also use this console to customize the auditing of File Server and configure real-time alerts that can be sent as email, text message to cell phone, and message to network recipients.

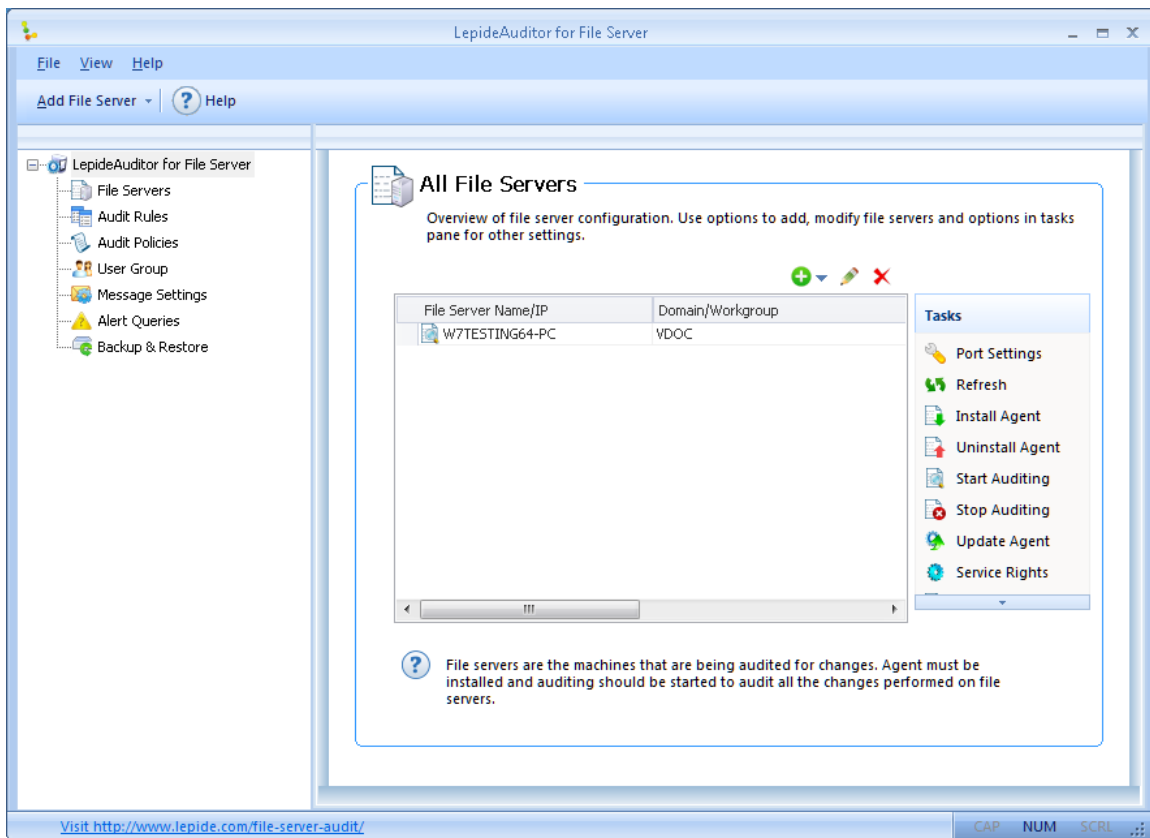


Figure 1: File Server Auditor Console



## 2.2 Permission Analysis

Permission Analysis for File Server has been added. It displays the historical changes in the permissions of files and folders. The administrator can also compare the permissions for the selected file or folder between two time intervals.

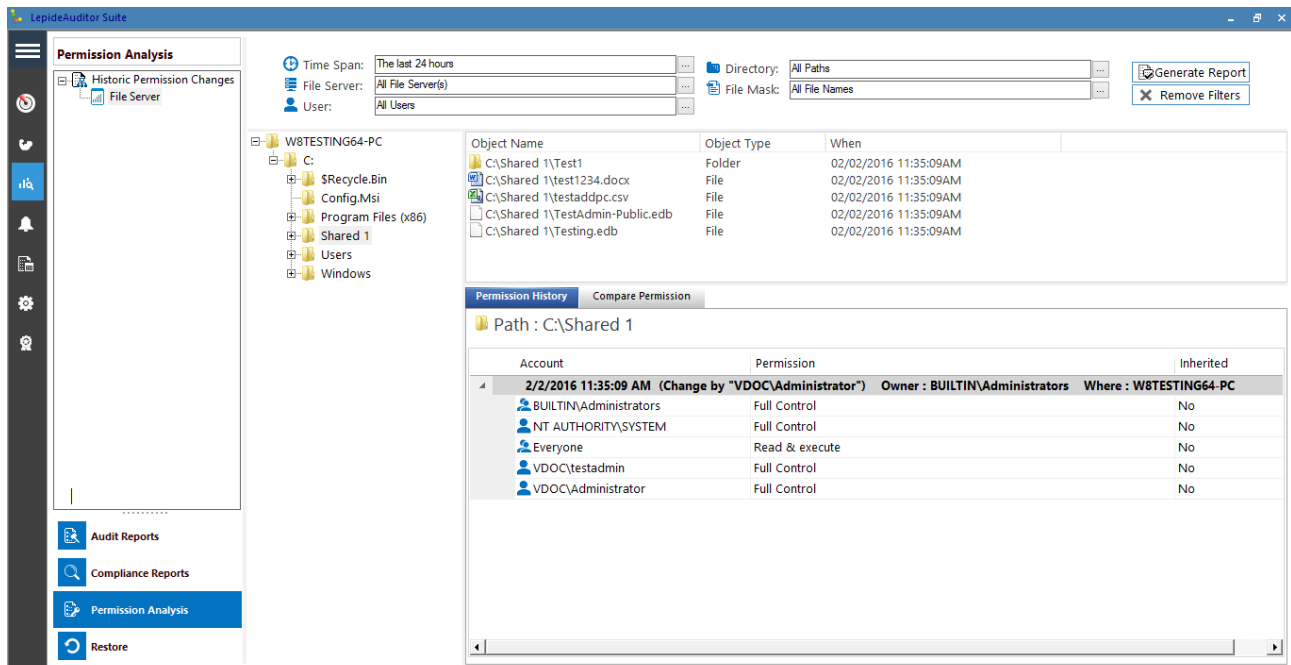


Figure 2: Permission Analysis

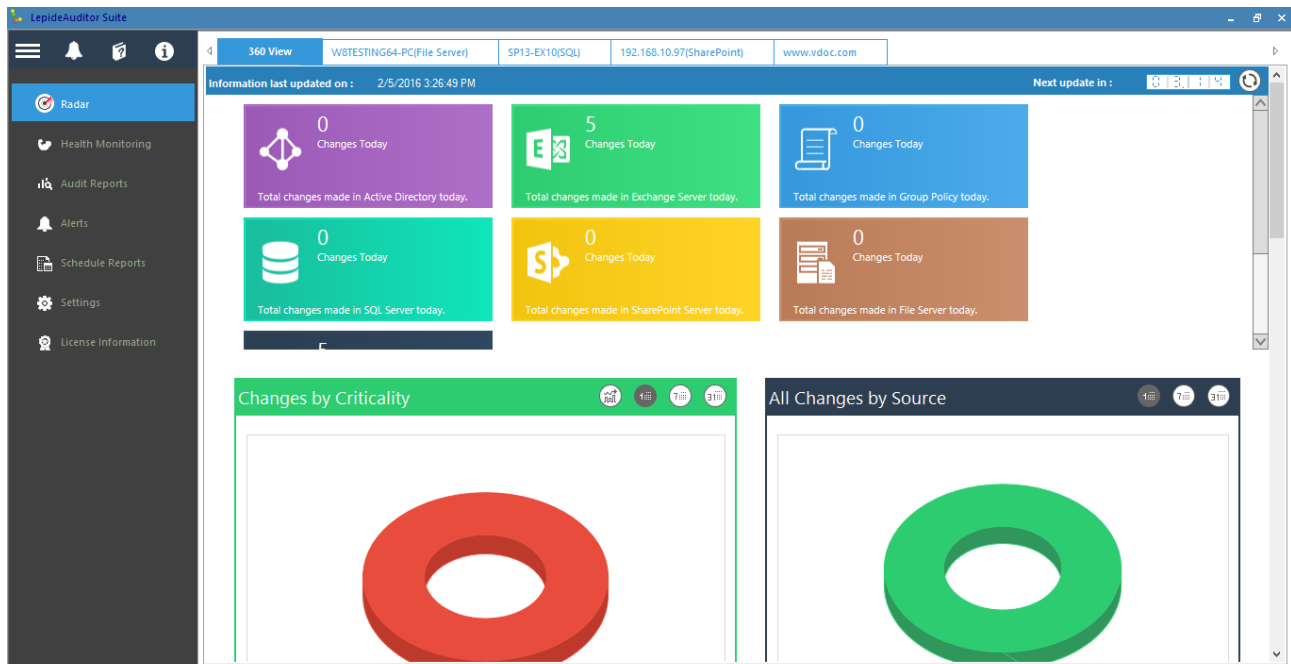


## 3. Enhancements

The following features are enhanced in Lepide Auditor Suite 16.1.

### 3.1 Improved User Interface

User Interface of Radar Tab and static collapsible tab list on the left has been improved. The notification, software information, and help icons are now added in the collapsible tab list.



*Figure 3: New User Interface of Radar Tab and Navigation*

Permission Analysis has also been added as a new section in Audit Reports Tab.



# 3.2 Improved Report Filters

Working and user interface of report filters has been improved in this new version.

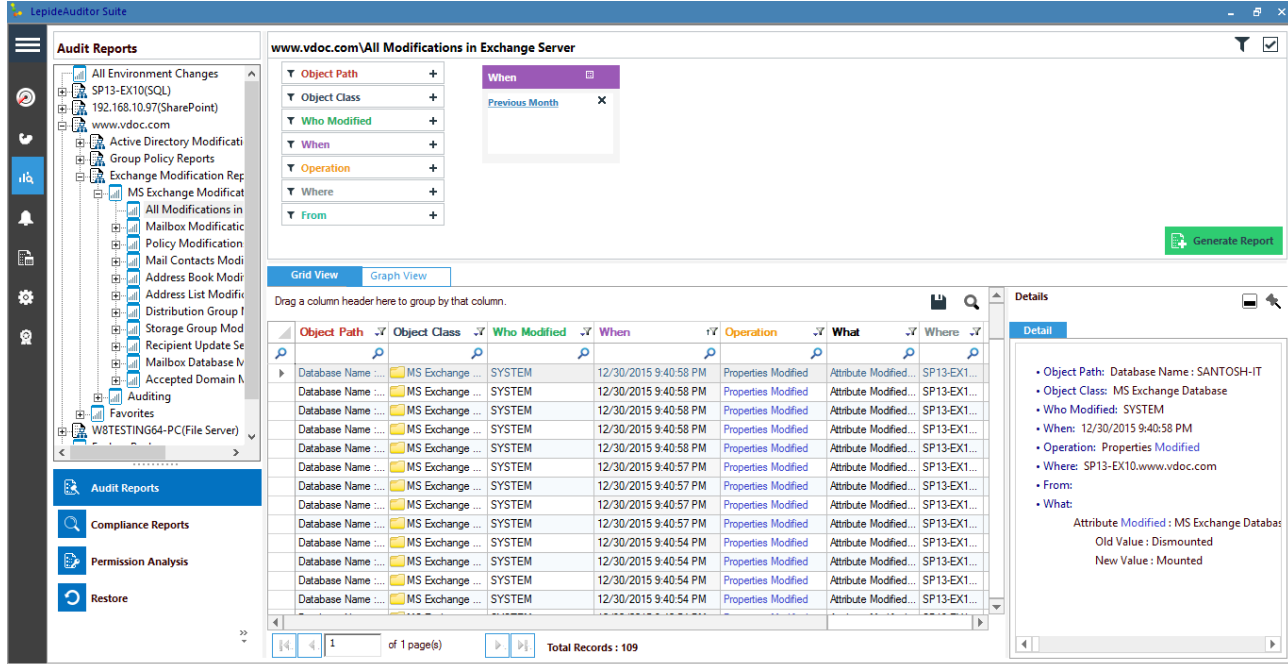


Figure 4: New User Interface of Audit Reports Section

Now multiple conditions with any or all options can be applied to the single column of a report. You can use  icon on top right corner to define if the report has to be generated using any or all filters.

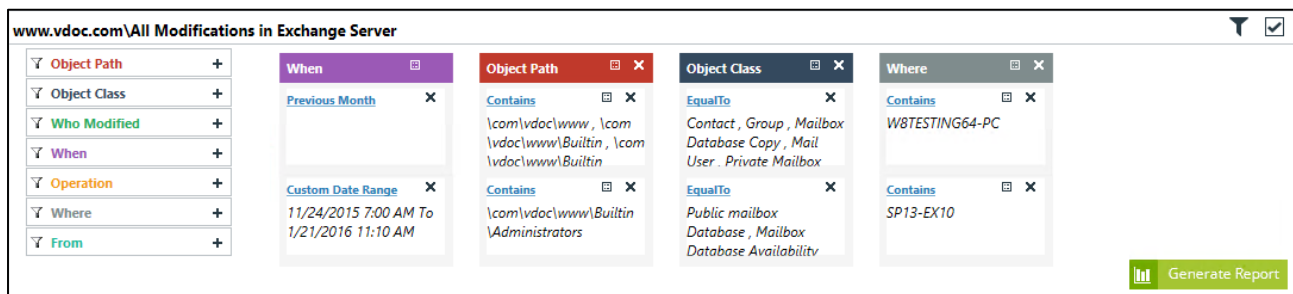


Figure 5: Multiple Filters



### 3.3 Updated Graph View

Graph view of the report has been updated.

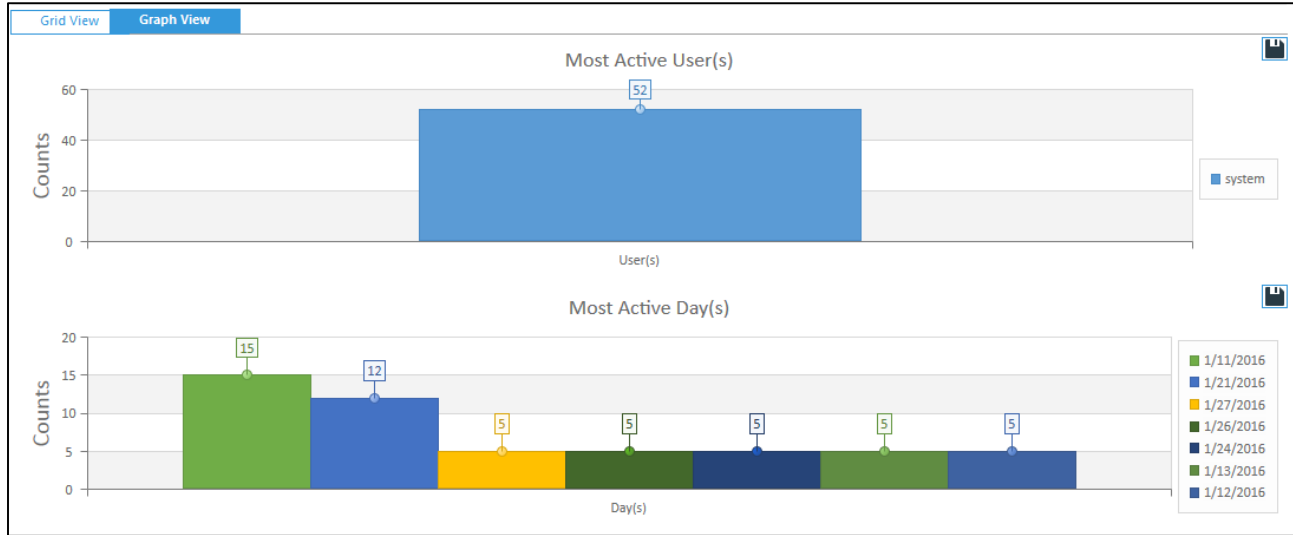


Figure 6: Graph View