

Current Permission Analysis for OneDrive



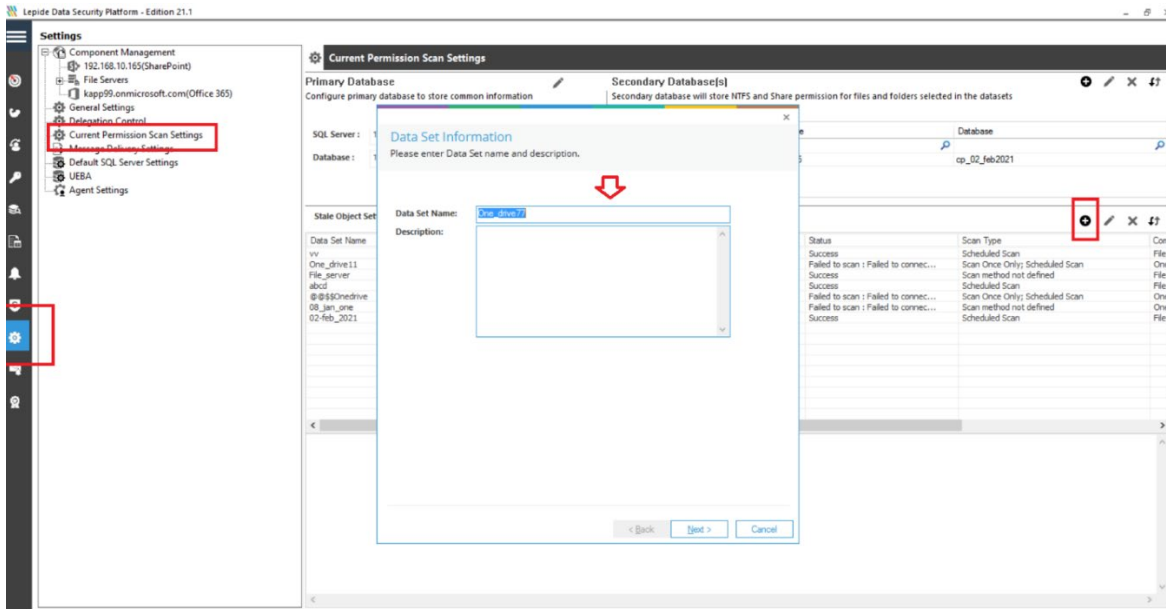
Table of Contents

Scanning OneDrive for Permissions	3
Viewing the Reports	6
Copyright	7
Warranty Disclaimers and Liability Limitations.....	7
Trademarks	8

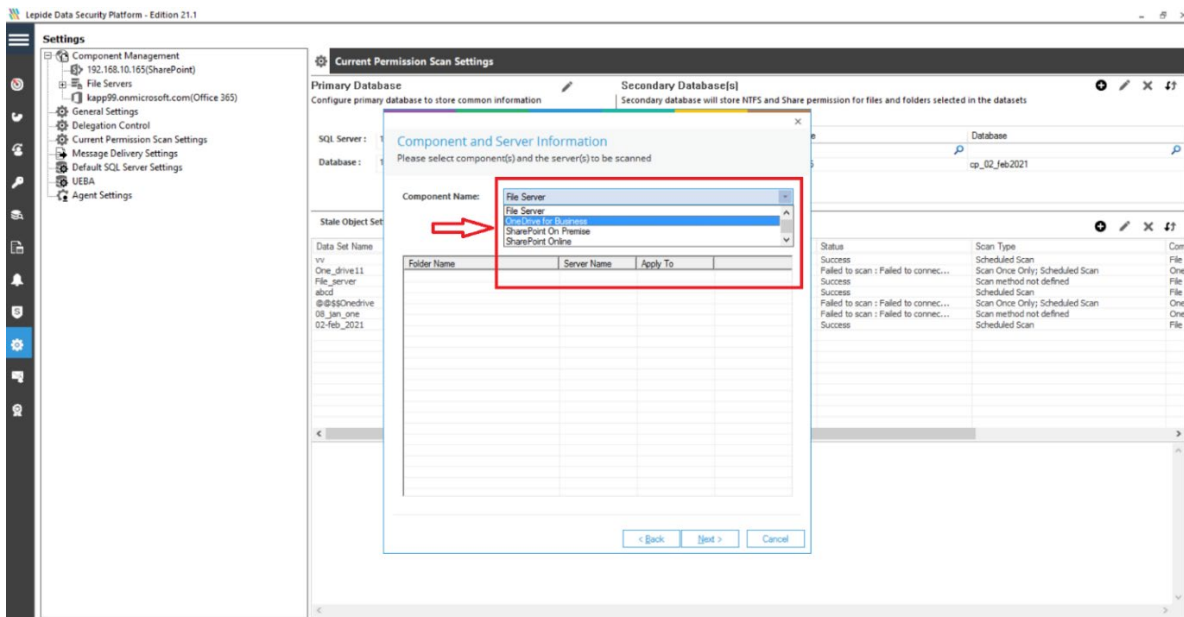
Scanning OneDrive for Permissions

From 21.1 onwards, the solution is offering a capability to scan the permissions for the OneDrive users as well. The component should be added for auditing in the solution to do a permission scan. Please follow the below steps to scan OneDrive for the permissions:

1. Go to Settings Page and Click on the Current Permission Scan Settings. Click on the + icon and create a new Dataset for OneDrive.

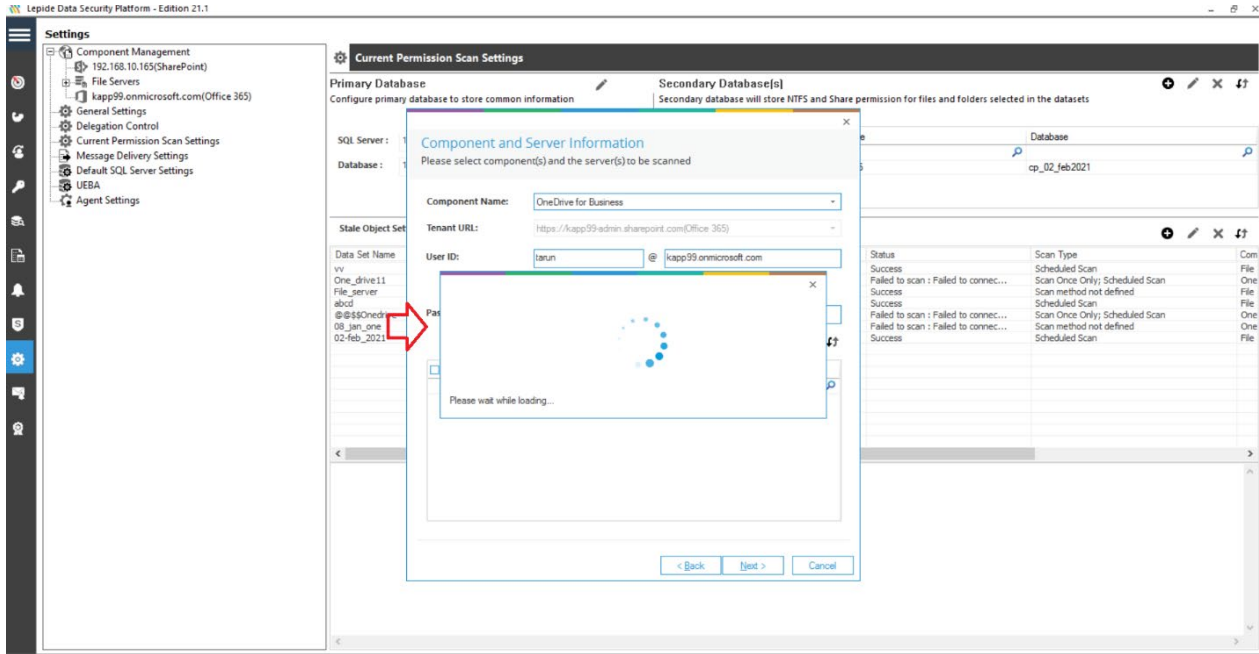


2. In the next window, select component name as OneDrive for Business:

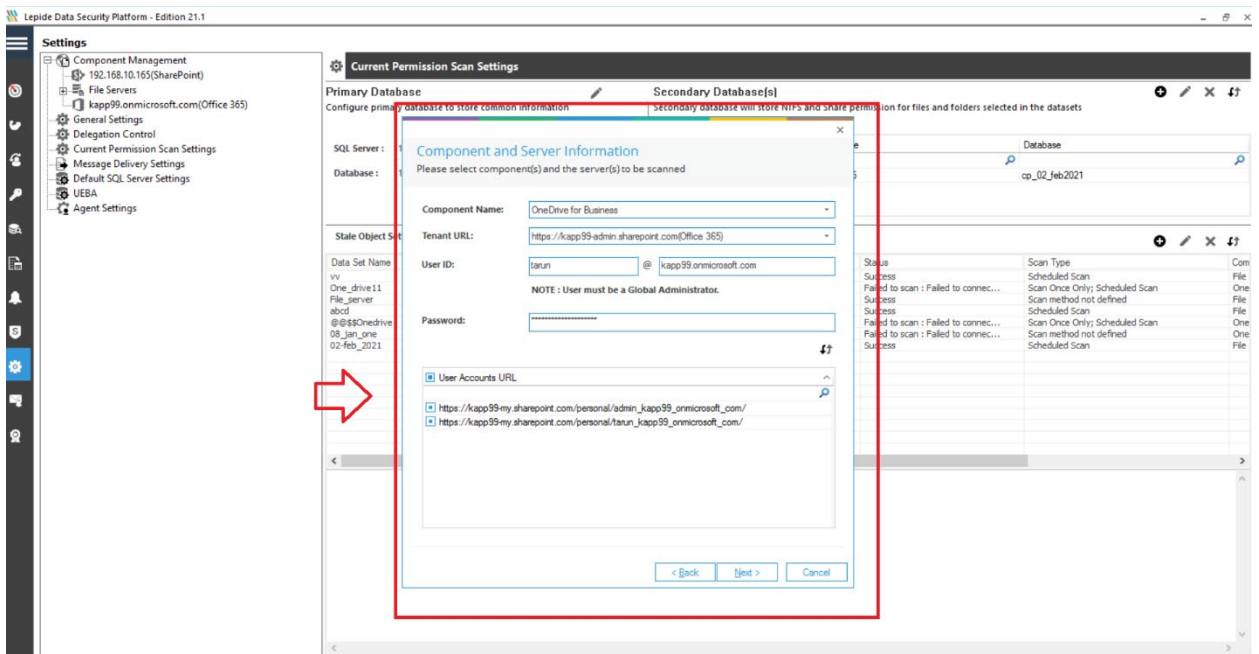


3. Now in component and server information page need to provide following details:

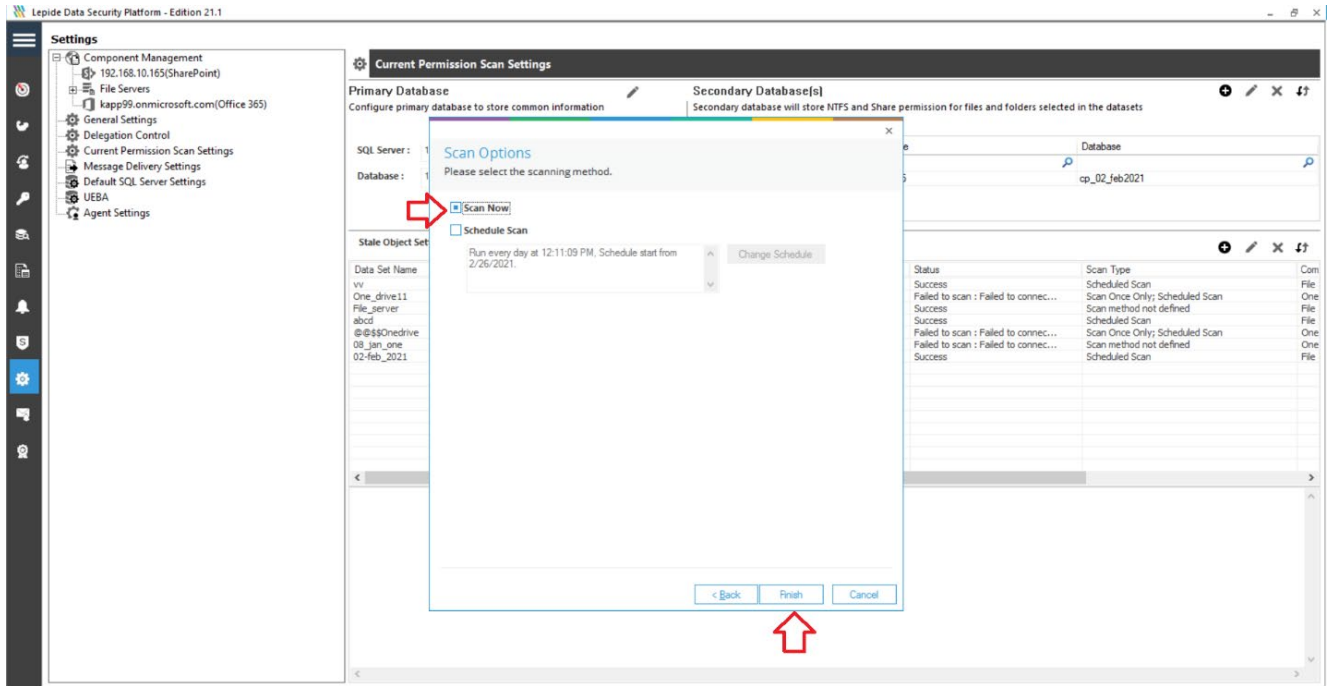
- Tenant URL
- Provide Username and Password (User must be Global admin)
- Now click to refresh User account URL list.



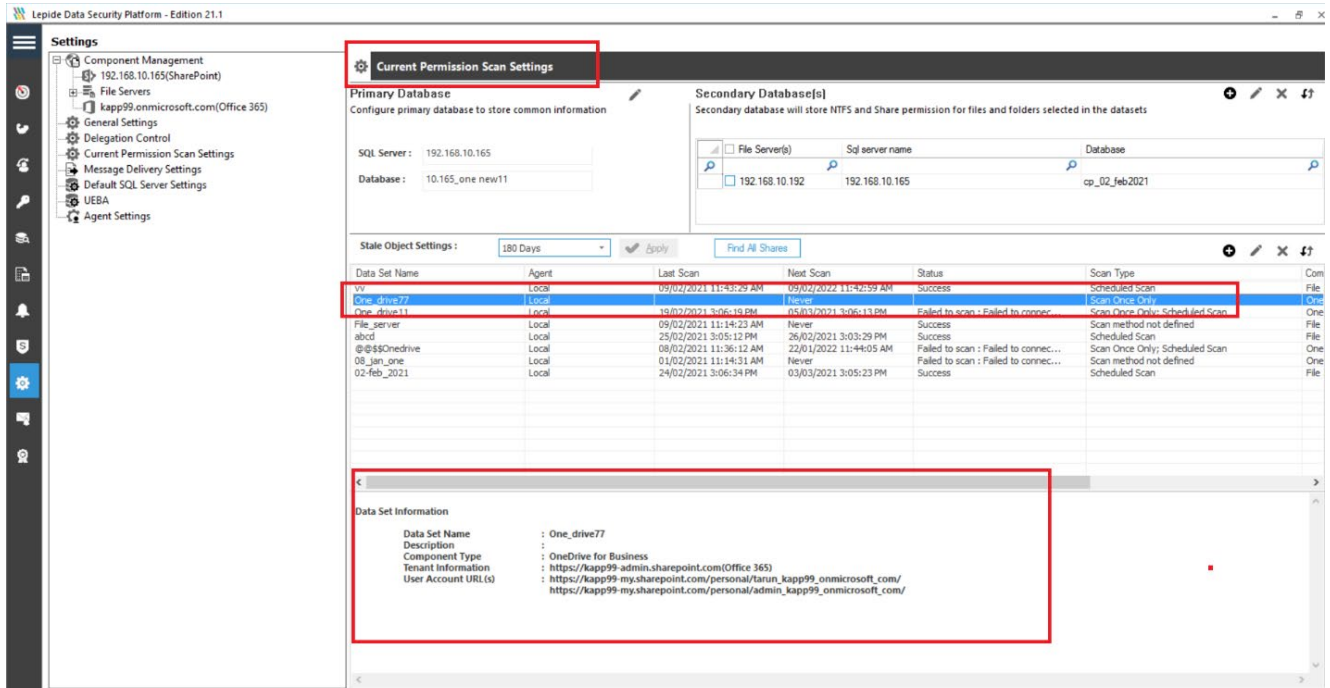
4. Select the URL from the list and click next:



5. Select the Scan Now option or Schedule the scan as per your requirements and Click Finish.



6. The Data Set should be visible on the Current Permission Scan Settings Page.



Viewing the Reports

The reports will be visible under the Permissions & Privileges Page. The report name is Permission By OneDrive for Business Objects.

The screenshot displays the 'Permissions by One Drive for Business Objects' report in the Lepide Data Security Platform. The interface is divided into several sections:

- Navigation Sidebar:** Contains links for Access Governance Dashboard, Historic Permissions Analysis, Current Permission Analysis, Permissions by Object, Permissions by User, Permissions by SharePoint Obj, Permissions by Mailbox, Permissions by One Drive for Business Objects, and Risk Analysis.
- Report Header:** Shows 'Tenant URI' as 'https://lepidesoftware-admin.sharepoint.com' and 'File Mask' as 'https://lepidesoftware-admin.sharepoint.com'.
- Business Objects Table:** A table with columns for Object Name, Object Type, URL, and Last Scan. It lists objects like 'Documents', 'Form Templates', 'Social', and 'Style Library'.
- Permissions Table:** A table with columns for User/Group, Type, Permission Level, and Is Inherited. It lists various users and groups, such as 'Tarun lamba', 'Limited Access System Group', and 'User154', with their respective permission levels.

Support

If you are facing any issues whilst installing, configuring or using the solution, you can connect with our team using the below contact information.

Product experts

USA/Canada: +1-800-814-0578

UK/Europe: +44 (0) -845-594-3766

Rest of the World: +91 (0) -991-004-9028

Technical gurus

USA/Canada: +1-800-814-0578

UK/Europe: +44(0)-800-088-5478

Rest of the World: +91(0)-991-085-4291

Alternatively, visit <http://www.lepide.com/contactus.html> to chat live with our team. You can also email your queries to the following addresses:

sales@Lepide.com

support@Lepide.com

To read more about the solution visit <http://www.lepide.com/data-security-platform/>.

Copyright

Lepide Data Security Platform, Lepide Data Security Platform App, Lepide Data Security Platform App Server, Lepide Data Security Platform (Web Console), Lepide Data Security Platform Logon/Logoff Audit Module, any and all components, any and all accompanying software, files, data and materials, this guide, and other documentation are copyright of Lepide Software Private Limited, with all rights reserved under the copyright laws. This user guide cannot be reproduced in any form without the prior written permission of Lepide Software Private Limited. No Patent Liability is assumed, however, on the use of the information contained herein.

© Lepide Software Private Limited, All Rights Reserved

Warranty Disclaimers and Liability Limitations

Lepide Data Security Platform, Lepide Data Security Platform App, Lepide Data Security Platform App Server, Lepide Data Security Platform (Web Console), Lepide Data Security Platform Logon/Logoff Audit Module, any and all components, any and all accompanying software, files, data, and materials are distributed and provided AS IS and with no warranties of any kind, whether expressed or implied. In particular, there is no warranty for any harm, destruction, impairment caused to the system where these are installed. You acknowledge that good data processing procedure dictates that any program, listed above, must be thoroughly tested with non-critical data before there is any reliance on



it, and you hereby assume the entire risk of all use of the copies of Lepide Data Security Platform and the above listed accompanying programs covered by this License. This disclaimer of warranty constitutes an essential part of this License.

In no event does Lepide Software Private Limited authorize you or anyone else to use Lepide Data Security Platform and the above listed accompanying programs in applications or systems where Lepide Data Security Platform and the above listed accompanying programs' failure to perform can reasonably be expected to result in a significant physical injury, or in loss of life. Any such use is entirely at your own risk, and you agree to hold Lepide Software Private Limited harmless from any and all claims or losses relating to such unauthorized use.

Trademarks

Lepide Data Security Platform, Lepide Data Security Platform App, Lepide Data Security Platform App Server, Lepide Data Security Platform (Web Console), Lepide Data Security Platform Logon/Logoff Audit Module, Lepide Object Restore Wizard, Lepide Active Directory Cleaner, Lepide User Password Expiration Reminder, and LiveFeed are registered trademarks of Lepide Software Pvt Ltd.

All other brand names, product names, logos, registered marks, service marks and trademarks (except above of Lepide Software Pvt. Ltd.) appearing in this document are the sole property of their respective owners. These are purely used for informational purposes only. We have compiled a list of such trademarks, but it may be possible that a few of them are not listed here.

Microsoft®, Windows®, Windows Server®, Windows Server 2008®, Windows Server 2008 R2, Windows Server 2012®, Windows Server 2012®, Windows Server 2012®, and Windows Server 2016® are either registered trademarks or trademarks of Microsoft Corporation in the United States and/or other countries.