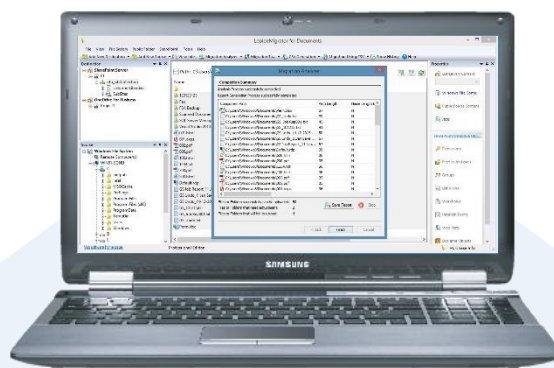


Lepide Event Log Manager provides a simple, yet comprehensive way of collecting, organizing, archiving and reporting based on event logs we collect. From a single console you can easily browse the logs, create real time alerts for specific events and run countless reports or create your own. It's been designed to help address common challenges surrounding IT security, systems management and regulatory compliance.



Key Features

- ❑ Collect and consolidate Windows and W3C event logs from across the network and get quick insights.
- ❑ Logs are stored in a secure, centralized place so that they cannot be deleted or tampered with.
- ❑ Provides real time alerts to inform you of security breaches, performance and health problems, and compliance glitches.
- ❑ All event logs are stored and managed from one place.
- ❑ You can search and filter in the years of log repository for a single piece of information
- ❑ Comprehensive reporting for security, system management and compliance standards like ISO, PCI, SOX, HIPAA, and GPG 13

Contact Details

Product Experts



USA/Canada: +1-800-814-0578
UK/Europe: +44 (0)-845-594-3766
Rest of the World: +91 (0)-991-004-9028



sales@leptide.com

Technical Gurus

USA/Canada: +1-800-814-0578
UK/Europe: +44 (0)-800-088-5478
Rest of the World: +91 (0)-991-085-4291

support@leptide.com

Basic System Requirements

- .NET Framework 4 or later
- SQL Server (located anywhere in the network)

Basic System Requirements

- Pentium 4 Class or higher Processor
- Recommended 2 GB RAM
- Disk space as per database size (2 GB minimum)

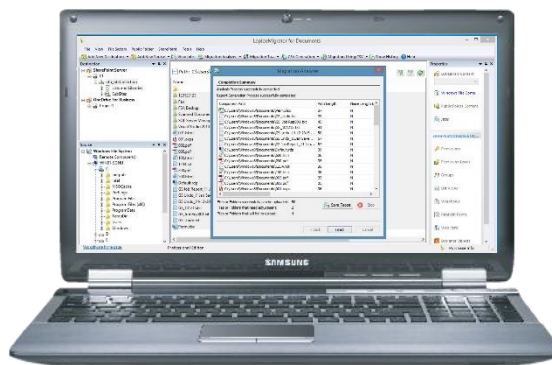
Supported Windows and Servers

Following Windows Operating Systems of both 32-bit and 64-bit editions are supported:

- Windows Server 2000 (32/64 bit), Windows Server 2003 (32/64 bit), Windows Server 2008 (32/64 bit), Windows Server 2008 R2 (32/64 bit), Windows 2012 (32 and 64 bit), Windows Vista (32/64 bit), Windows 7 (32/64 bit), Windows 8 (32/64 bit), Windows 8.1 (32/64 bit), Windows 10 (32/64 bit), VMWare

Supported SQL Servers:

- SQL Server 2000, SQL Server 2005, SQL Server 2005 (Express Edition), SQL Server 2008, SQL Server 2008 (Express Edition), SQL Server 2008 R2, and SQL Server 2012



Contact Details

Product Experts



USA/Canada: +1(0)-800-814-0578
UK/Europe: +44 (0)-208-099-5403
Rest of the World: +91 (0)-991-004-9028



sales@leptide.com

Technical Gurus

USA/Canada: +1(0)-800-814-0578
UK/Europe: +44 (0)-208-099-5403
Rest of the World: +91 (0)-991-085-4291

support@leptide.com