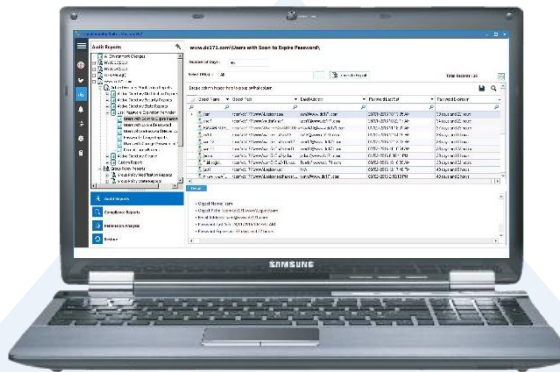


Lepide User Password Expiration Reminder



Our user password expiration reminder solution automatically reminds Active Directory users when their passwords are nearing expiry. It ultimately increases security, reduces helpdesk calls and leads to a better experience for both the IT team and the end user. This solution is either available standalone or as a part of our award winning LepideAuditor suite.



Password Reminders

- ✓ Completely manage password reminders with fully customisable emails
- ✓ Automate emails to be sent to users with step-by-step guides to password resets

Comprehensive Reports

- ✓ Easily find reports on soon to expire passwords, passwords due to expire, those due to change their passwords at next logon, logon failures, password changes and much more
- ✓ Quickly set up scheduled reports to be delivered via email

Intuitive Console

- ✓ Effortlessly keep track of your Active Directory users with a complete overview of password status
- ✓ Easily see expired passwords, soon to expire passwords across single or multiple domains as needed

Awards



Basic System Requirements

- Dual Core Processor or higher
- Recommend RAM - 8 GB
- Required free disk space:
 - Minimum 1 GB
 - Recommended 2 GB
- Any of the following 32 bit or 64 bit Windows Operating Systems:
 - Windows 7 / Windows 8.1 / 8 / 10 / Windows Server 2003 / Windows Server 2003 R2 / Windows Server 2008 / Windows Server 2008 R2 / Windows Server 2012 / Windows Server 2012 R2
- .NET Framework 4.0 or later
- Exchange Server Versions:
 - Exchange Server 2003 / Exchange Server 2007 / Exchange Server 2010 / Exchange Server 2013



Contact Details

Product Experts



USA/Canada: +1(0)-800-814-0578
UK/Europe: +44 (0)-208-099-5403
Rest of the World: +91 (0)-991-004-9028



sales@lepide.com

Technical Gurus

USA/Canada: +1(0)-800-814-0578
UK/Europe: +44 (0)-208-099-5403
Rest of the World: +91 (0)-991-085-4291

support@lepide.com