

LepideAuditor Suite

Instructions to Upgrade to
Version 16.4.2

Contents

1. Introduction.....	3
1.1 Steps for Auditing Domain	3
1.2 Steps for Auditing File Server.....	3
1.3 Steps for Auditing SharePoint Server	3
1.4 Steps for Auditing SQL Server	3
2. Uninstall Agent for File Server.....	3
3. Uninstall Agent for SharePoint Server	4
4. Uninstall Old Version of Software	5
5. Install New Version of Software.....	6
6. Install Agent of File Server.....	6
7. Install Agent for SharePoint Server.....	7
8. Steps for SQL Server	8
9. License Activation	12
10. Support	12

1. Introduction

This document is for those users who are already using LepideAuditor Suite and now want to upgrade to the latest 16.4.2 version.

1.1 Steps for Auditing Domain

If you are upgrading LepideAuditor Suite from 16.4 to 16.4.2, you have to uninstall the auditing agents, uninstall the old version of solution, install new version, and then install the agents.

If you are upgrading LepideAuditor Suite from 16.4.1 to 16.4.2, you just have to uninstall the old version of solution and install new version.

1.2 Steps for Auditing File Server

If you are upgrading LepideAuditor Suite from 16.4 to 16.4.2, you just have to uninstall the old version of solution and install new version.

If you are upgrading LepideAuditor Suite from 16.4.1 to 16.4.2, you have to uninstall the agent, uninstall the old version, install the new one, and install the agent.

1.3 Steps for Auditing SharePoint Server

If you are upgrading LepideAuditor Suite from 16.4 or 16.4.1 to 16.4.2, you have to uninstall the agent, uninstall the old version, install the new one, and install the agent.

1.4 Steps for Auditing SQL Server

If you are upgrading LepideAuditor Suite from 16.4 or 16.4.1 to 16.4.2, you have to uninstall the old version, install new version, and perform some steps mentioned in this document.

NOTE: It is recommend that you should not remove the installation folder while upgrading it to the new version.

2. Uninstall Agent for File Server

Before upgrading the software, it is required to uninstall auditing agents from all added File Servers.

NOTE: The auditing of File Server will be stopped when you uninstall its agent. The auditing can be started again after upgrading the software and installing the agent for that file server.

Perform the following steps to uninstall the auditing agent from a File Server.

1. Click "Uninstall Agent" option to access its wizard.

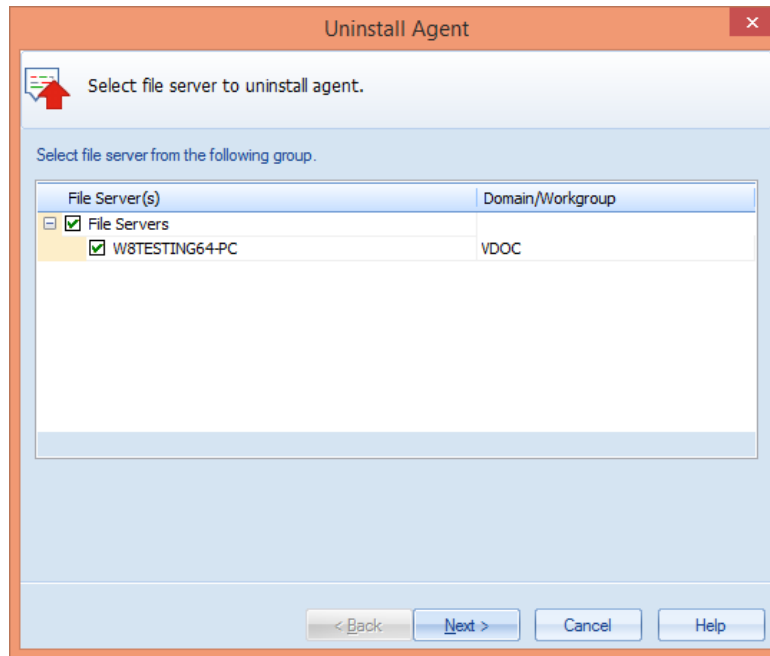


Figure 1: Uninstall Agent Wizard for File Server

2. Select the file servers from which you want to uninstall the agents.
3. Click "Next." The next page asks for the login credentials of an administrator.
4. Enter the login credentials of an administrator in the format – Domain\Username.
5. Click Next. The software uninstalls the agent from the selected File Server.
6. Once the agent is uninstalled, the message appears in the wizard.
7. Click "Finish" to close the wizard.

3. Uninstall Agent for SharePoint Server

Before upgrading the software, it is required to uninstall auditing agents from all added SharePoint Servers.

NOTE: The auditing of SharePoint Server will be stopped when you uninstall its agent. The auditing can be started again after upgrading the software and installing the agent for that SharePoint Server.

Perform the following steps to uninstall the auditing agent from a SharePoint Server.

1. Right click on a SharePoint Server node and click "Uninstall Agent".

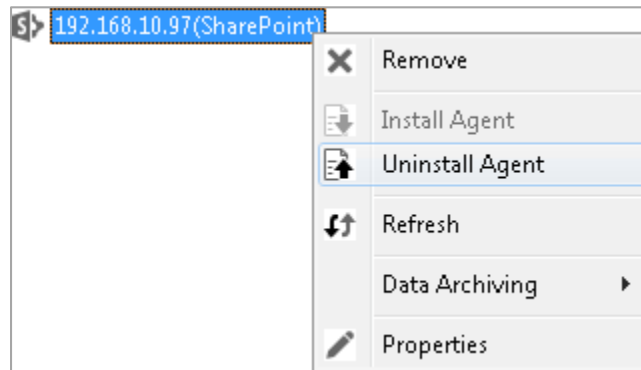


Figure 2: Selecting a SharePoint Server

You can also click "Uninstall Agent" link in "Actions" pane for the selected SharePoint.

2. It shows the following warning message.

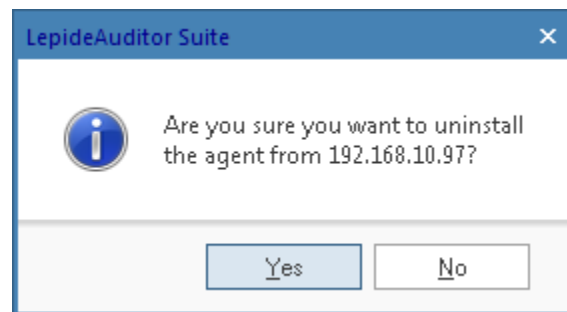


Figure 3: Warning to uninstall the agent

3. Click "Yes" to start the process of uninstalling the agent.

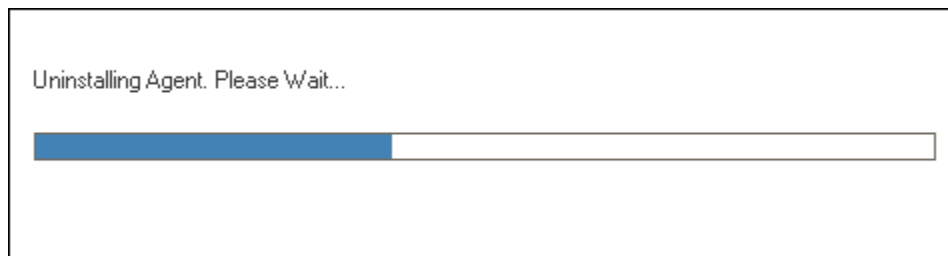


Figure 4: Uninstalling the SharePoint Agent

4. With the completion of the process, the agent is uninstalled from SharePoint Server.

4. Uninstall Old Version of Software

Please make sure to close the software before uninstalling it. Please go to Control Panel → "Programs" or "Programs and Features", select the solution, and click "Uninstall" to uninstall it.

Please do not remove the installation folder if you want the solution to retain the license file, auditing details of the server, data of backup snapshots, and other settings. The default installation folder is %ProgramFiles%\LepideAuditor Suite for 32-bit and %ProgramFiles(x86)%\LepideAuditor Suite for 64-bit Windows OS.

5. Install New Version of Software

You can download the setup file of the latest version from <https://www.lepide.com/lepideauditor/download.html>. Please make sure to view the updated system requirements mentioned at the same page. Please note that the software now does not support the domain auditing of Windows Server 2003 and Windows Server 2003 R2.

Extract the downloaded file and run “setup.exe” to access the installation wizard. Follow the onscreen instructions to install the solution. Once installed, you have to configure the service credentials to run “LepideAuditor Suite Service”.

6. Install Agent of File Server

As recommended above, you have already uninstalled agents for File Servers. Therefore, it is now required to reinstall auditing agents for all file servers. Perform the following steps to install an auditing agent for an already added File Server.

1. Click “Install Agent” option to access its wizard.

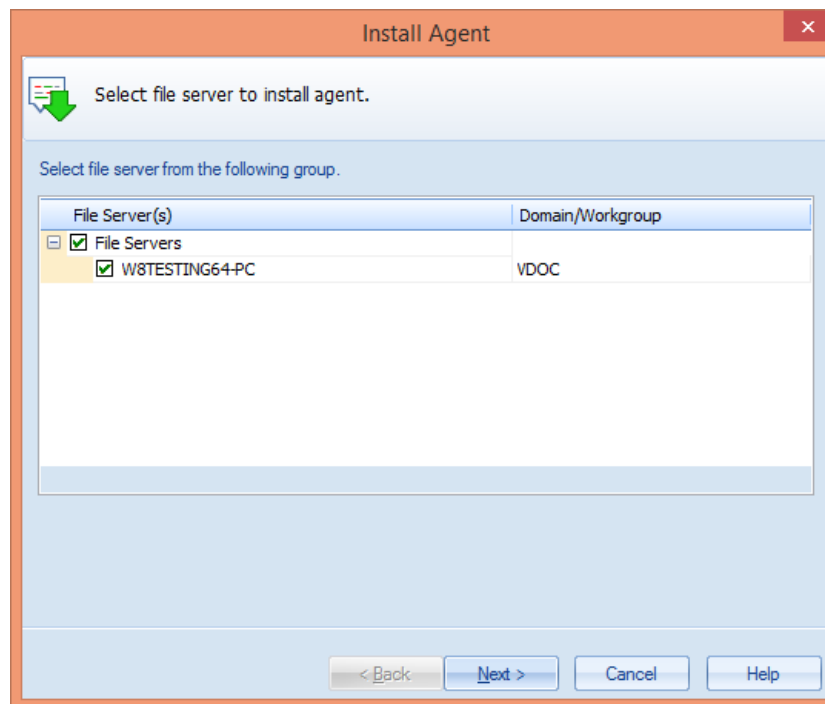


Figure 5: Install Agent wizard

2. Select the file servers on which you wish to install the agents.

3. Click "Next" to proceed. The next page displays the login credentials that you have entered earlier.
4. You can change the username and password in case file server access details have changed. It is required to enter the login credentials of an administrator in the format – Domain\Username.
5. Click Next to proceed.
6. The software installs agents on the selected File Servers. Once installed, the successful message appears in the wizard.
7. Click "Finish" to close the wizard.

7. Install Agent for SharePoint Server

As recommended above, you have already uninstalled agents for SharePoint Servers. Therefore, it is now required to reinstall auditing agents for all SharePoint Servers. Perform the following steps to install an auditing agent for an already added SharePoint Server.

1. Right click on SharePoint Server node under Component Management and click "Properties".

The screenshot shows a 'Properties' dialog box titled 'Modify SharePoint Server and its connected SQL Server for auditing'. The dialog is split into two main sections: 'SharePoint Details' and 'SQL Server Details'.
In the 'SharePoint Details' section, the following fields are visible:
- Central Administration URL: http://ntmachine-45:74868/default.aspx
- IP Address: 192.168.10.97
- User Name: Administrator
- Password: masked with asterisks
In the 'SQL Server Details' section, the following fields are visible:
- SQL Server Name: LOCAL_COD (with a browse button ...)
- Authentication Type: SQL Authentication (selected with a radio button)
- Under SQL Authentication:
- User Name: sa
- Password: masked with asterisks
A 'Test Connection' button is located at the bottom right of the 'SQL Server Details' section.
At the bottom of the dialog are 'OK' and 'Cancel' buttons.
On the left side of the dialog, there is a tree view with the following items:
- SharePoint Server Settings
- Site Collection Settings
- Database Settings
- Archive Database Settings

Figure 6: Wizard to modify the server

You can also click "Properties" link in "Actions" pane for the selected SharePoint.

2. Click "OK". It starts installing the agent.

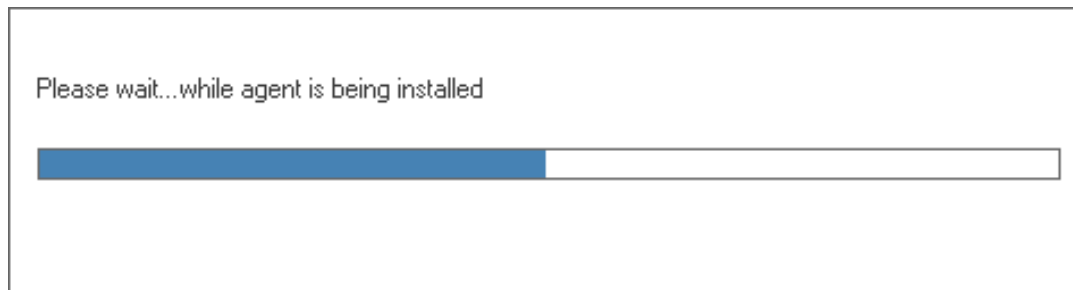


Figure 7: Reinstalling the agent on the SharePoint Server

8. Steps for SQL Server

The auditing of SQL Server is completely agentless in the latest version 16.4.2 of LepideAuditor Suite. When you have installed the latest version 16.4.2 of LepideAuditor Suite, the auditing of SQL Server will be stopped temporarily and the software automatically removes the SQL Server auditing agent, if installed on SQL Server, in the background.

You have to perform the following steps to start the auditing of SQL Server.

1. **Start Auditing:** Perform the following steps to start the auditing temporarily.
 - A. Go to "Settings" Tab → "Component Management" and select the node of SQL Server.

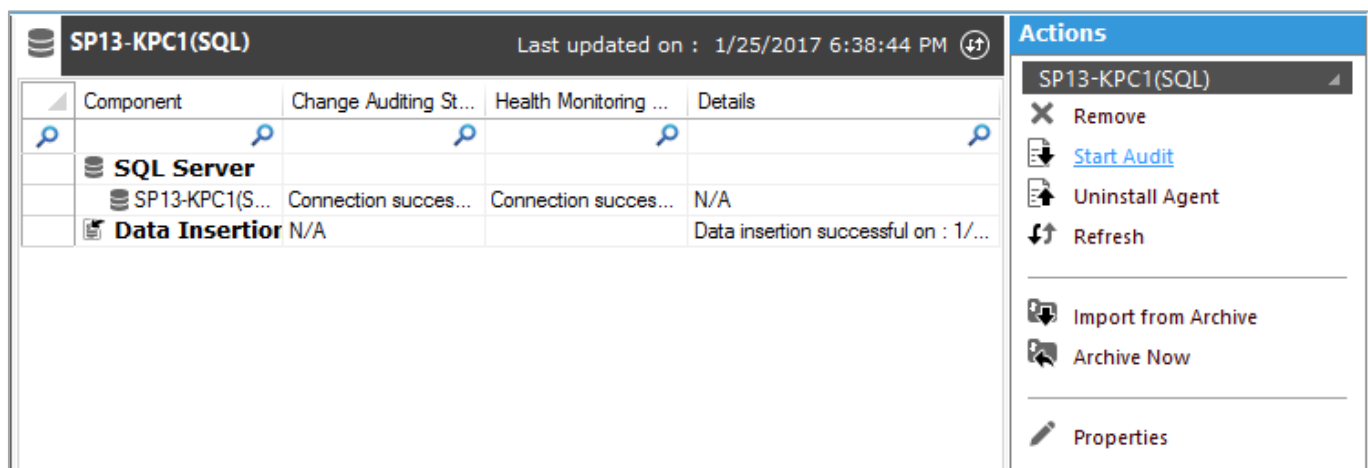


Figure 8: Option to start the auditing

- B. Click "Start Audit" link in "Actions" pane.

The auditing of SQL Server will be started temporarily. However, it will be stopped automatically within two minutes for further user inputs.

2. **Stop Auditing:** If the auditing does not stop automatically or if you want to do it manually, it is suggested to click "Stop Audit" link to stop the auditing. The following message box appears on the screen asking for the confirmation.

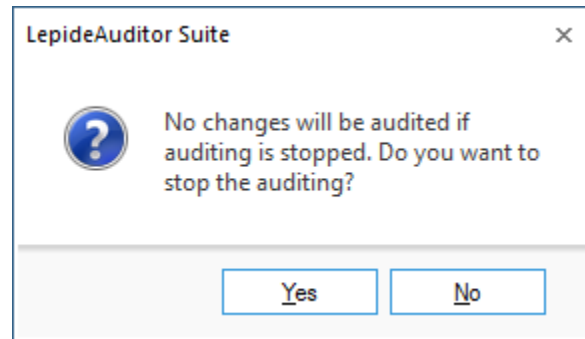


Figure 9: Confirming the action to stop the auditing

3. **Start Auditing:** Once auditing was stopped successfully, you can click "Start Audit" link again. This restart of auditing lets the software to remove any traces of the old auditing method.

However, if the auditing does not start again then it means some traces or the auditing agent is still on the SQL Server and it has to be removed. Perform the following steps.

1. Right click on "SQL Server" node under "Component Management" in the left panel and select "Uninstall Agent" option. You can also click "Uninstall Agent" link in "Actions" pane on the selected SQL Server.
2. It launches "Uninstall Agent" wizard.

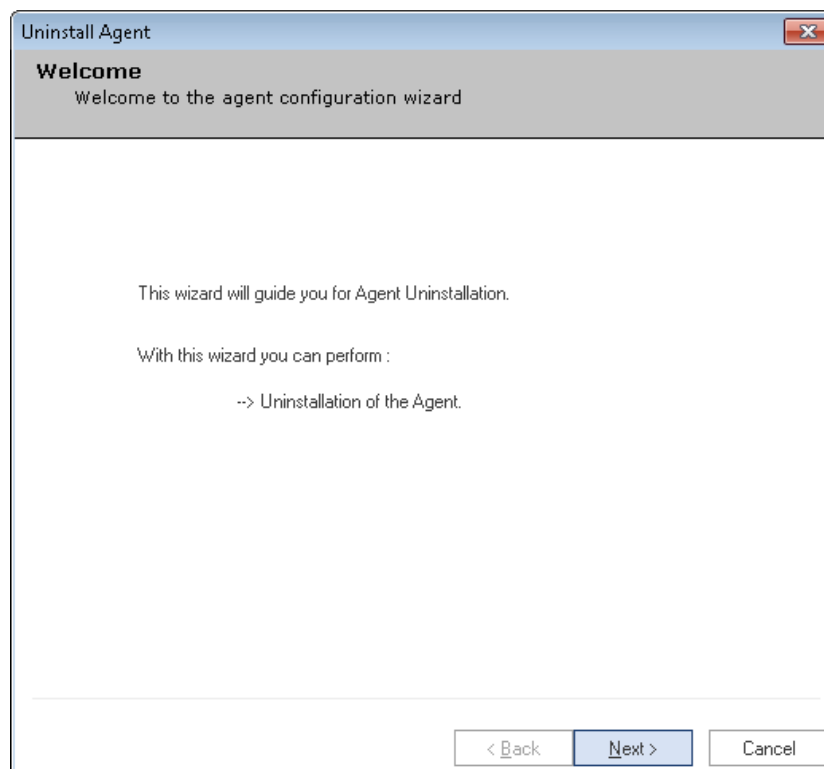
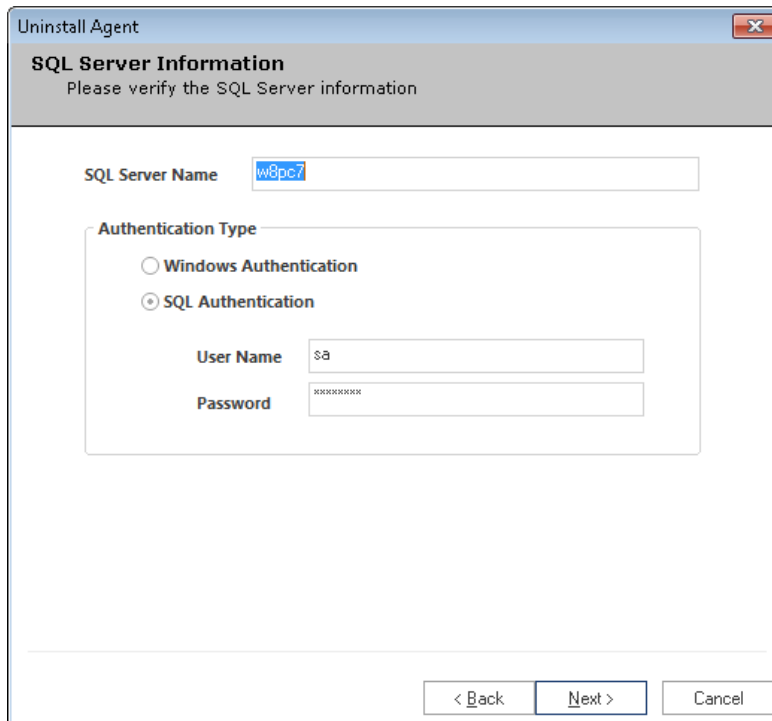


Figure 10: "Uninstall Agent" wizard

3. Click "Next" to proceed.
4. The next step shows the details of SQL Server from which you selected to uninstall the agent. Kindly do not modify the existing details.



Uninstall Agent

SQL Server Information
Please verify the SQL Server information

SQL Server Name: w8pc7

Authentication Type

Windows Authentication

SQL Authentication

User Name: sa

Password: XXXXXXXX

< Back Next > Cancel

Figure 11: Verify the details

5. Click on "Next" to proceed.
6. On the below screen, a summary of the entire process is displayed.

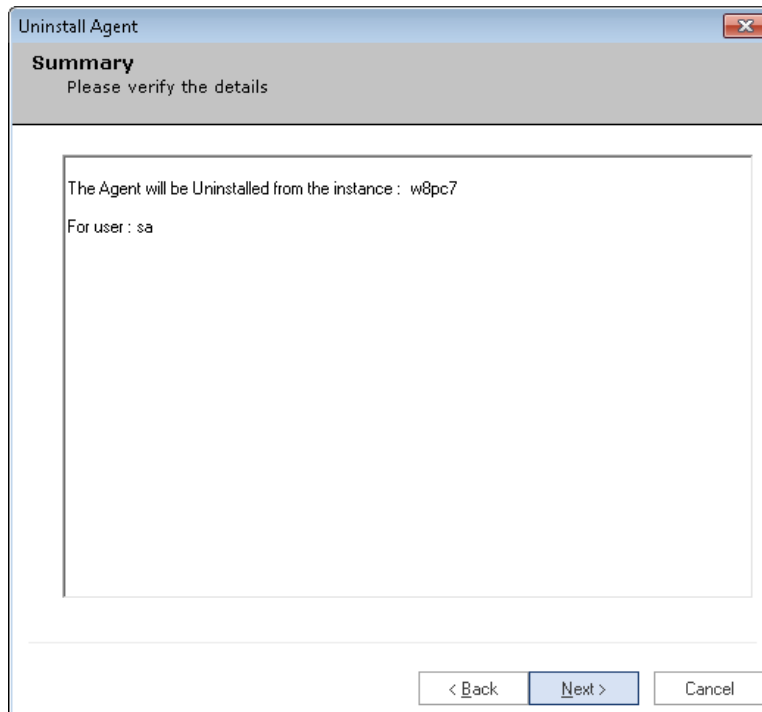


Figure 12: Summary of the Process

7. Click Next to process the agent uninstallation.
8. After completion of the process, "Finish" button is enabled.

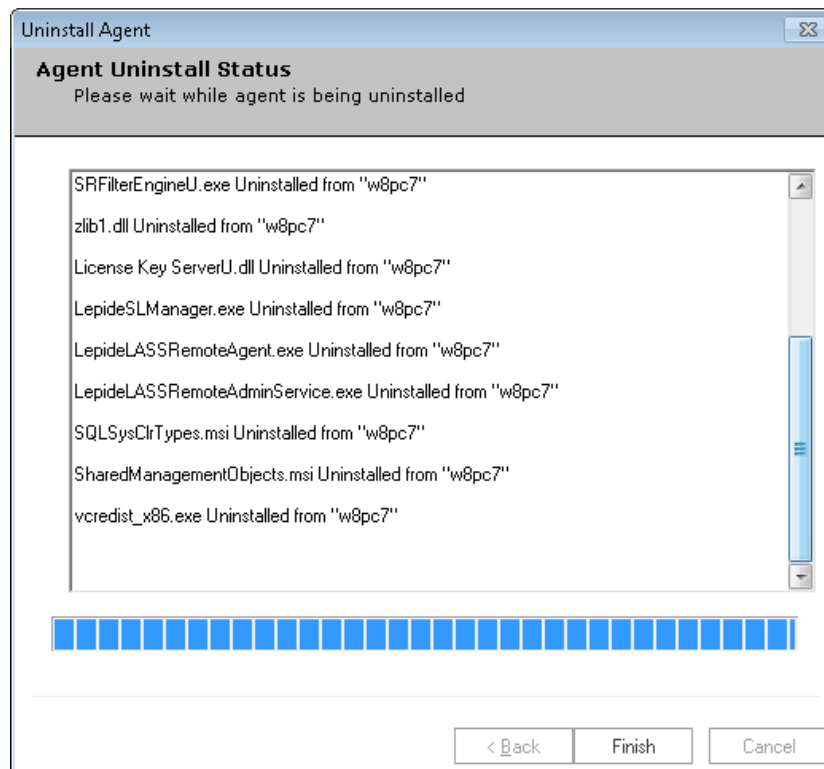


Figure 13: Uninstallation Complete

9. Click "Finish" to complete the process.

9. License Activation

If you have not removed the installation folder and if you are adding the same domain and file server added earlier, there is no need to perform additional steps for license activation. This is because the software has already retained the license files in the installation folders for the previously added server components.

If you are facing some issue in activating the license, follow the steps given below to activate the license.

1. Launch software.
2. Go to License Information Tab.
3. Select the components for which license has to be generated.
4. Click on 'Request License'.
5. This will generate a text file on the desktop. Email that file to sales@lepide.com to get the activation key.
6. Launch the application. Go to License Information Tab and select 'Activate License' to generate license for the components that have to be audited.

NOTE: If the license of the older version has not expired and you are installing the new version at the same path/directory then there is no need to regenerate the license.

10. Support

If you are facing any issue while installing, configuring or using the solution, then you can connect with our team.

Product experts

USA/Canada: +1-800-814-0578

UK/Europe: +44 (0) -845-594-3766

Rest of the World: +91 (0) -991-004-9028

Technical gurus

USA/Canada: +1-800-814-0578

UK/Europe: +44(0)-800-088-5478

Rest of the World: +91(0)-991-085-4291

You can also visit <http://www.lepide.com/contactus.html> to chat live with our team and to know more about our support team.

You can email your queries at the following addresses.

sales@Lepide.com for Sales

support@Lepide.com for Support