

How to install the Lepide Data Security Platform.

configuration guide.

Contents

1	Introduction	2
2	Installing the Lepide Data Security Platform.....	2
2.1	Requirements and Prerequisites	2
2.1.1	System Requirements	2
2.1.2	Supported Servers for Auditing Active Directory and Group Policy	3
2.1.3	Prerequisites for Health Monitoring.....	3
2.1.4	Prerequisites for the Web Console.....	3
2.2	How to Install the Lepide Data Security Platform	4
2.2.1	SQL Server Settings	11
2.2.2	Configure the Web Console	11
2.2.3	Add Group Policy Management.....	12
2.3	How to Install the Lepide Web Console	13
2.4	Creating the Web Console Admin User	17
3	Support.....	19
4	Trademarks	19



1 Introduction

The Lepide Data Security Platform provides a comprehensive way to provide visibility across Active Directory, Group Policy, Exchange on-premises, M365, SharePoint, SQL Server, Windows File Server, NetApp Filer, Dell EMC Isilon, Nasuni, Nutanix and every platform which can provide an integration with Syslogs and RestAPI.

This guide takes you through the requirements and pre-requisites for installing the Lepide Solution and then the installation process itself. Section 3 then explains the pre-requisites and installation process for the Lepide Web Console. Section 4 provides links to User Guides which explain how to add the different components and Section 5 explains how to configure the Lepide Solution for Least Privilege.

If you have any questions at any point in the process, you can contact our Support Team. The contact details are listed at the end of this document.

2 Installing the Lepide Data Security Platform

2.1 Requirements and Prerequisites

Before you start installing the Lepide Data Security Platform, you need to ensure that your computer meets the following requirements:

2.1.1 System Requirements

- Required Processor
 - Minimum quad-core processor and recommended 8 core
 - Recommended quad-core processor
- Required RAM
 - Minimum RAM 16 GB
 - Recommended RAM 32 GB
- Required free disk space
 - Minimum 2 GB
 - Recommended 4 GB
- Network Bandwidth Recommendations:
 - We recommend the use of Giga switches and a Giga Lan adapter on your local network (on-premise) and you should have a Giga network plan supported on Azure as well. The internet speed is also recommended to be in Giga (the more the better).
 - The network speed between on-premise machines and Azure virtual machines should be similar to what we normally have when transferring data between two machines within a local network.



- Any of the following 32 bit or 64 bit Windows Operating Systems:
 - Windows Server OS: 2016, 2019 and 2022 (latest)
- Any of the following SQL Servers (local or network hosted) for storing auditing logs:
 - Any SQL Server above and including SQL Server 2016 (standard or enterprise) as per current support from Microsoft
- .NET Framework 4.6.2 developer pack and above

2.1.2 Supported Servers for Auditing Active Directory and Group Policy

- Supported Versions: All Windows Servers above Windows Server 2016

2.1.3 Prerequisites for Health Monitoring

- WMI Services should be up and running.

2.1.4 Prerequisites for the Web Console

To work with the Lepide Web Console, you will need to have installed and configured the Lepide Data Security Platform and have appropriate rights to access Active Directory.

- PowerShell version 7.4 or above should be installed
- Supported Web Browsers:

The LDSP Web Console can run in any of the following web browsers:

- Google Chrome (latest publicly released version)
- Microsoft Edge (latest publicly released version)
- Mozilla Firefox (latest publicly released version)
- Safari (latest publicly released version)

NOTE: Internet Explorer is no longer supported

2.2 How to Install the Lepide Data Security Platform

- Run the setup file **setup_25_1.exe** from the LDSP Setup folder to start the installation

The User Account Control dialog box will be displayed:

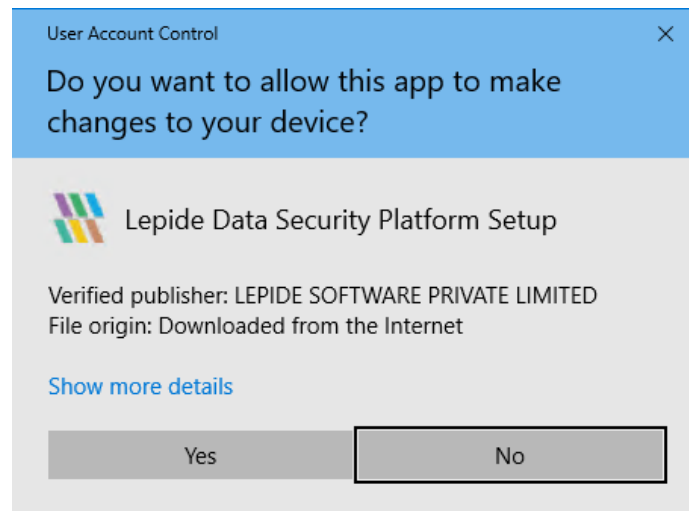


Figure 1: User Account Control

- Select **Yes** to proceed with the installation

The installation steps are listed below:

- From the Welcome Screen, click **Next** to install the Lepide Data Security Platform

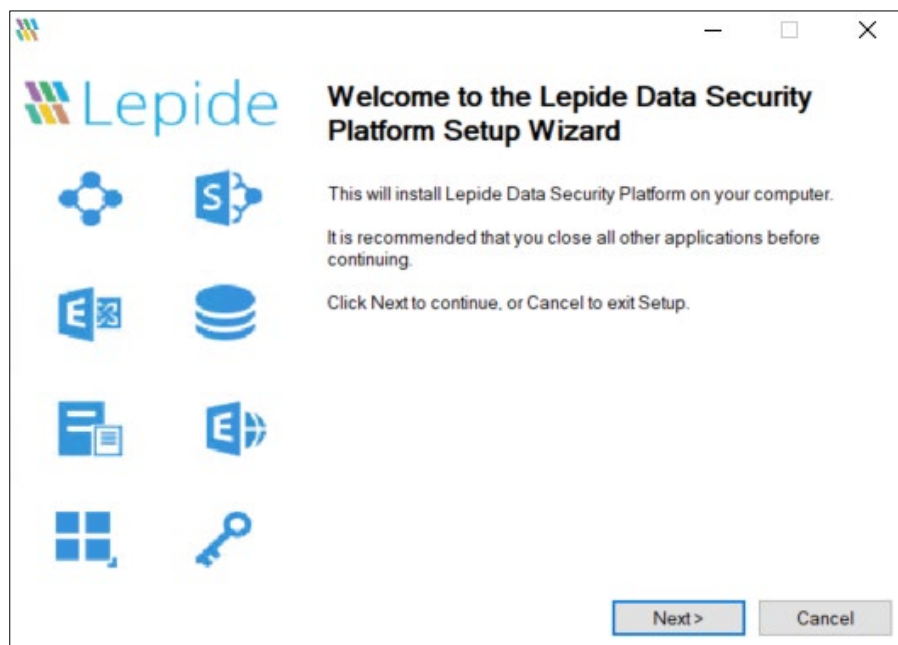


Figure 2: The Welcome Screen

- Choose **I accept the agreement** and click **Next**

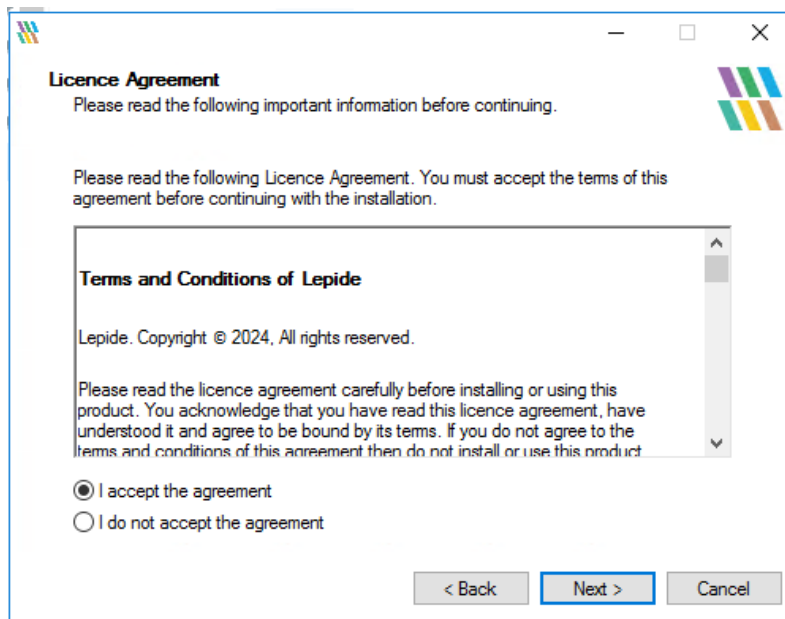


Figure 3: Accept the Licence Agreement

- Click **Next** to continue the installation into the suggested folder
- Click **Browse** and select the location path if you would like to select a different folder. Click **Next** to continue

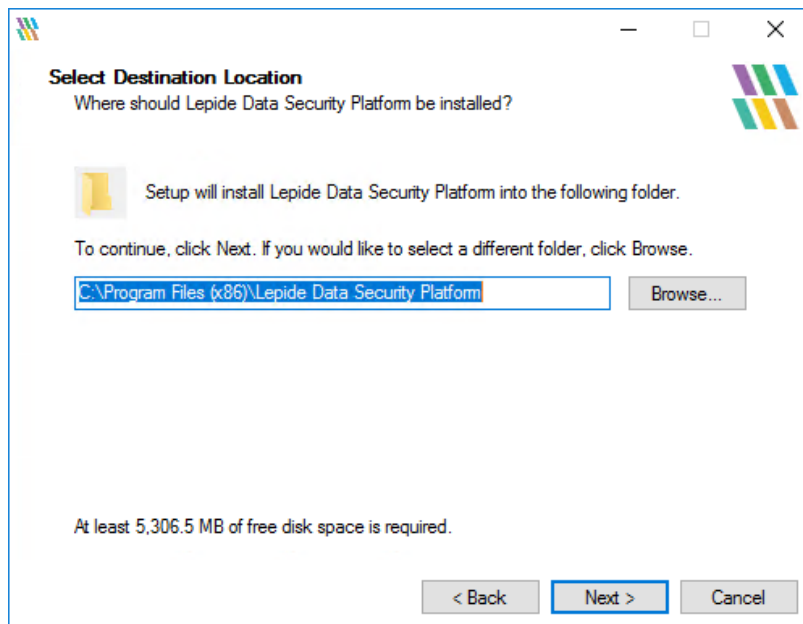


Figure 4: Select Destination Location

- If the Folder Already Exists it will ask for confirmation Click **Yes** to continue

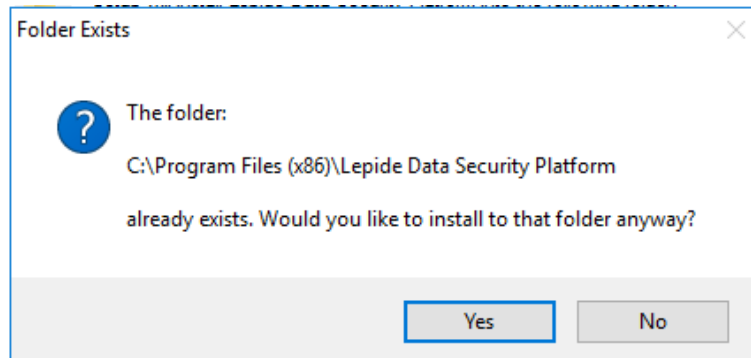


Figure 5: Confirmation Required if Folder Exists

Select Start Menu Folder:

- Click **Next** to continue with the suggested folder
- Click **Browse** and select the location path if you would like to select a different folder. Click **Next** to continue

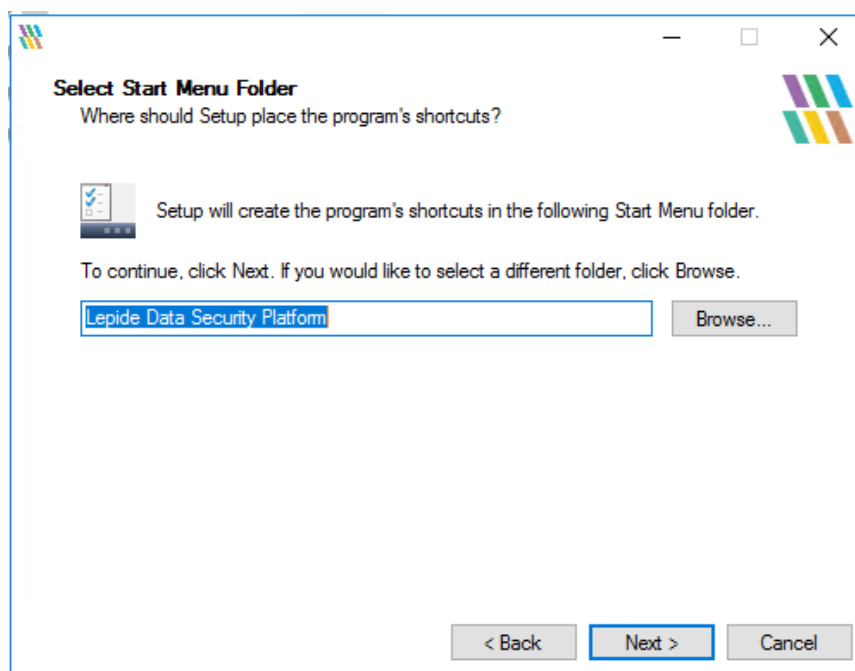


Figure 6: Select Start Menu Folder

Select Additional Tasks:

- Check the box to Create a desktop icon during installation if required
- Check the box to Create a Quick Launch icon during installation if required
- Click **Next** to continue

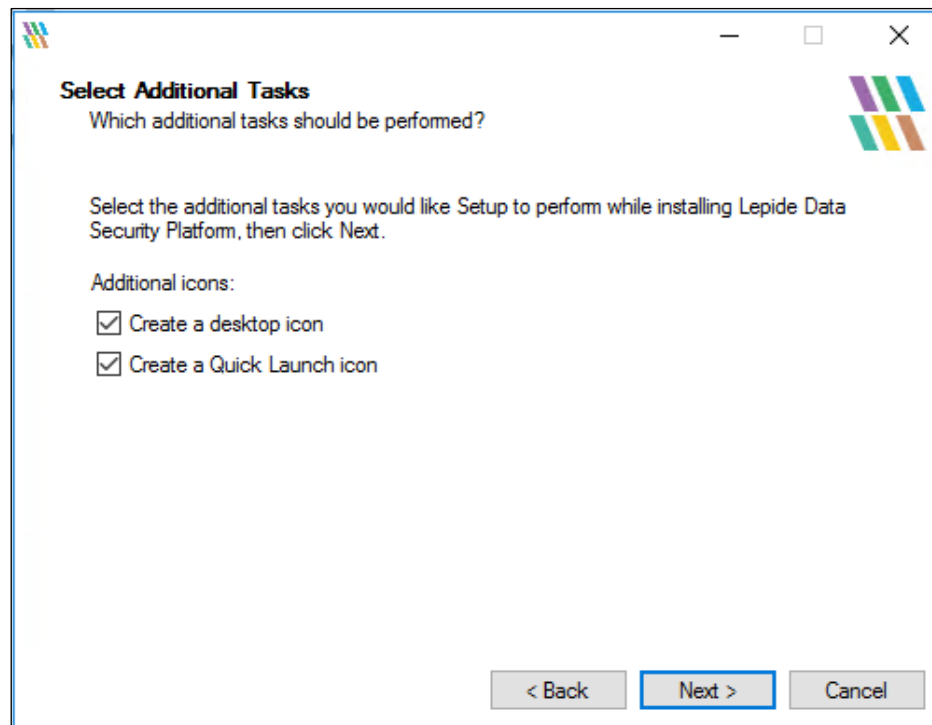


Figure 7: Select Additional Tasks

Ready to Install:

- Click **Install** to continue with installing the Solution or click **Back** to review or change your settings

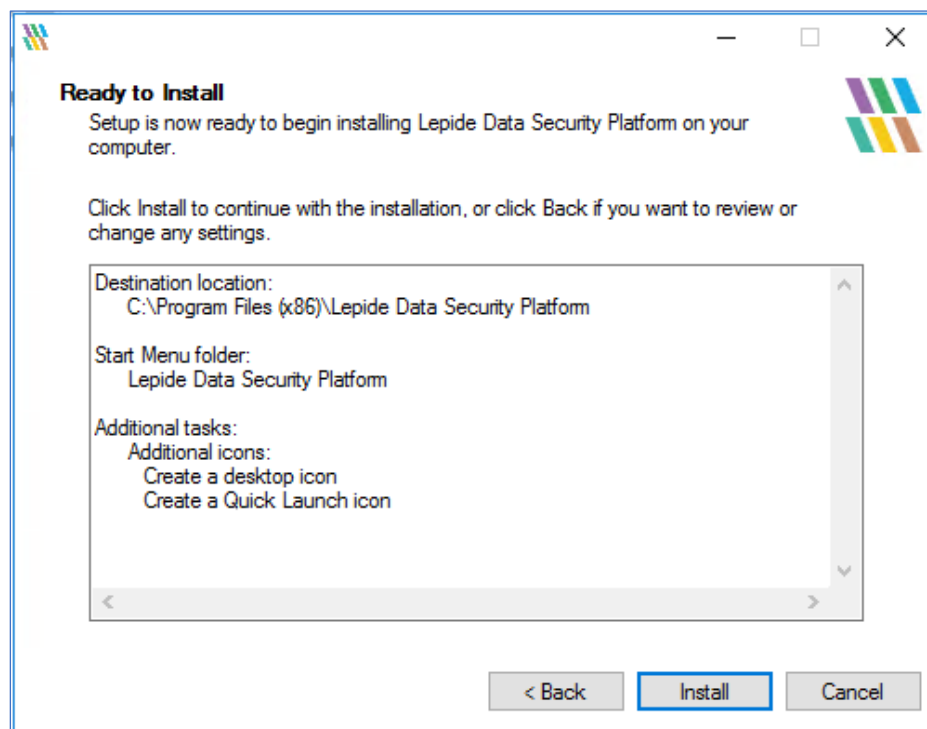


Figure 8: Ready to Install

- Installation will start. Wait until the installation Process is complete

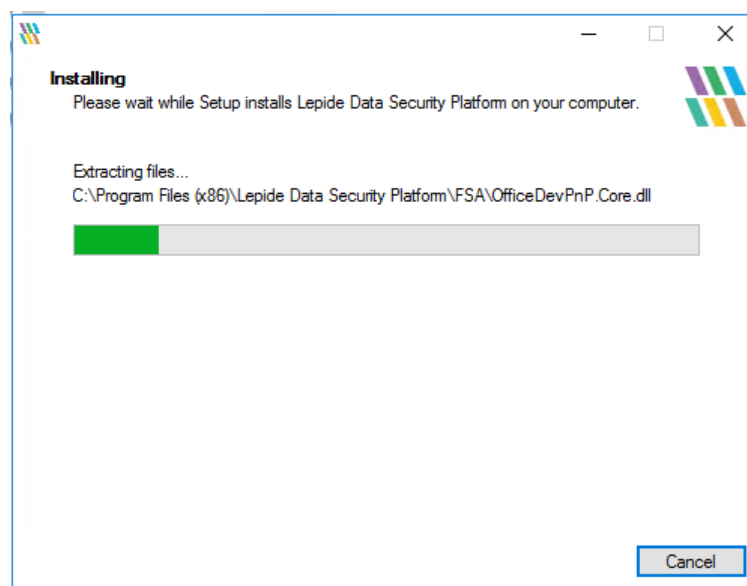


Figure 9: Installation

- When the installation process is complete, a message for successful installation appears in the wizard:

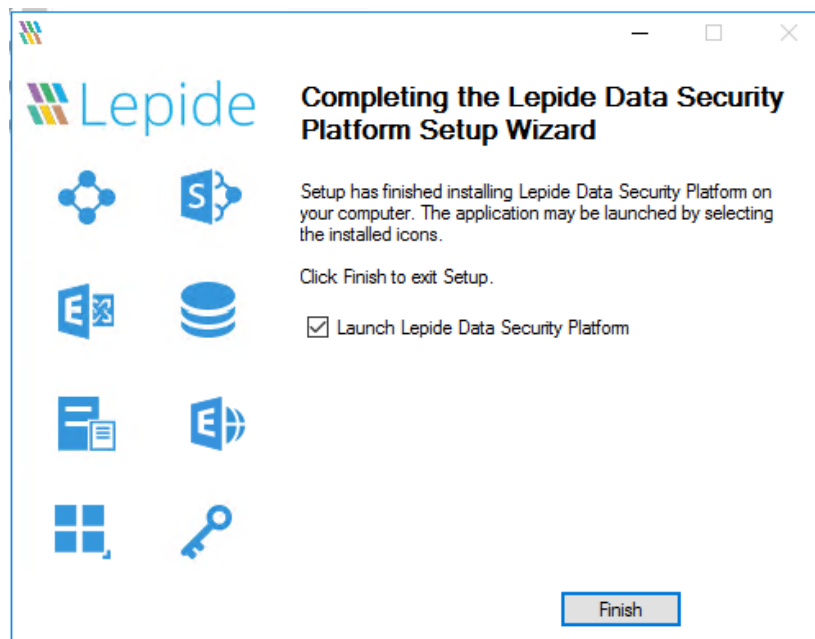


Figure 10: Installation Successful

- Click **Finish** to complete the process
- If you have checked the **Launch Lepide Data Security Platform** box, it will close the installation wizard and launch the Solution



Figure 11: Launch of the Lepide Data Security Platform

- The Welcome Screen appears once the solution is launched for the first time with the Credentials dialog box displayed:

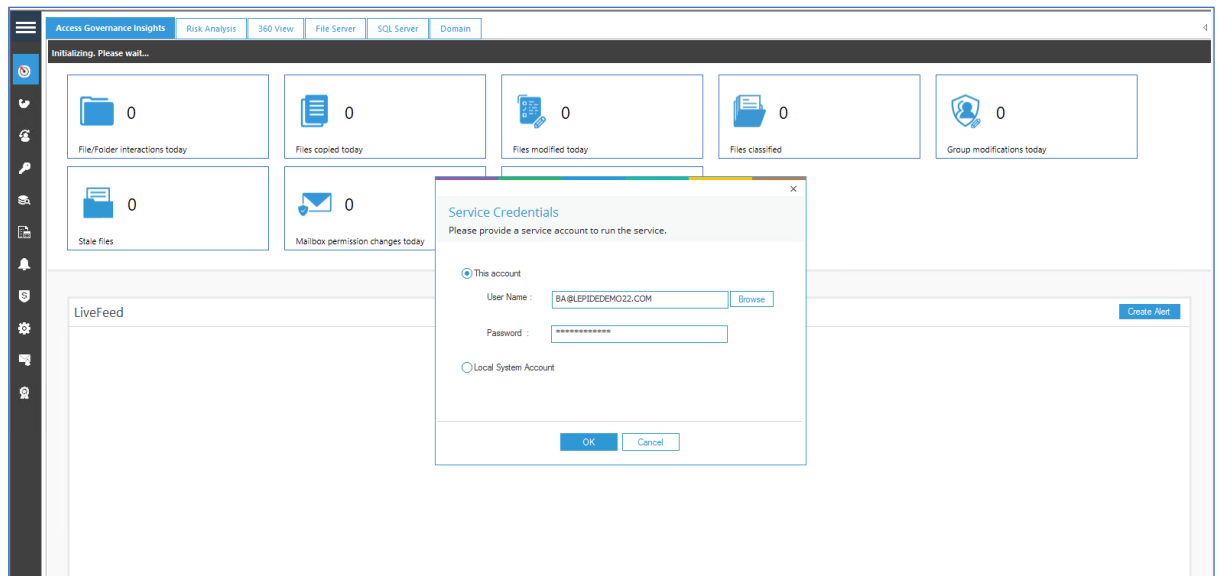


Figure 12: Service Credentials

- The Service Credentials need to be configured and this needs to be with an Administrator account. This setting only appears on the Welcome Screen when you are running the solution for the first time
- To select the User Name, click **Browse** and select the user account from your Active Directory
- Enter the Password and click **OK** to configure the Service Account
- A message will be displayed saying that service credentials have been updated successfully:

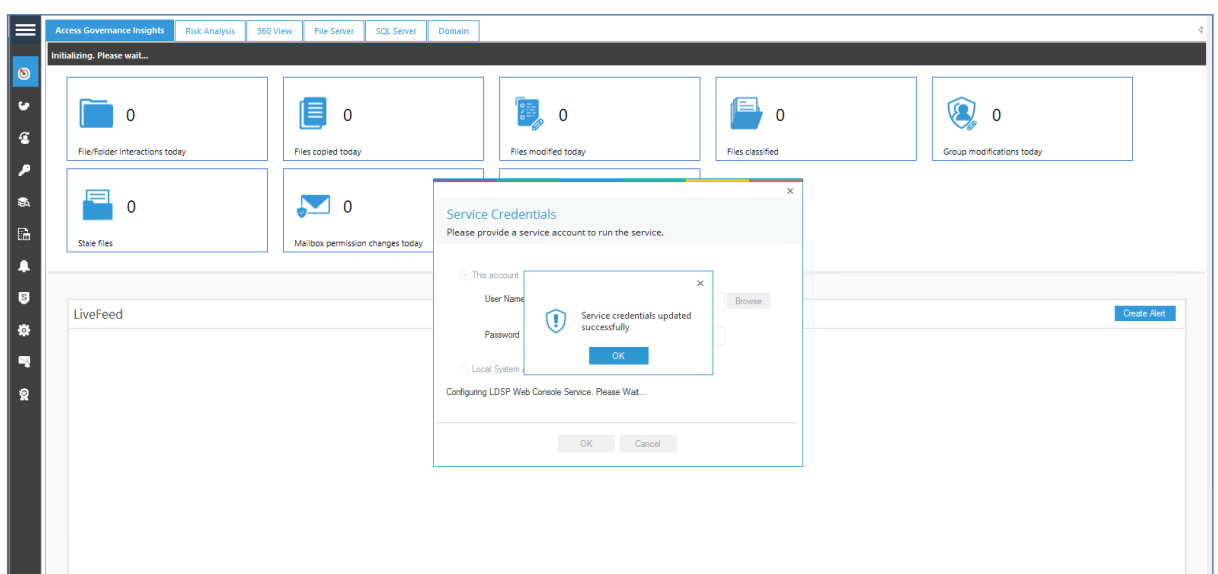


Figure 13: Successful Update of Service Credentials

- Click **OK**

2.2.1 SQL Server Settings

- From the settings options, select default SQL Server settings
- The Default SQL Server Settings window is displayed:

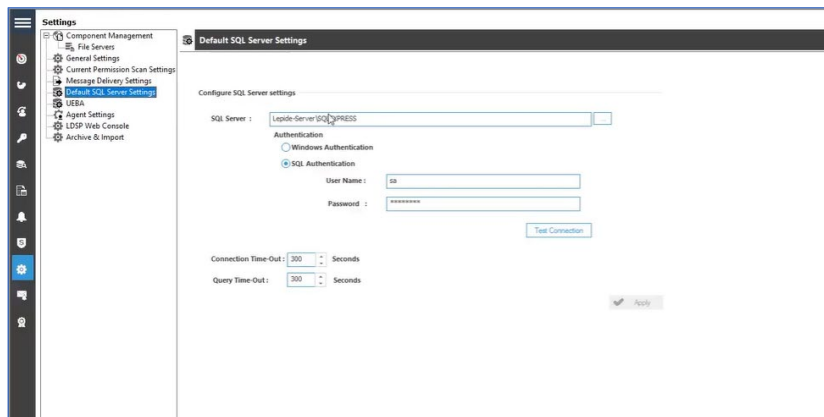


Figure 14: Default SQL Server Settings

Enter your SQL Server settings:

- SQL Authentication is the recommended option
- Add the User Name and Password and click **Test Connection**

2.2.2 Configure the Web Console

- From the settings options, select **LDSP Web Console**
- The LDSP Web Console window is displayed:

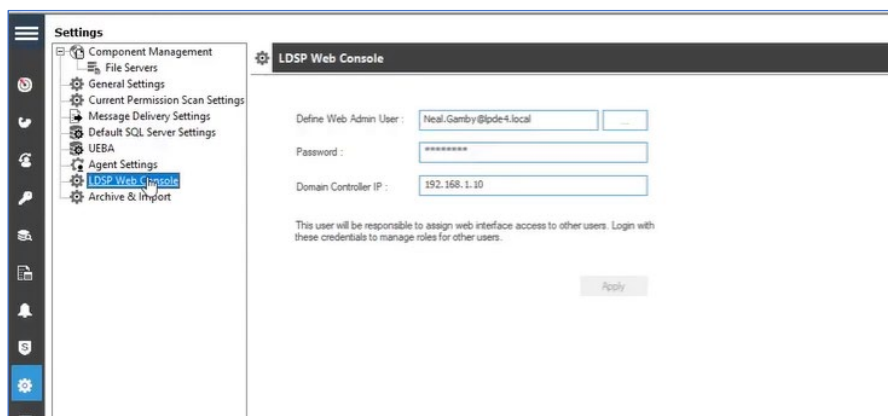


Figure 15: LDSP Web Console

- Add the **Web Admin User name, Password** and **Domain Controller IP**
- Click **Apply**
- Sign into the Lepide Web Console to check that the account has been configured correctly

2.2.3 Add Group Policy Management

If an Active Directory component is to be installed, you will need to add Group Policy Management to your server:

- From Server Manager select **Add roles and features**

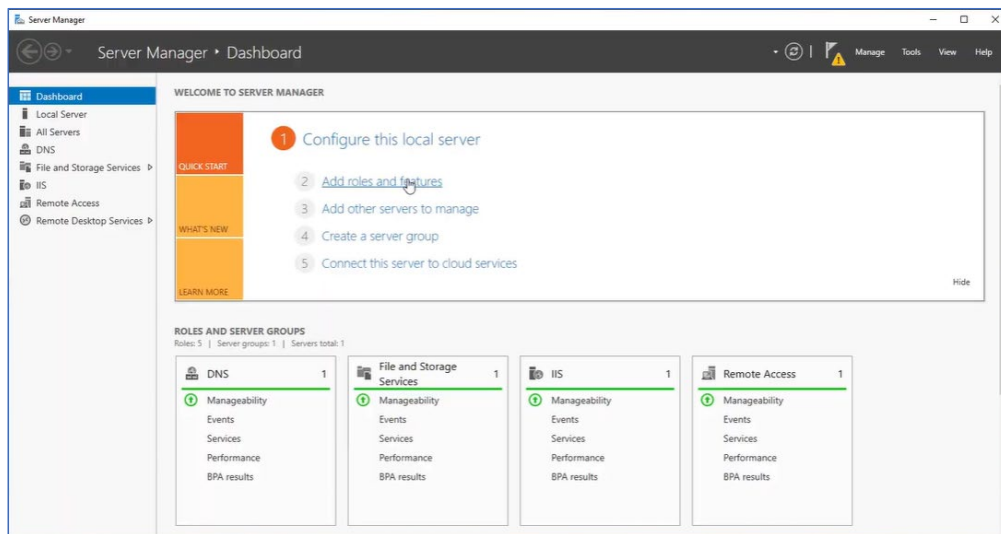


Figure 16: Server Manager

The Add Roles and Features Wizard is displayed:

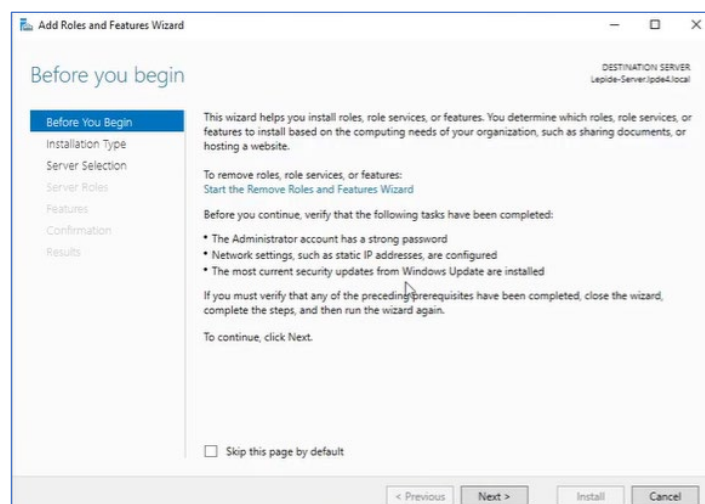


Figure 17: Add Roles and Features Wizard – Before you begin

- Click **Next** until you get to **Features**

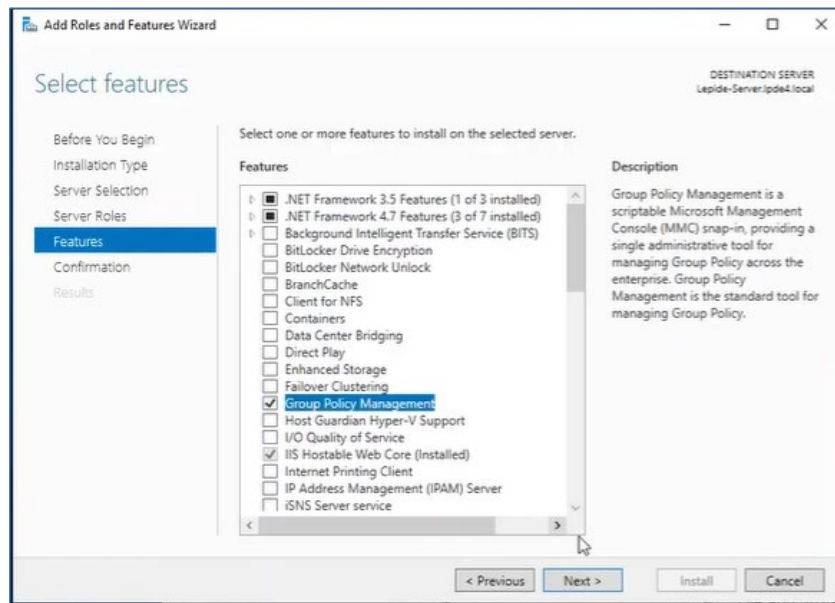


Figure 18: Add Roles and Features Wizard - Select Features

Select Group Policy Management

- Click **Next**
- Click **Install**
- Click **Close** when finished

2.3 How to Install the Lepide Web Console

- Open the Lepide DSP 24.4 folder to see the LDSP Web Console Application file:

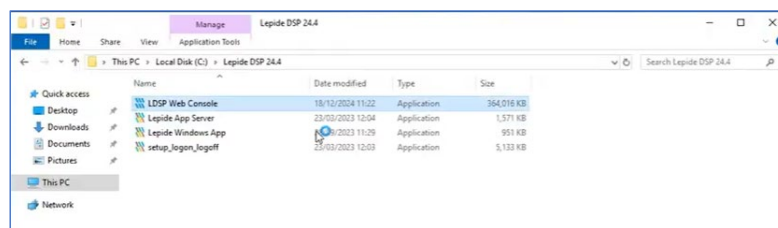


Figure 19: Web Console Exe File

- Right click the LDSP Web Console installation file and choose Run as administrator
- If you are installing the web console on a virtual appliance, the .exe file will be located on the C Drive of the virtual appliance.

Respond to the security warning if it appears:

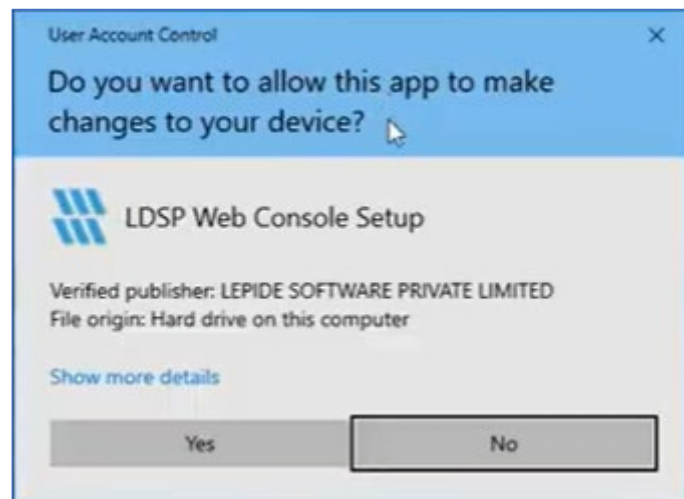


Figure 20: Security Warning

The LDSP Web Console Setup Wizard should automatically start. The first setup screen is shown below:

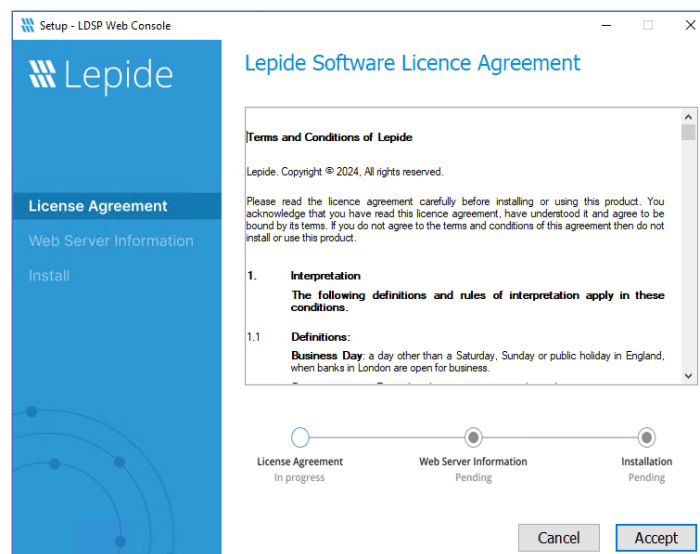


Figure 21: Accept License Agreement

- Click **Accept** to accept the License Agreement

The Web Server Information dialog box is displayed:

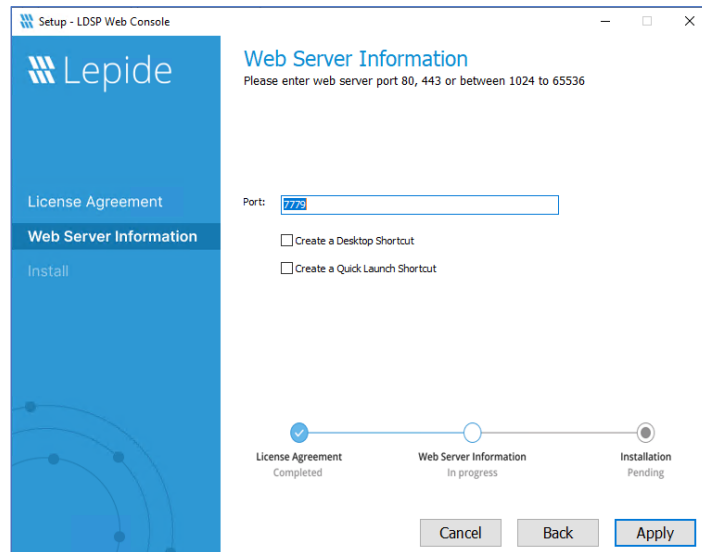


Figure 22: Web Server Information

- Add the web server port number. The port number 7779 is the default used by the Lepide Web Console, but you can use any free port you have available.
- Check the **Create a desktop shortcut** box if required
- Check the **Create a quick launch shortcut** box if required
- Click **Apply** to continue
- The Install dialog box is displayed:

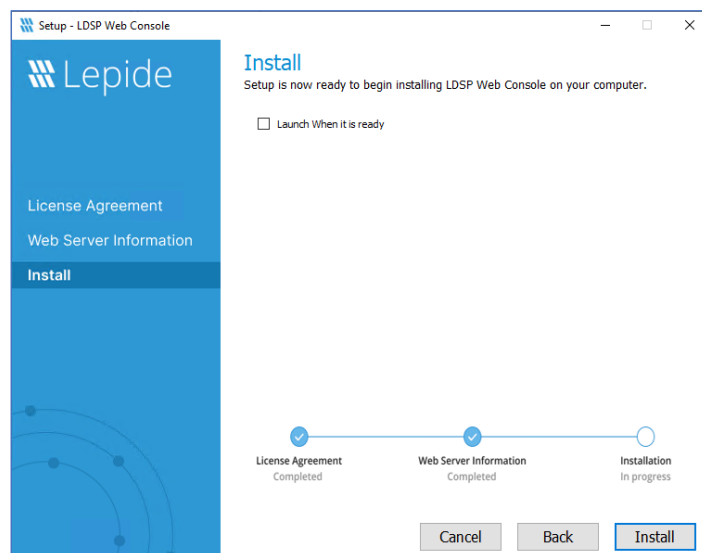


Figure 23: Install

- Check the **Launch when it is ready** box to start the Lepide Web Console once installation is complete
- Click **Install** to start the installation

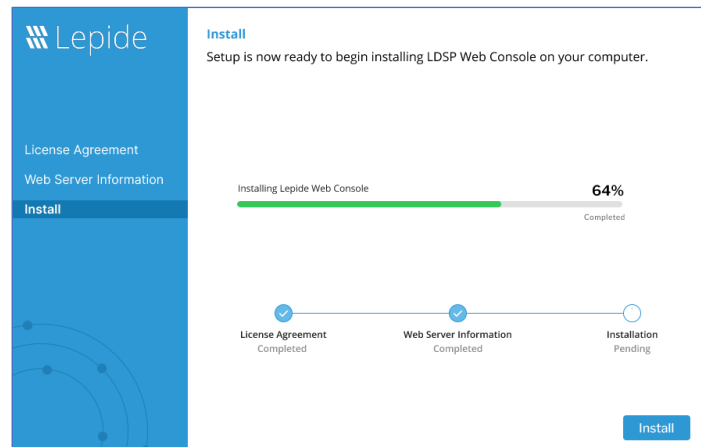


Figure 24: Installing the Lepide Web Console

- Click the **Finish** button to complete the installation

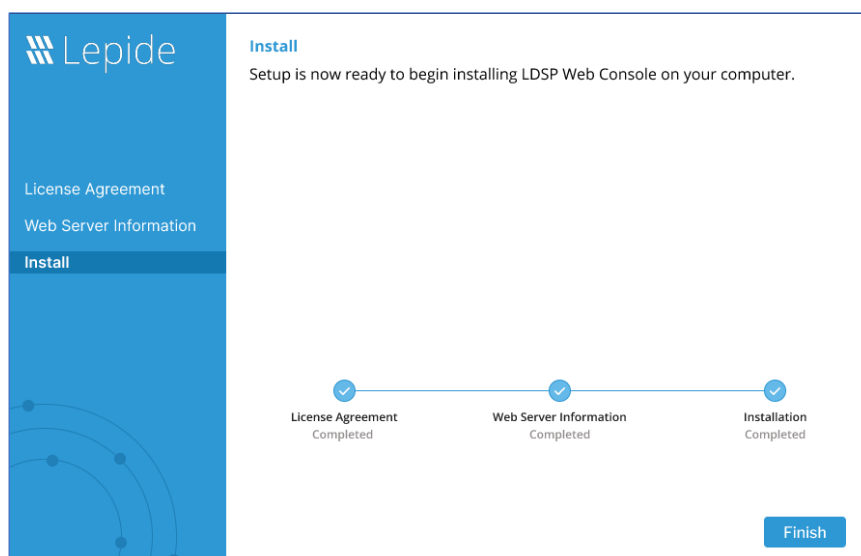



Figure 25: Complete the Installation

2.4 Creating the Web Console Admin User

To use the Web Console, the first thing you need to do is to specify a Web Console Admin User. Once this user has been set up, they can create all other Web Console users from within the Web Console interface.

From the Lepide Data Security Platform:

- Click the Settings icon 
- Select **LDSP Web Console** (last option on the tree structure)

The LDSP Web Console screen will be displayed:

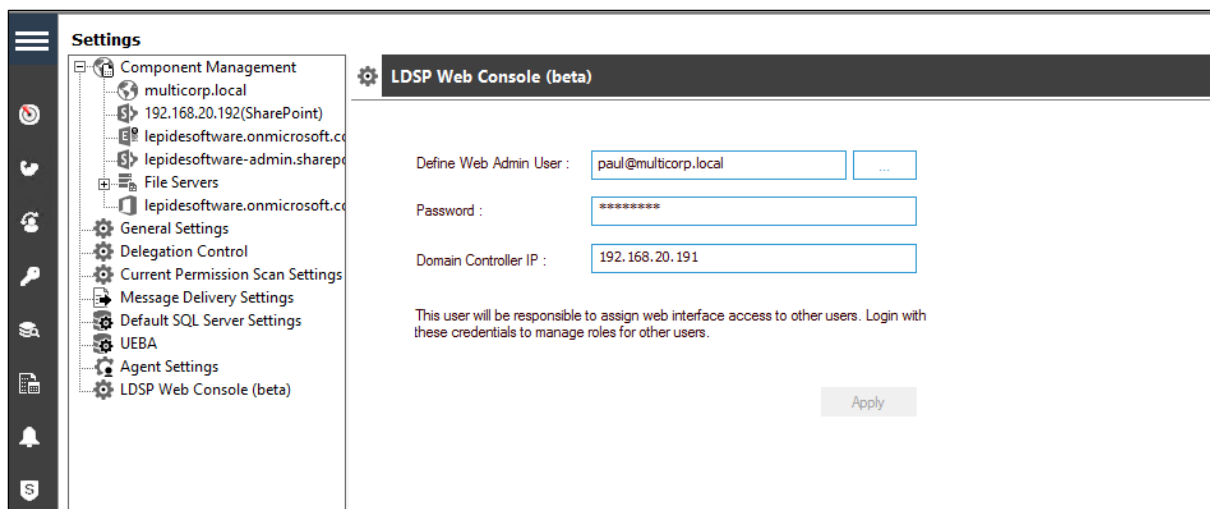



Figure 26: LDSP Web Console Admin User Setup

Enter the user logon details in the dialog box as follows:

- Enter the **Username** or click the  icon to select a username. It should be in the format **username@domain.com**
 - Enter the **Password** (this is the Active Directory logon password)
 - Enter the Domain Controller IP Address
- This user will be responsible for assigning web interface access to other users. Login with these credentials to manage roles for other users.
- Click **Apply**

- Login to the Web Console with this user. Please use the same format for the username ([Username@domain.com](#)). The Web Console Home Screen will be displayed:

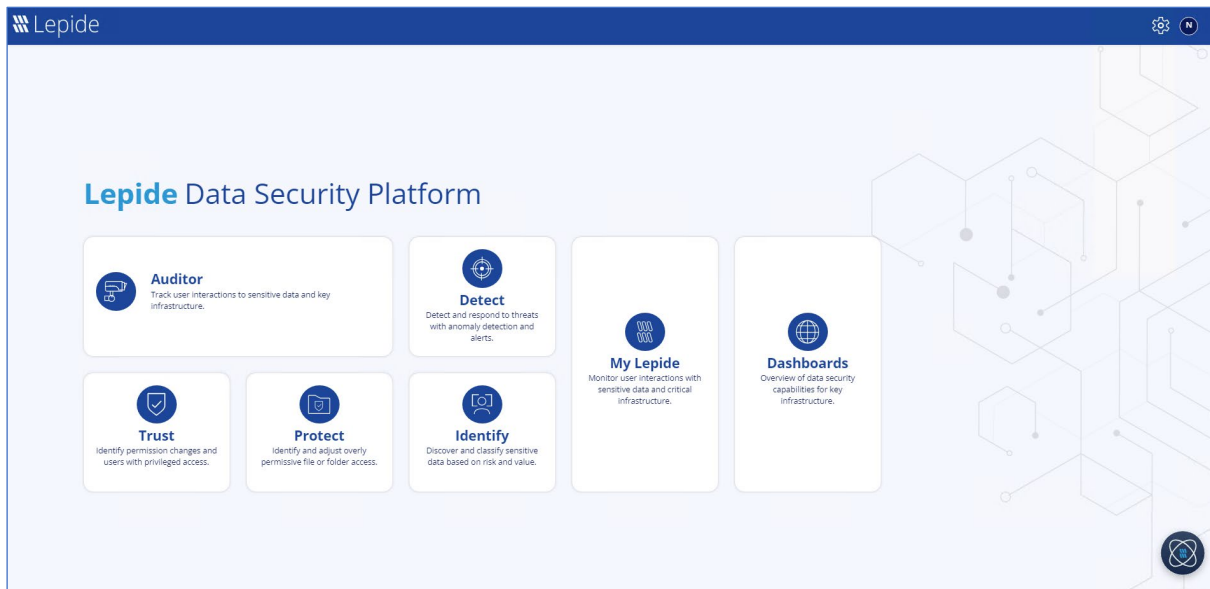


Figure 27: Web Console Home Screen

3 Support

If you are facing any issues whilst installing, configuring, or using the solution, you can connect with our team using the contact information below.

Product Experts

USA/Canada: +1(0)-800-814-0578

UK/Europe: +44 (0) -208-099-5403

Rest of the World: +91 (0) -991-004-9028

Technical Gurus

USA/Canada: +1(0)-800-814-0578

UK/Europe: +44 (0) -208-099-5403

Rest of the World: +91(0)-991-085-4291

Alternatively, visit <https://www.lepide.com/contactus.html> to chat live with our team. You can also email your queries to the following addresses:

sales@Lepide.com

support@Lepide.com

To read more about the solution, visit <https://www.lepide.com/data-security-platform/>.

4 Trademarks

Lepide Data Security Platform, Lepide Data Security Platform App, Lepide Data Security Platform App Server, Lepide Data Security Platform (Web Console), Lepide Data Security Platform Logon/Logoff Audit Module, Lepide Data Security Platform for Active Directory, Lepide Data Security Platform for Group Policy Object, Lepide Data Security Platform for Exchange Server, Lepide Data Security Platform for SQL Server, Lepide Data Security Platform SharePoint, Lepide Object Restore Wizard, Lepide Active Directory Cleaner, Lepide User Password Expiration Reminder, and LiveFeed are registered trademarks of Lepide Software Pvt Ltd.

All other brand names, product names, logos, registered marks, service marks and trademarks (except above of Lepide Software Pvt. Ltd.) appearing in this document are the sole property of their respective owners. These are purely used for informational purposes only.

Microsoft®, Active Directory®, Group Policy Object®, Exchange Server®, Exchange Online®, SharePoint®, and SQL Server® are either registered trademarks or trademarks of Microsoft Corporation in the United States and/or other countries.

NetApp® is a trademark of NetApp, Inc., registered in the U.S. and/or other countries.

