

Installation Guide



Lepide SQL Storage Manager

© Lepide Software Private Limited, All Rights Reserved

This User Guide and documentation is copyright of Lepide Software Private Limited, with all rights reserved under the copyright laws. This user guide cannot be reproduced in any form without the prior written permission of Lepide Software Private Limited. No Patent Liability is assumed, however, with respect to the use of the information contained herein.

Warranty Disclaimers and Liability Limitation

Lepide SQL Storage Manager, and any and all accompanying software, files, data and materials, are distributed and provided AS IS and with no warranties of any kind, whether expressed or implied. In particular, there is no warranty for any harm, destruction, impairment caused to the system where Lepide SQL Storage Manager is installed. You acknowledge that good data processing procedure dictates that any program, including Lepide SQL Storage Manager, must be thoroughly tested with non-critical data before there is any reliance on it, and you hereby assume the entire risk of all use of the copies of Lepide SQL Storage Manager covered by this License. This disclaimer of warranty constitutes an essential part of this License.

In addition, in no event does Lepide Software Private Limited authorize you or anyone else to use Lepide SQL Storage Manager in applications or systems where Lepide SQL Storage Manager failure to perform can reasonably be expected to result in a significant physical injury, or in loss of life. Any such use is entirely at your own risk, and you agree to hold Lepide Software Private Limited harmless from any and all claims or losses relating to such unauthorized use.

Trademarks

Lepide SQL Storage Manager is a copyright work of Lepide Software Private Limited. Windows 95®, Windows 98®, Windows ME®, Windows NT®, Windows 2000 Server®, Windows 2000 Advanced Server®, Windows 2003 Server®, Windows XP®, Windows Vista, Windows 7, and MS-DOS, are registered trademarks of Microsoft Corporation.

Contact Information

Email: sales@lepide.com

Website: <http://www.lepide.com>

Table of Contents

1. Introduction	4
1.1 Purpose of this Document	4
1.2 Point of Contact	4
2. System Requirements	4
2.1 Basic System Requirements	4
2.2 Supported Platforms	5
3. Installing Lepide SQL Storage Manager	5
4. Un-installing Lepide SQL Storage Manager.....	15
4.1: Un-installing Lepide SQL Storage Manager from Windows Start Menu	15
4.2: Un-installing Lepide SQL Storage Manager from Control Panel.....	16

1. Introduction

Welcome to the Installation Guide of Lepide SQL Storage Manager for managing SQL Storage. In this installation guide, we have covered installation of Lepide SQL Storage Manager. Apart from the installation of the software, the un-installation process of the software is also included in this Installation Guide.

1.1 Purpose of this Document

The purpose of this document is to guide you through the process of installation and un-installation of Lepide SQL Storage Manage Software.

1.2 Point of Contact

For software related queries, you can contact us at:

Helpline: +1-800-814-0578

Send Email for:

General Queries: contact@lepide.com

Sales: sales@lepide.com

Technical Support: support@lepide.com

2. System Requirements

Before you start installing the Lepide SQL Storage Manager, make sure that your computer meets the following requirements.

2.1 Basic System Requirements

- Microsoft .NET Framework 4
- SQL Server (located anywhere in the network)
- Pentium 4 or Higher Class Processor
- 1 GB RAM (2 GB recommended)
- 50 MB of Disk Space for Software installation

2.2 Supported Platforms

One of the following Windows Operating Systems

- Windows 2003
- Windows XP
- Windows 2008 Server
- Windows Vista
- Windows 7

One of the following SQL Server:

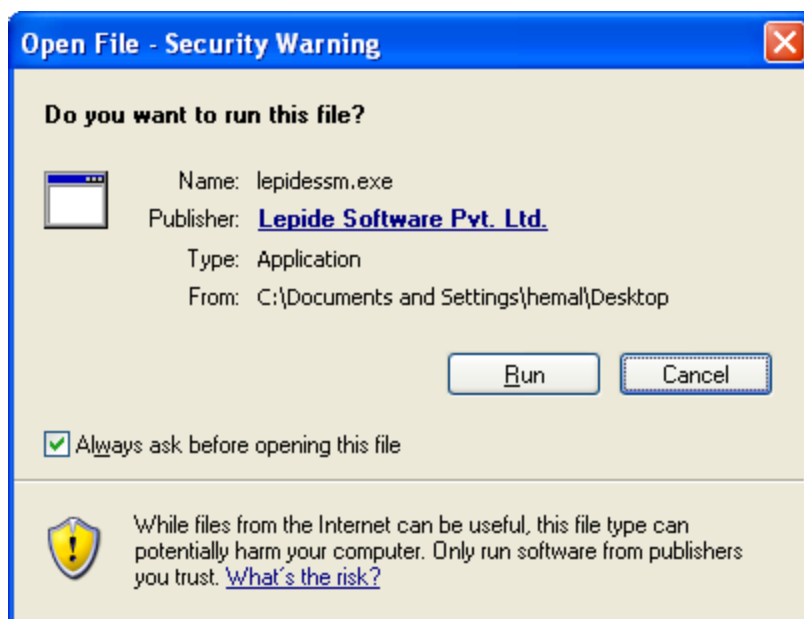
- SQL Server 2000
- SQL Server 2005
- SQL Server 2008 and SQL Server 2008 R2

3. Installing Lepide SQL Storage Manager

Before you start installing the software, make you sure that the software installer file is available on your computer. If the file is not available then you can download the file from our Website - <http://www.lepide.com/sql-storage-manager/>

After you have downloaded the installer file, execute the following steps to install the software:

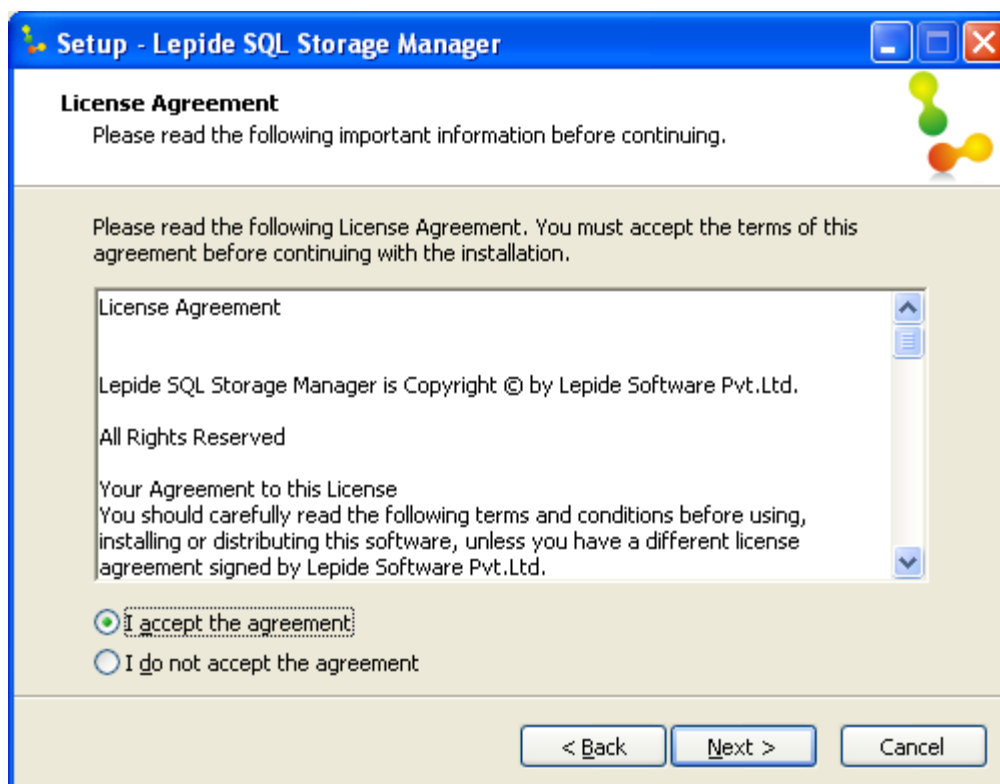
1. Double-click the Lepide SQL Storage Manager 's installer file and then click Run:



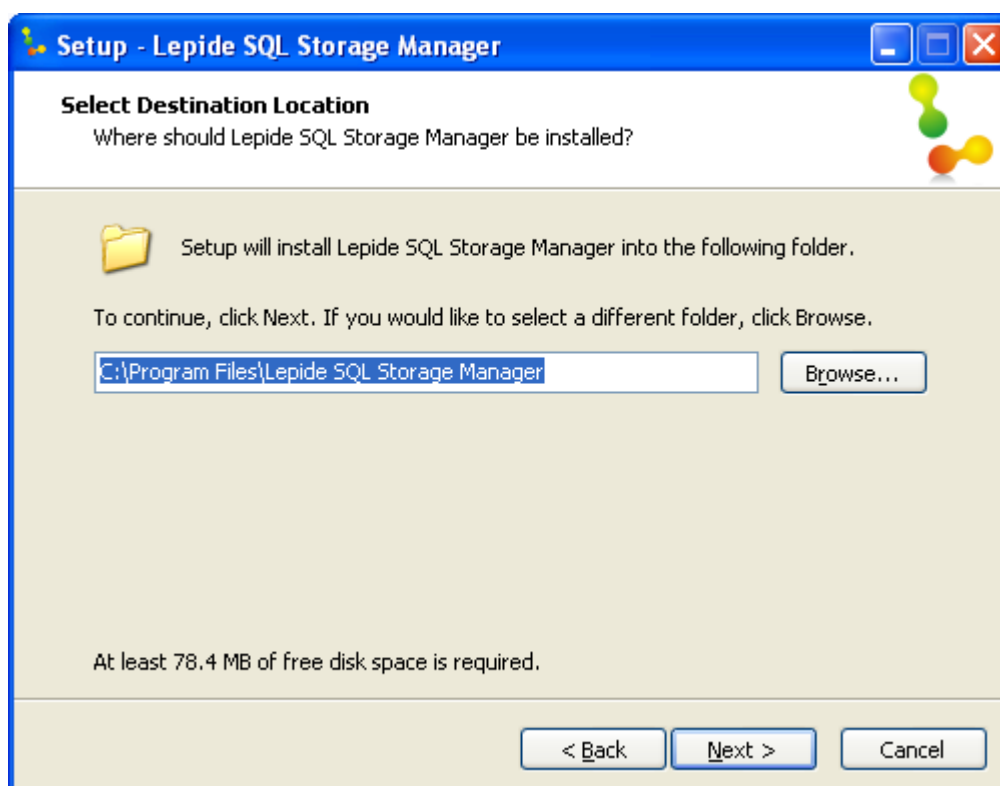
2. Lepide SQL Storage Manager Setup Wizard will open:



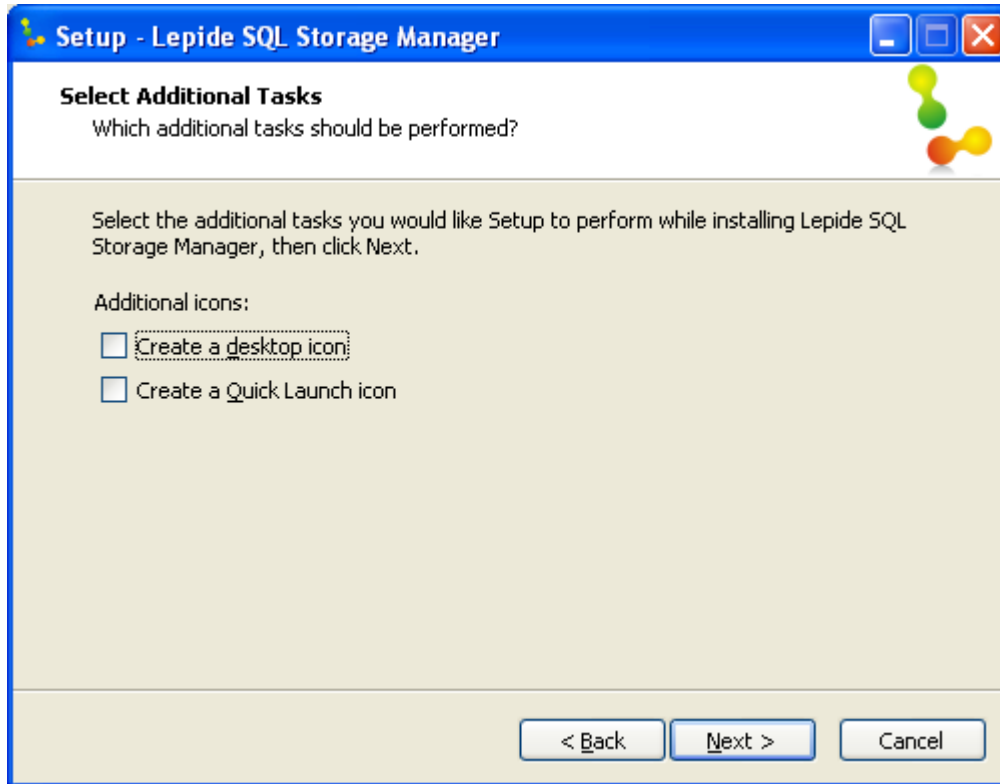
3. Select "I accept the agreement" option and click Next to continue further:



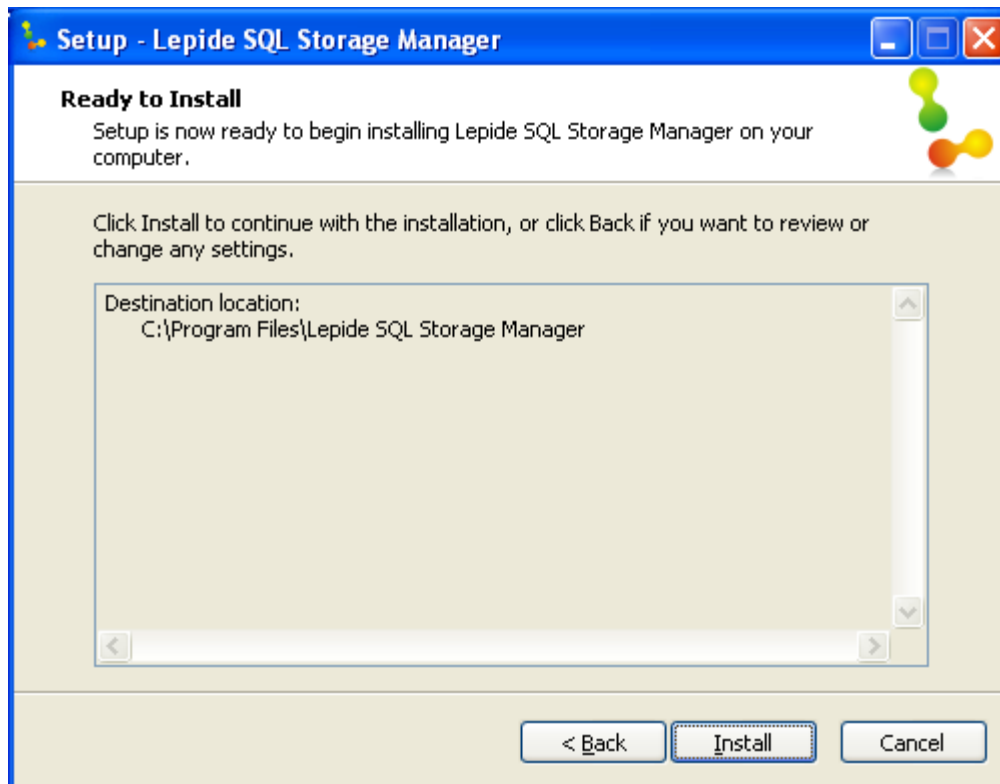
4. Now select destination location where the software will be installed:



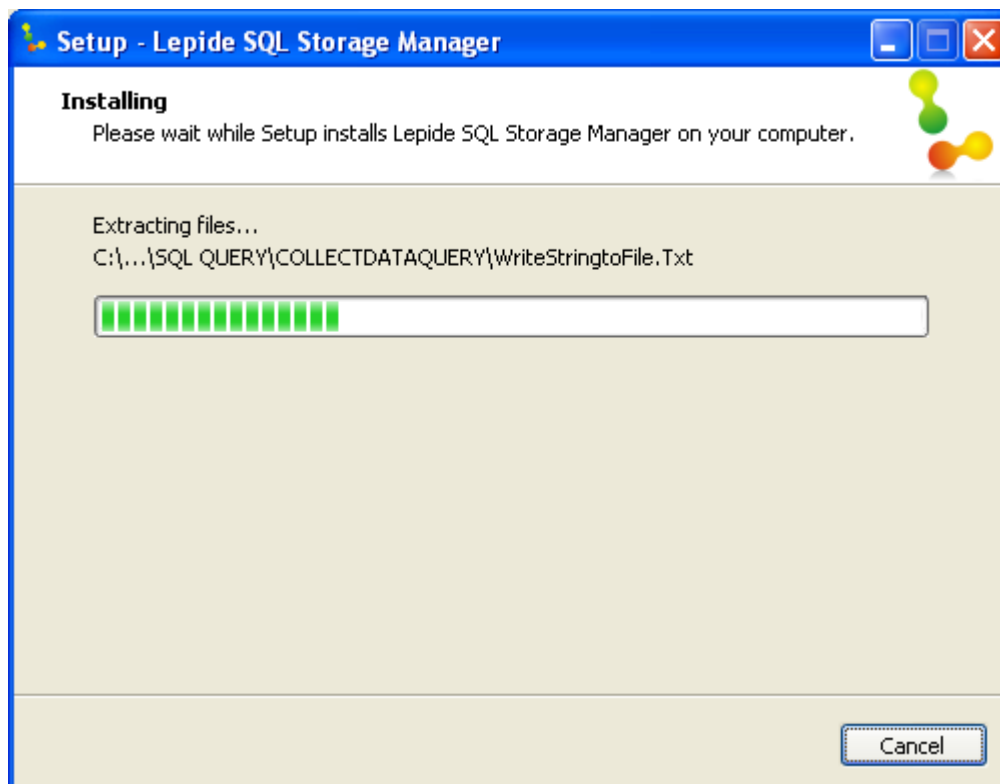
5. Select Start Menu Folder to create program's shortcut and click Next:



6. Setup is now ready to start the installation process.



7. Click Install to start installation. Installation process has started:

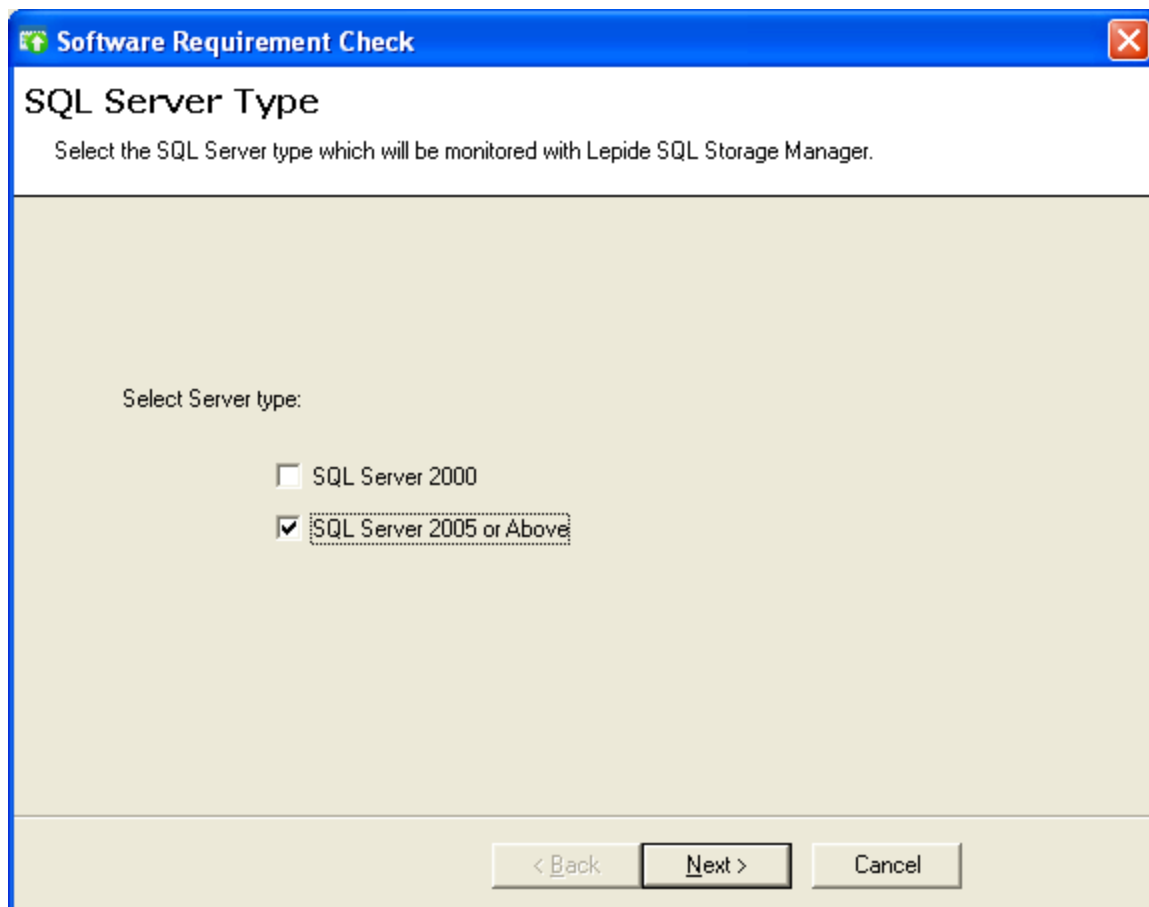


- When the installation process completes “**Completing the Lepide SQL Storage Manager Wizard**” message appears on the software installation window:

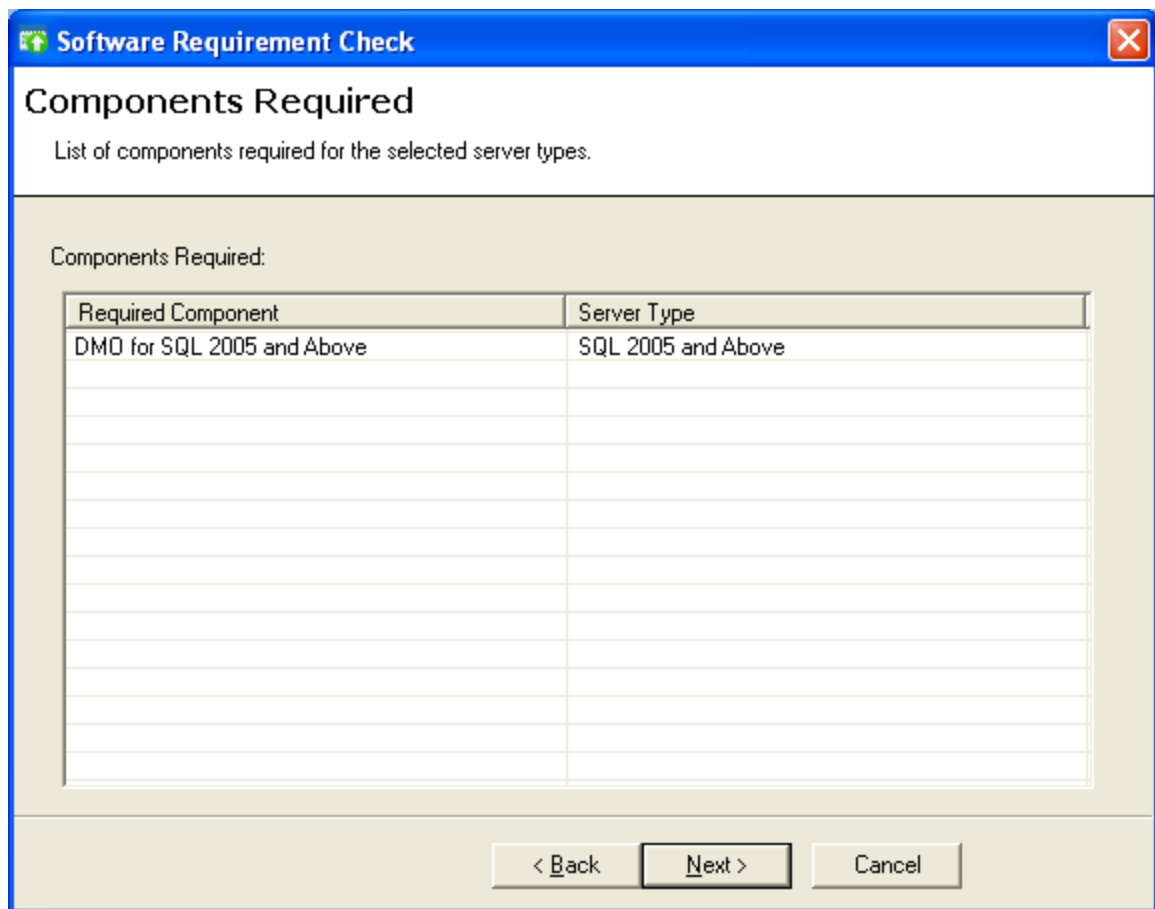


Check the **Launch Software Requirement Check Wizard** option if you want to check system requirements to manage SQL storage.

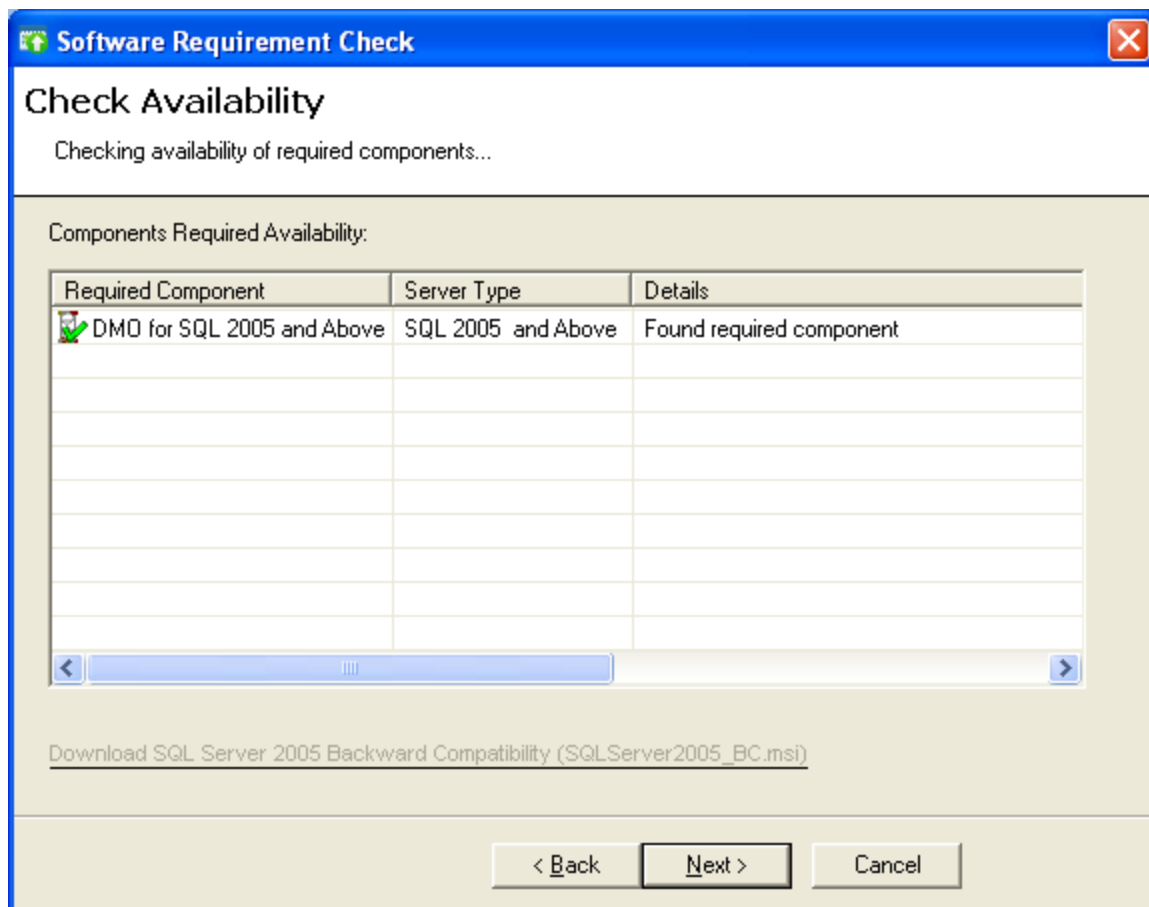
- Click the **Finish** button to launch the **Software Requirement Check Wizard**. Here in **Software Requirement Check Wizard** select SQL server type and click next to continue further:



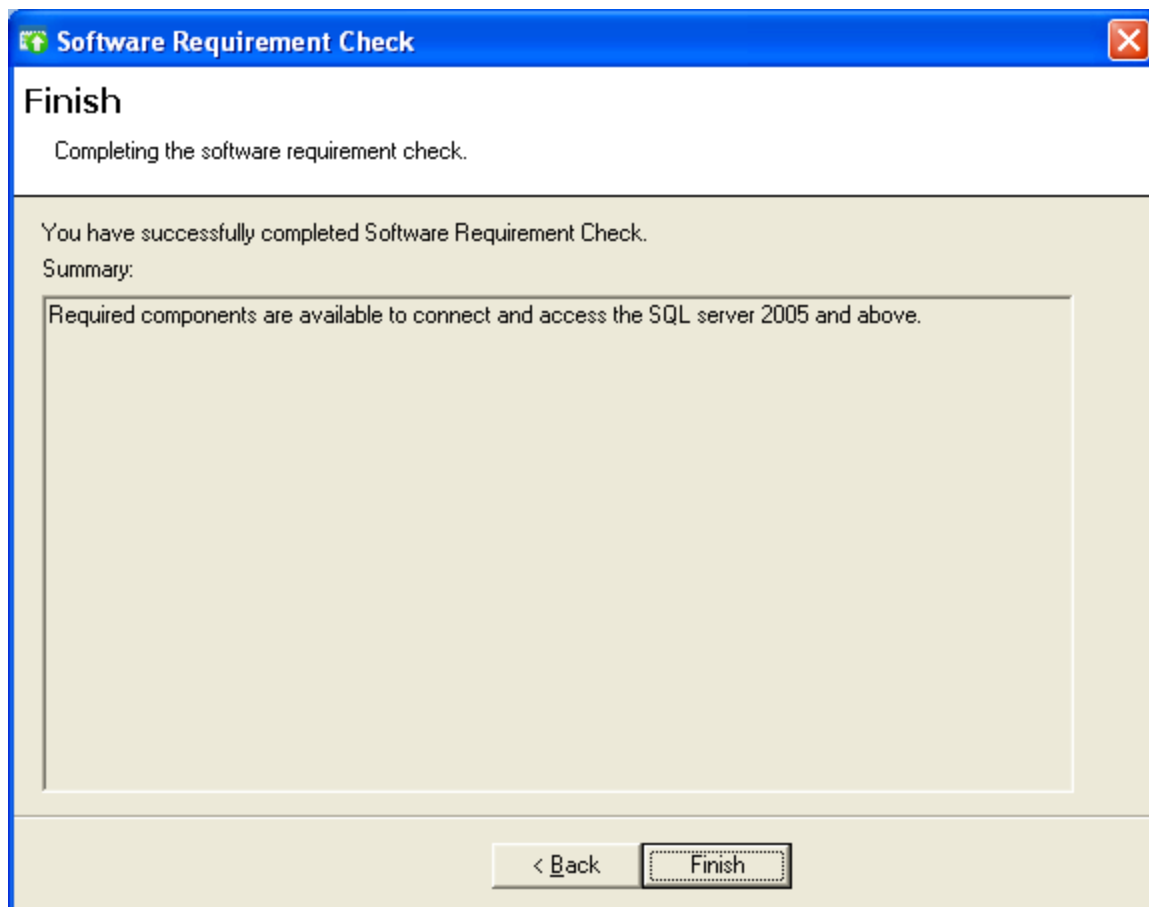
11. Components required for the selected server type will get listed:



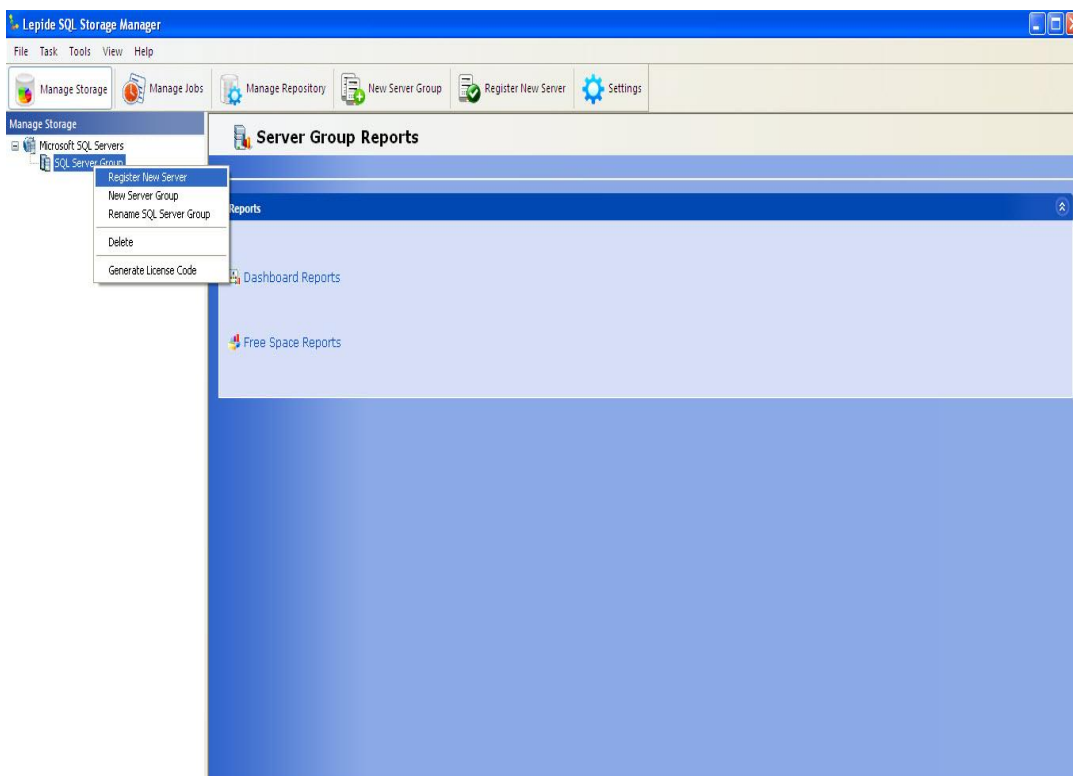
12. Software will check the availability of required component and will show the availability status:



13. Click Next. A message saying “You have successfully completed the software requirement check” will appear:



14: Click Finish to launch the software:



Here you can get started with Lepide SQL Storage Manager by registering new Server.

4. Un-installing Lepide SQL Storage Manager

There can be a situation when you need to uninstall the Lepide SQL Storage Manager. The software can be uninstalled from your system in the following two ways:

- Uninstall through **Windows Start Menu**
- Uninstall through **Control Panel**

4.1: Un-installing Lepide SQL Storage Manager from Windows Start Menu

To remove the Lepide SQL Storage Manager Software from Start Menu follow the instructions below:

1. Click **Start > All Programs > Lepide SQL Storage Manager > Uninstall Lepide SQL Storage Manager**. A warning/confirmation message before un-installing will be displayed on the screen.



2. Click the **Yes** button to uninstall the software



3. Click the **OK** button to complete the un-installation process

4.2: Un-installing Lepide SQL Storage Manager from Control Panel

To remove the Lepide SQL Storage Manager Software from Control Panel, follow the steps below:


1. Click **Start > Control Panel**. The Control Panel window appears.
2. Double-click the **Add or Remove Programs** icon. A list of the programs installed on your computer appears.
3. Select Lepide SQL Storage Manager and click the **Remove** button. A warning/confirmation message before un-installing the software will be displayed on the screen.



4. Click the **Yes** button to un-install the software.



5. Click the **OK** button to complete the un-installation process.

 Before you start uninstalling the Lepide SQL Storage Manager, make sure that the software is not running on your system in the background.

Lepide SQL Storage Manager is successfully uninstalled from your computer system.