

LepideAuditor Suite

What's new in
Version 16.4?

Table of Contents

1. Introduction.....	3
2. New Additions.....	3
2.1 Event Log Clear Report.....	3
2.2 Concurrent Logon Report.....	3
2.3 Timeout Settings.....	4
3. Enhancements.....	4
3.1 Fixed the Storage Consumption Issue.....	4
3.2 Improved Radar Tabs	5
3.3 Improved Current Permission Reports	5
3.4 Bug Fixes.....	5



1. Introduction

This document explains the new additions and enhanced features introduced in the newly released version 16.4 of LepideAuditor Suite.

2. New Additions

2.1 Event Log Clear Report

Security Logs in Event Viewer display the historical information of security events. To keep a check of when these crucial events are deleted, a new report has been added in the solution.

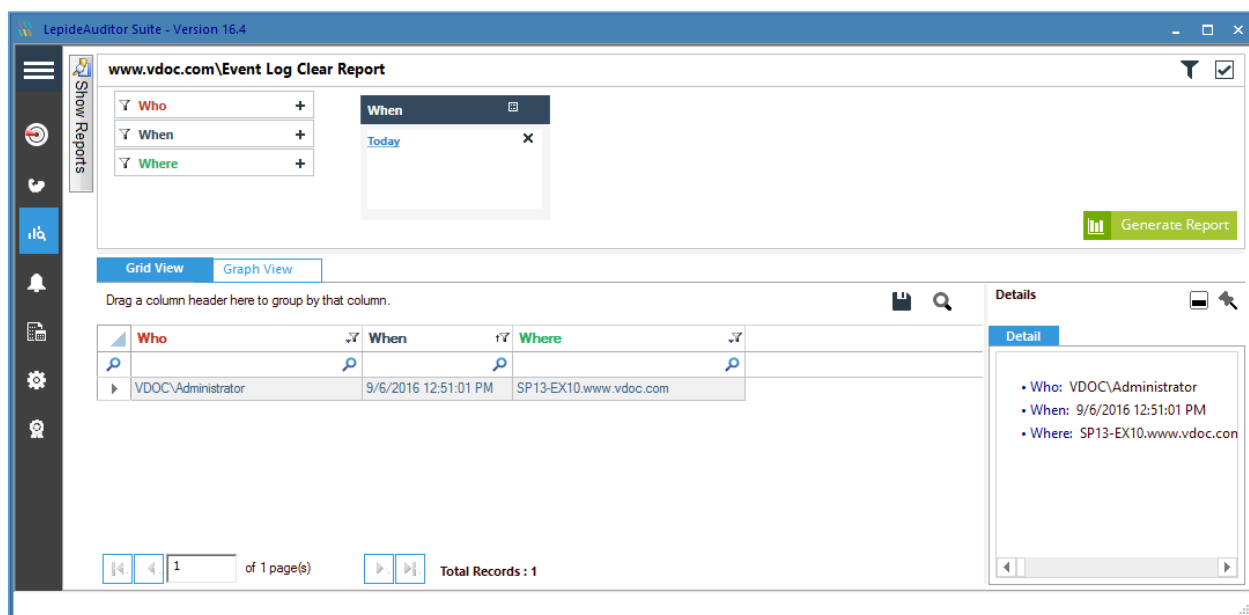


Figure 1: Event Log Clear Report

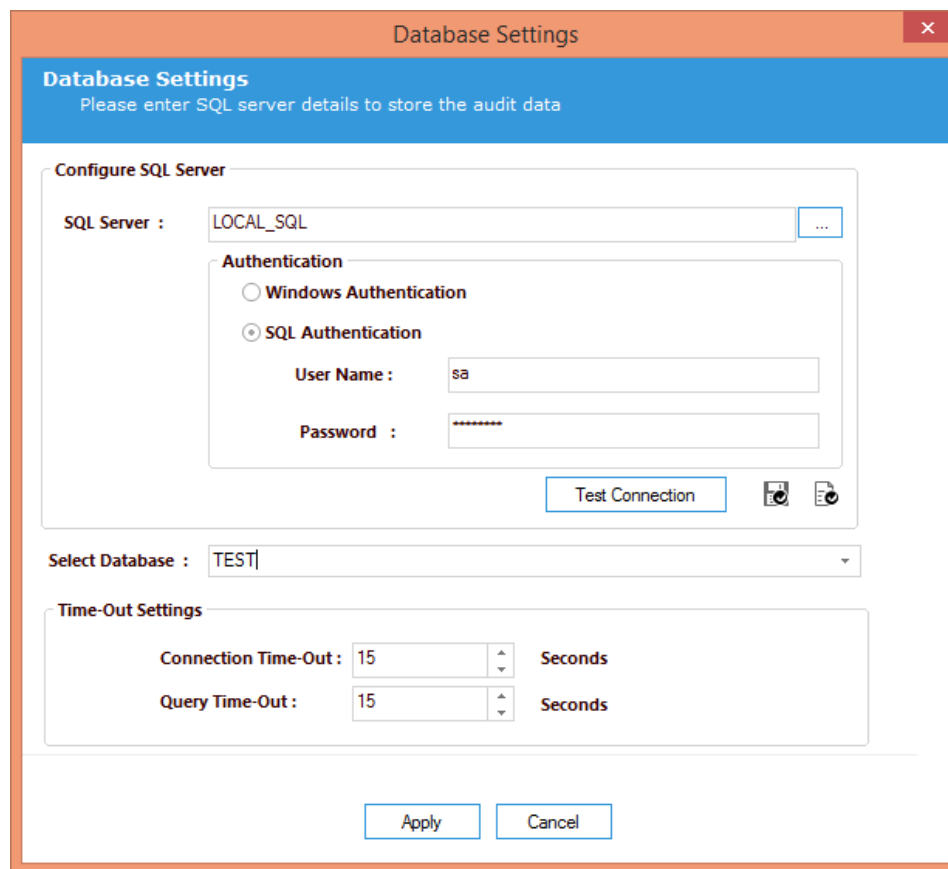
2.2 Concurrent Logon Report

It is very important to track users who concurrently log on to multiple machines, especially when these machines are not located in proximity with each other. Much of the time the reasons for this are benign - administrators installing software on different machines, for example - but occasionally it can be the result of password sharing or theft.

A new report, named "Concurrent Logons", has been included in the solution that displays the successful logons made by a user concurrently on different computers.

2.3 Timeout Settings

Connection Timeout and Query Timeout have been added in the Database Settings of Current Permission Settings. The default value for both timeout settings is 15 seconds, which can be modified. The solution now does not wait for an infinite period to connect to the database. If it has not connected within a specified period, the connection ends.



The screenshot shows a dialog box titled "Database Settings" with a close button (X) in the top right corner. The dialog has a blue header bar with the text "Database Settings" and "Please enter SQL server details to store the audit data". Below the header, there is a section titled "Configure SQL Server" which contains a text box for "SQL Server" with the value "LOCAL_SQL" and a browse button "...". Underneath is an "Authentication" section with two radio buttons: "Windows Authentication" (unselected) and "SQL Authentication" (selected). Below the radio buttons are text boxes for "User Name" with the value "sa" and "Password" with masked characters "*****". A "Test Connection" button is located at the bottom right of this section. Below the "Configure SQL Server" section is a "Select Database" dropdown menu with the value "TEST". At the bottom of the dialog is a "Time-Out Settings" section with two rows: "Connection Time-Out" and "Query Time-Out", each with a numeric input field set to "15" and a "Seconds" label. At the very bottom of the dialog are "Apply" and "Cancel" buttons.

Figure 2: Timeout Settings

3. Enhancements

3.1 Fixed the Storage Consumption Issue

In some cases, during tasks like generating audit reports, internal folders were consuming more space on the disk than previously expected.

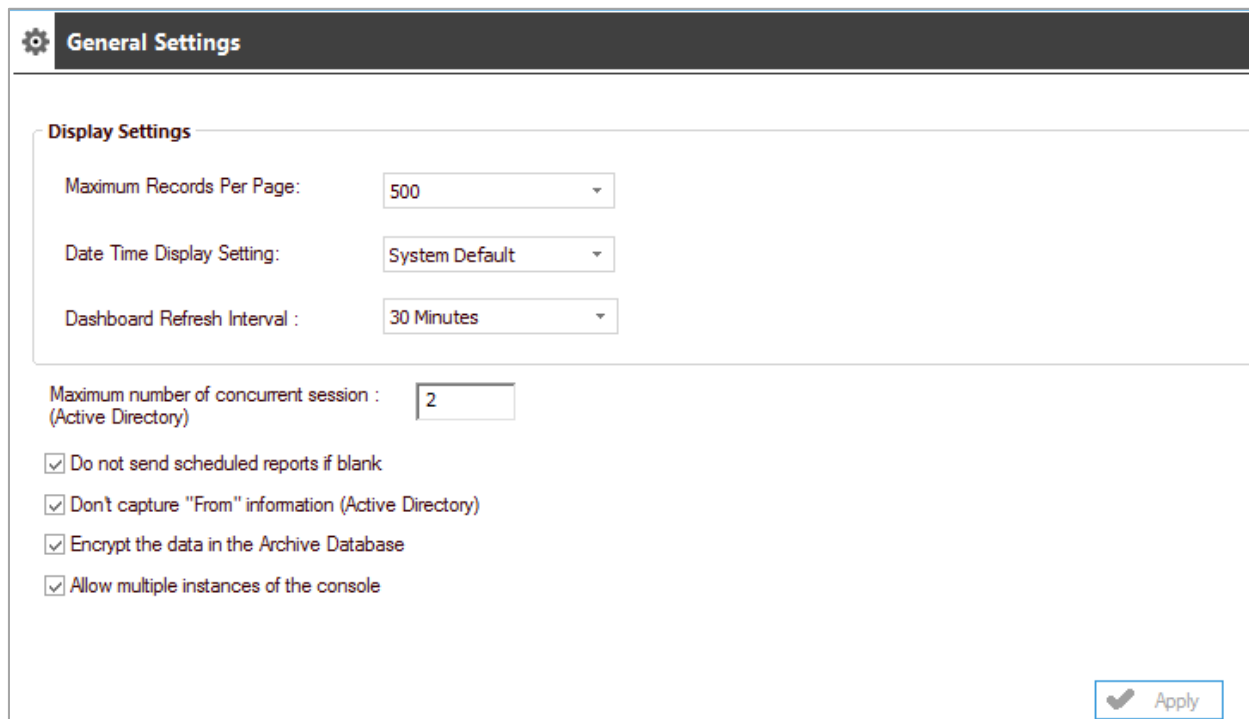
This storage consumption issue has been fixed in this new version.

3.2 Improved Radar Tabs

Previously, all the tabs in the "Radar" generated reports simultaneously. This was a resource intensive process and sometimes caused the solution to hang occasionally.

From this version, only the active tab in Radar collects changes and updates the graphs accordingly. Other tabs will refresh their views only when the user browses through them.

The user can also specify the interval after which the Radar Tabs will refresh graph reports.



General Settings

Display Settings

Maximum Records Per Page: 500

Date Time Display Setting: System Default

Dashboard Refresh Interval : 30 Minutes

Maximum number of concurrent session : (Active Directory) 2

Do not send scheduled reports if blank

Don't capture "From" information (Active Directory)

Encrypt the data in the Archive Database

Allow multiple instances of the console

Apply

Figure 3: General Settings

3.3 Improved Current Permission Reports

The time taken to scan data set current permissions and generate the report has been reduced. Even reports containing huge records are generated rapidly.

Database handling has also been improved and now, it takes less space to store records.

3.4 Bug Fixes

Minor bugs fixes offer better functionality.