

LepideAuditor™

What's New in Version 17.1?

Table of Contents

1. Introduction.....	2
2. New Additions.....	2
2.1 Execute Custom Script through Alerts	2
2.2 Auditing of Three-Tier SharePoint Server	3
3. Enhancements.....	3
3.1 Improved Radar Tab	3
3.2 Improved License Information Tab	4
3.3 Improved Scanning of File Permissions.....	5
3.4 Restore Passwords.....	5
3.5 Multiple IP Addresses in File Server Auditing.....	5
3.6 Logon/Logoff Reports show "Computer Names"	5
4. Minor Bug Fixes.....	5

1. Introduction

This document explains the new additions and enhanced features introduced in the newly released LepideAuditor 17.1.

2. New Additions

2.1 Execute Custom Script through Alerts

The administrator can now choose to run a customized script whenever a critical change in Active Directory, Group Policy, Exchange Server, SQL Server, File Server or SharePoint Server is detected. The solution allows the user to use any PowerShell Script, Batch file (.BAT) or VB Script. The user can also choose to send the notifications whenever the script is executed. This feature is available for Auditing Alerts only.

The solution also allows you to create different user profiles so that a particular alert profile can be selected to execute a script; other profile can be chosen to run another script.

NOTE: Lepide does not provide scripts, users must create the customized script themselves. For this reason, Lepide does not guarantee the result of any user-created script.

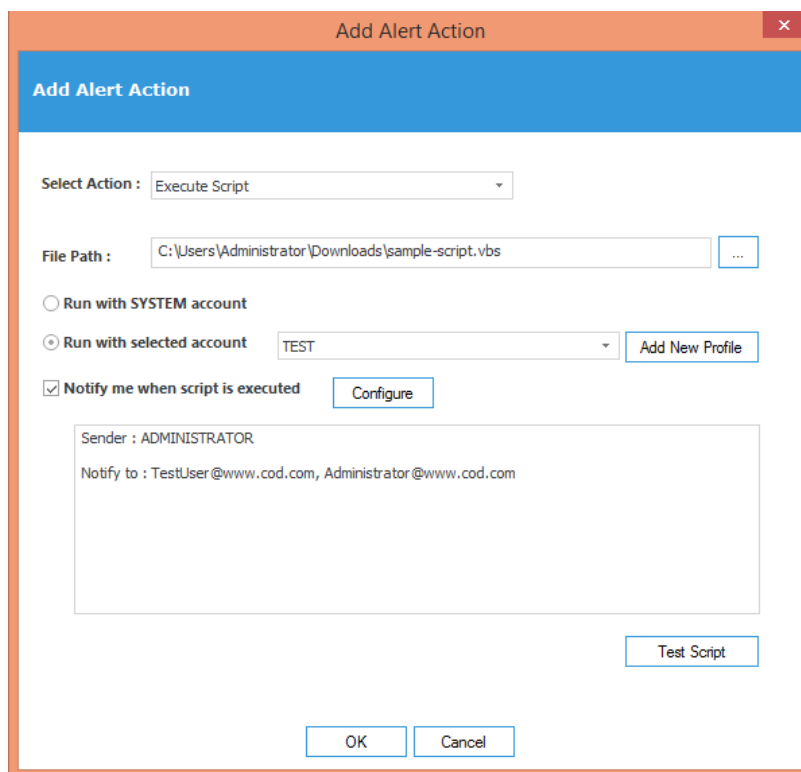


Figure 1: Execute Script

2.2 Auditing of Three-Tier SharePoint Server

LepideAuditor 17.1 now supports the auditing of three-tier SharePoint Server. The user must provide the IP Address of the computer that hosts SharePoint's Application including Central Administration.

3. Enhancements

3.1 Improved Radar Tab

When adding multiple servers, they are displayed under their single Component Radar Tab. You can use the the drop down menu in a Radar Tab to view graphical reports on different servers.

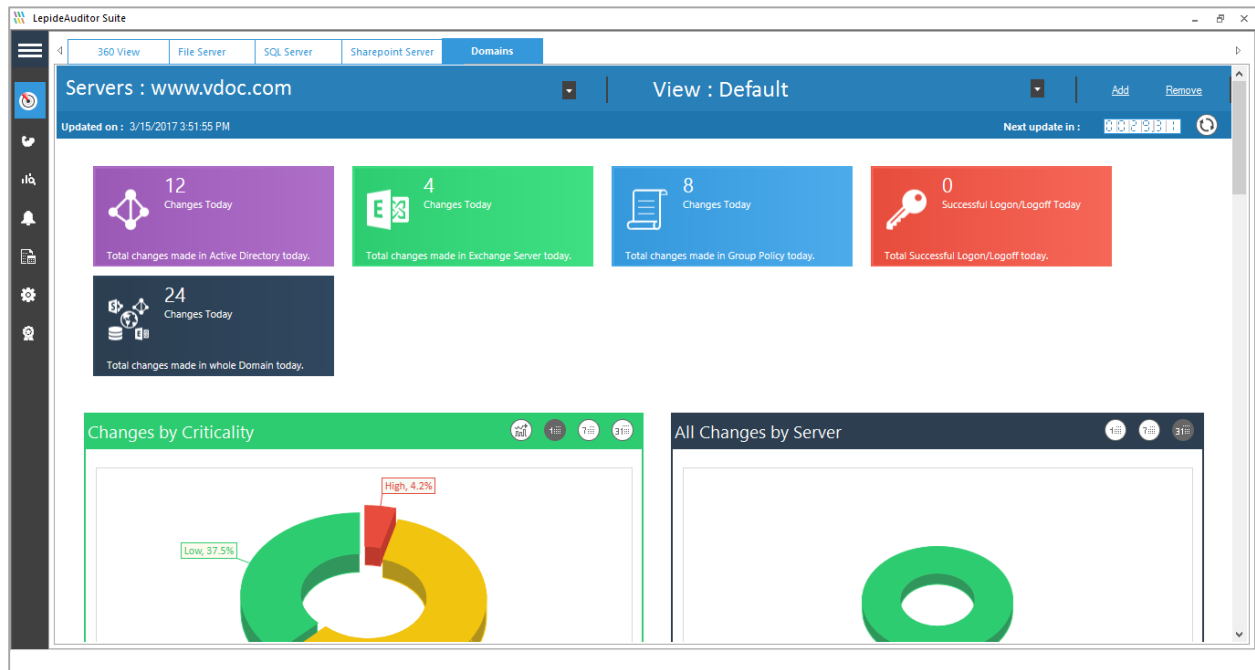


Figure 2: Updated Radar Tabs for Domain

3.2 Improved License Information Tab

The License Information Tab interface has been improved. Added server components are now listed in a drop-down menu at the top. Users can select the desired server component to view and manage the license.

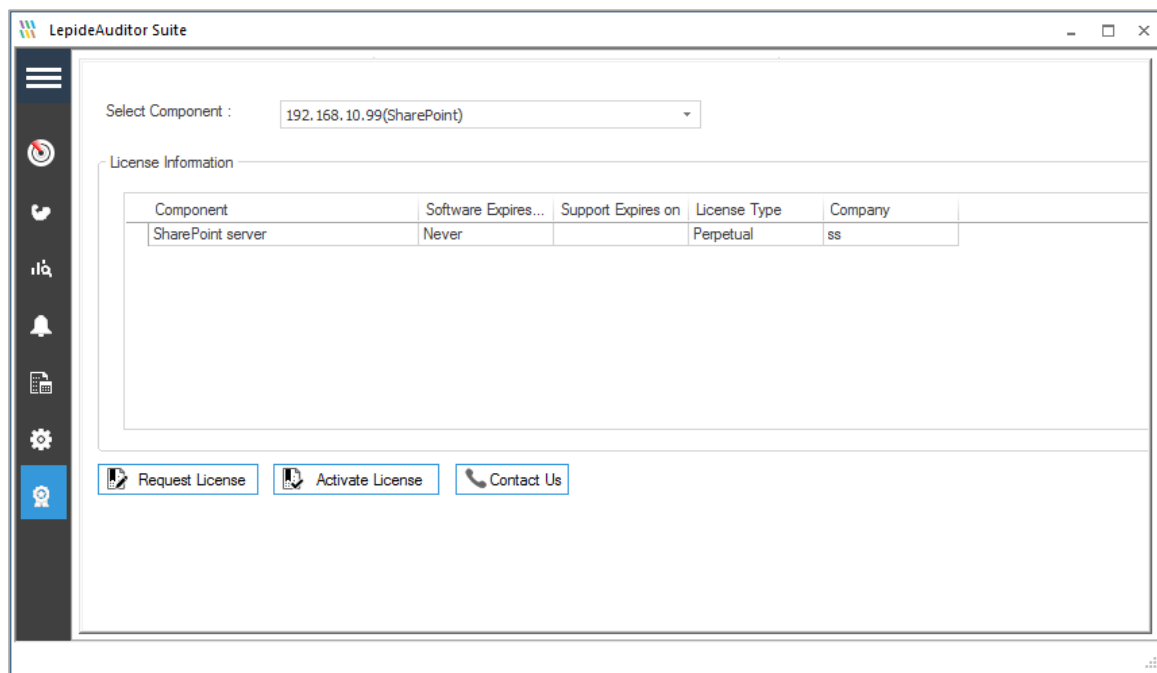


Figure 3: Updated License Information Tab

3.3 Improved Scanning of File Permissions

The following enhancements have been made to the scanning of File Permissions.

1. LepideAuditor can now scan and correctly display the permissions those shared files with '\$' as a character in their names.
2. The solution now scans permissions of files that have a long file path.

3.4 Restore Passwords

While restoring a deleted user using the Lepide Object Restore Wizard, the password of that user can also be restored. However, the administrator must check a prerequisite setting in ADSI Edit to do so.

3.5 Multiple IP Addresses in File Server Auditing

If the computer where LepideAuditor is installed has multiple IP Addresses, then earlier versions of the solution used to encounter issues auditing other file servers. This issue has now been solved.

3.6 Logon/Logoff Reports show "Computer Names"

Logon/Logoff Audit Reports now display names of computers along with IP Addresses where the logon or logoff attempt was made by a user.

4. Minor Bug Fixes

Minor bug fixes offer better functionality for users.