

# Lepide Event Log Manager

## Installation and Uninstallation Guide

# Table of Contents

1. Introduction.....	2
2. Purpose of this Document.....	2
3. System Requirements.....	2
3.1 Prerequisites.....	3
3.2 Supported Platforms.....	3
3.3 Supported SQL Servers .....	3
3.4 Minimum System Requirements .....	3
4. Installing Lepide Event Log Manager.....	4
5. Uninstalling Lepide Event Log Manager .....	13
6. Support.....	17
7. Trademarks .....	17

## 1. Introduction

Welcome to the Installation Guide of Lepide Event Log Manager. In this installation guide, we have covered installation of Lepide Event Log Manager. Apart from the installation of the software, the un-installation process of the software is also included in this installation guide.

## 2. Purpose of this Document

The purpose of this document is to guide you through the process of installation and un-installation of Lepide Event Log Manager.

## 3. System Requirements

Before you start installing the Lepide Event Log Manager software, make sure that your computer meets the following requirements.



## 3.1 Prerequisites

- Microsoft .Net Framework 4
- SQL Server (located anywhere in the network)

## 3.2 Supported Platforms

- One of the following operating systems (32/64-bit version):
- Windows Server 2008 (32/64 bit)
- Windows Server 2008 R2 (32/64 bit)
- Windows XP (32/64 bit)
- Windows 7 (32/64 bit)
- VMWare

## 3.3 Supported SQL Servers

- SQL Server 2000
- SQL server 2005
- SQL Server 2005 (Express Edition)
- SQL Server 2008
- SQL Server 2008 (Express Edition)
- SQL Server 2008 R2
- SQL Server 2012

## 3.4 Minimum System Requirements

- 2 GB RAM
- Disk space as per database size (2 GB minimum)

Note: If you are using Windows XP 64 bit on VMWare then SQL Express Edition is recommended.



## 4. Installing Lepide Event Log Manager

Before you start installing the software, make you sure that the software installer file is available on your computer. If the file is not available, then you can download the file from our Website

After you have downloaded the installer file, execute the following steps to install the software:

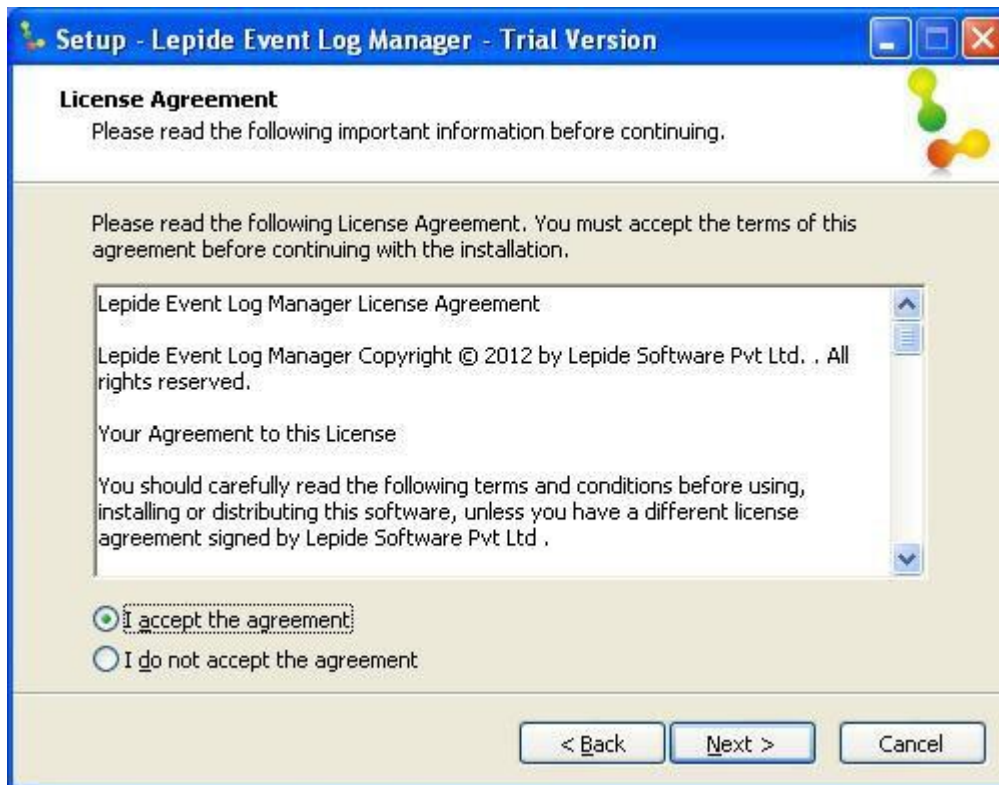
- Double-click the Lepide Event Log Manager's installer file and then click Run



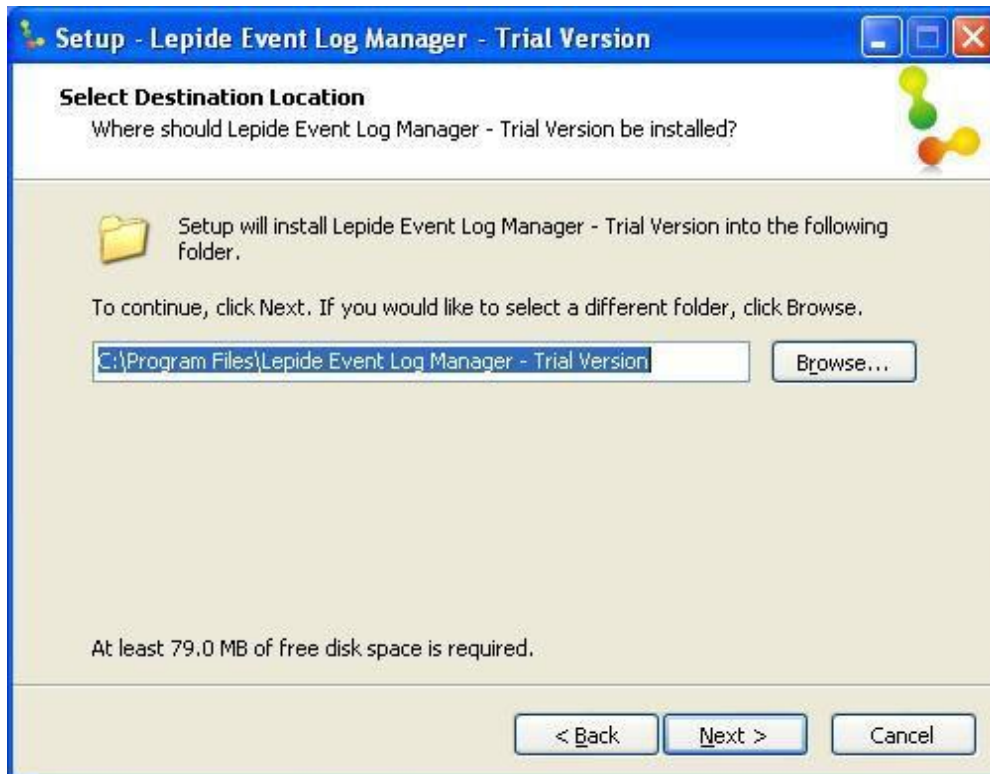
- Lepide Event Log Manager Setup Wizard will open



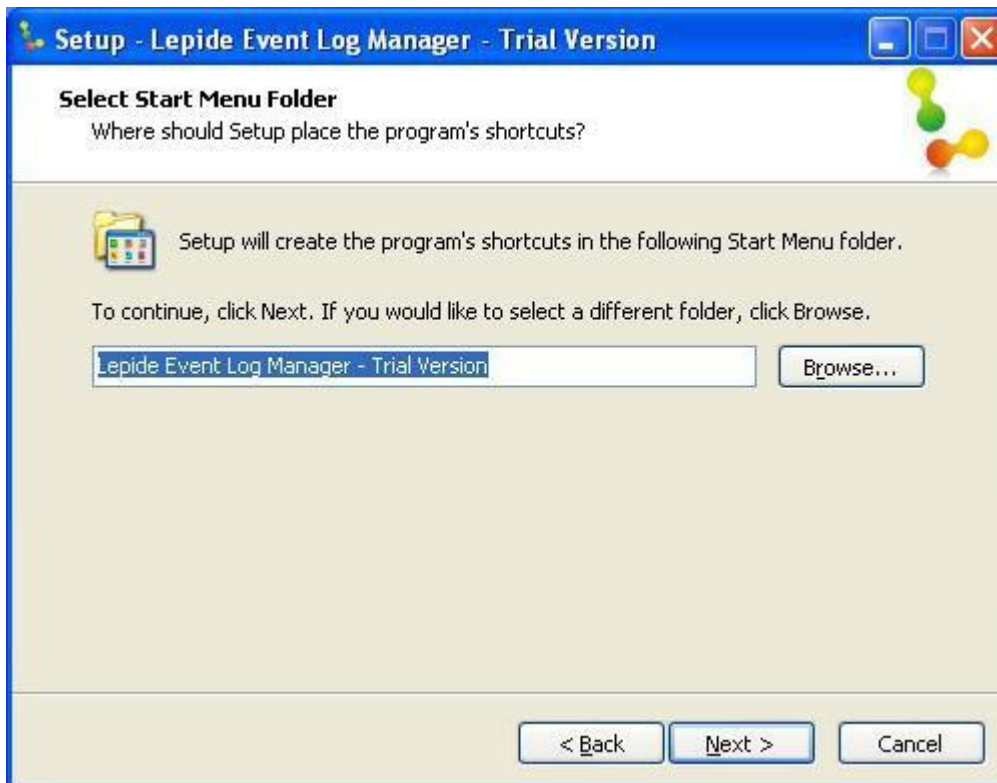
- Select "I accept the agreement" option and click Next to continue further



- Now select destination location where the software will be installed

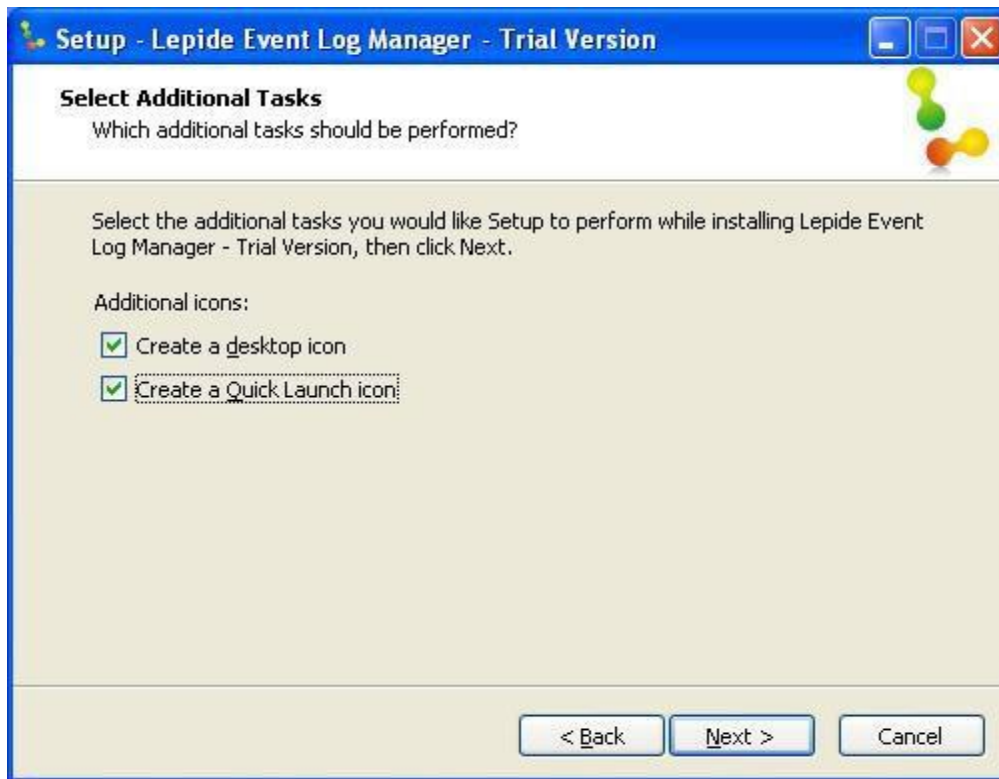


- Select the start menu folder where the shortcut to the software will be created

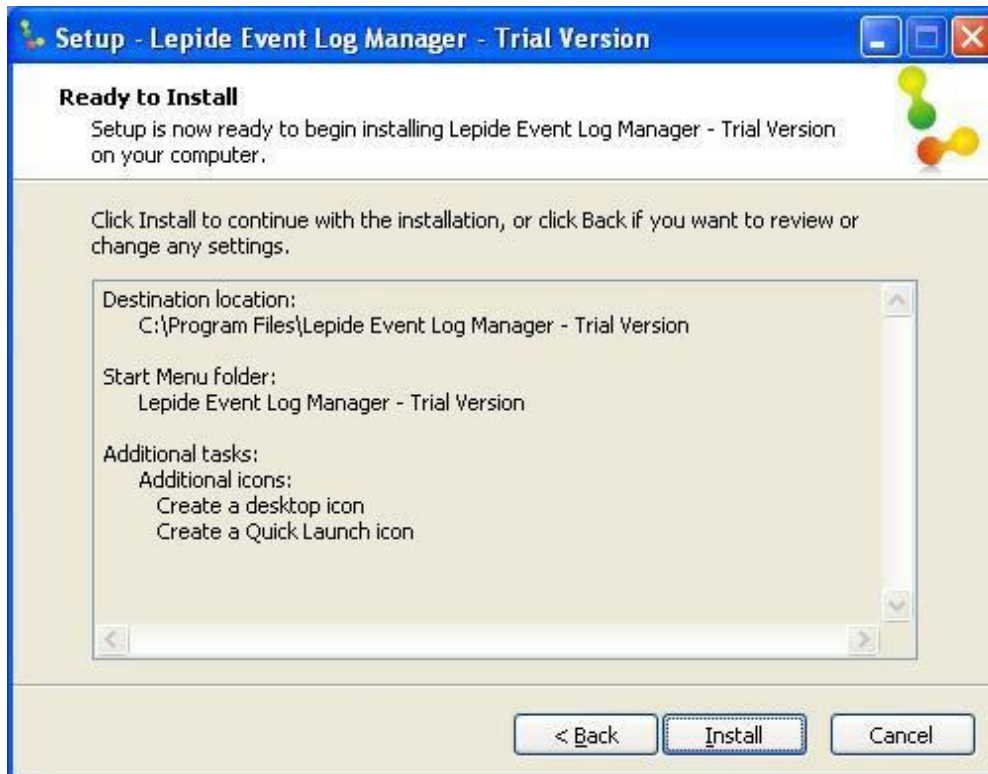


- Here select the required additional tasks and click Next

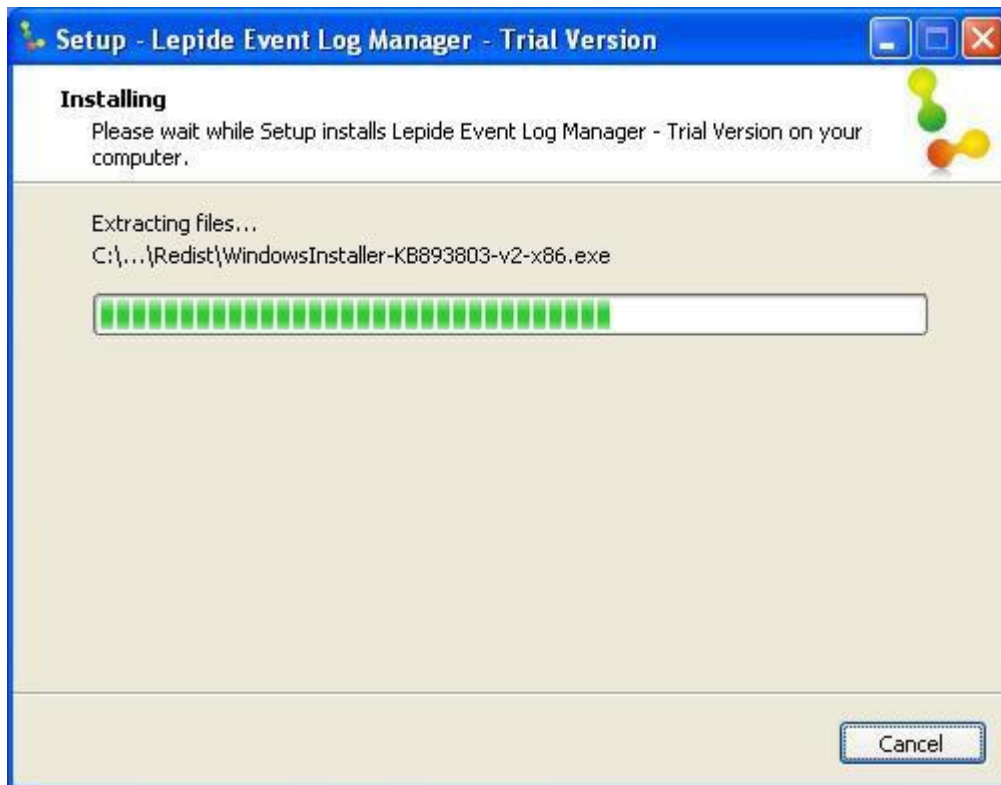




- Setup is now ready to start the installation process. Click Install to start installation



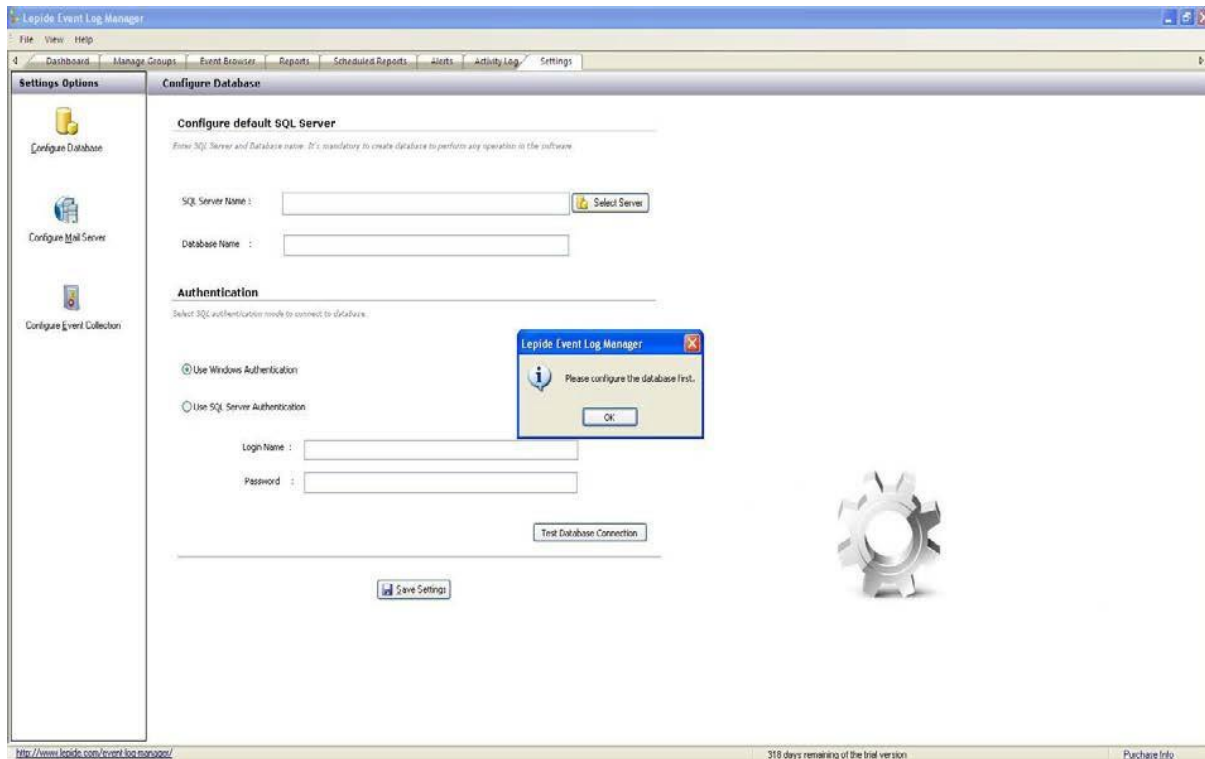
- Click Install to start installation. Installation process has started



- When the installation process completes "Completing the Lepide Event Log Manager -Trial Version Setup Wizard" message appears on the software installation window; click the **Finish** button to launch the software



- Here you can get started with Lepide Event Log Manager by configuring database



## 5. Uninstalling Lepide Event Log Manager

There can be a situation when you need to uninstall the Lepide Event Log Manager software. The software can be uninstalled from your system in the following two ways:

- Uninstall through Windows Start Menu
- Uninstall through Control Panel

Note- Before you start uninstalling the Lepide Event Log Manager software, make you sure that the software is not running.

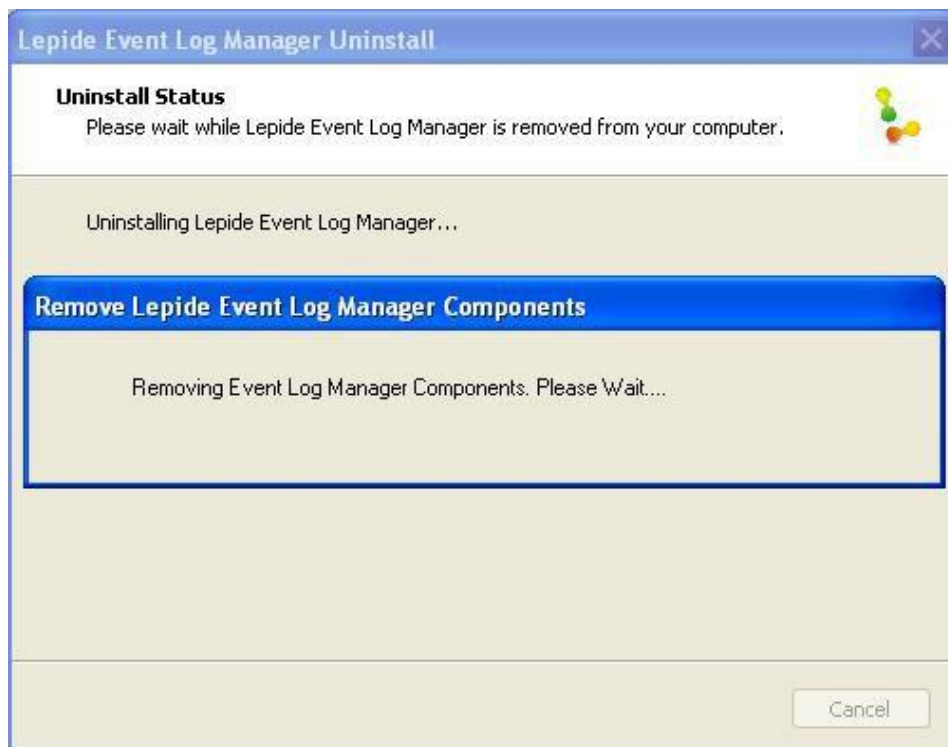
## 5.1 Uninstalling through Windows Start Menu

Execute the following steps to uninstall Lepide Event Log Manager through Windows Start menu

1. Click Start > All Programs > Lepide Event Log Manager > Uninstall Lepide Event Log Manager.
2. A confirmation message appears to let you affirm the un-installation process



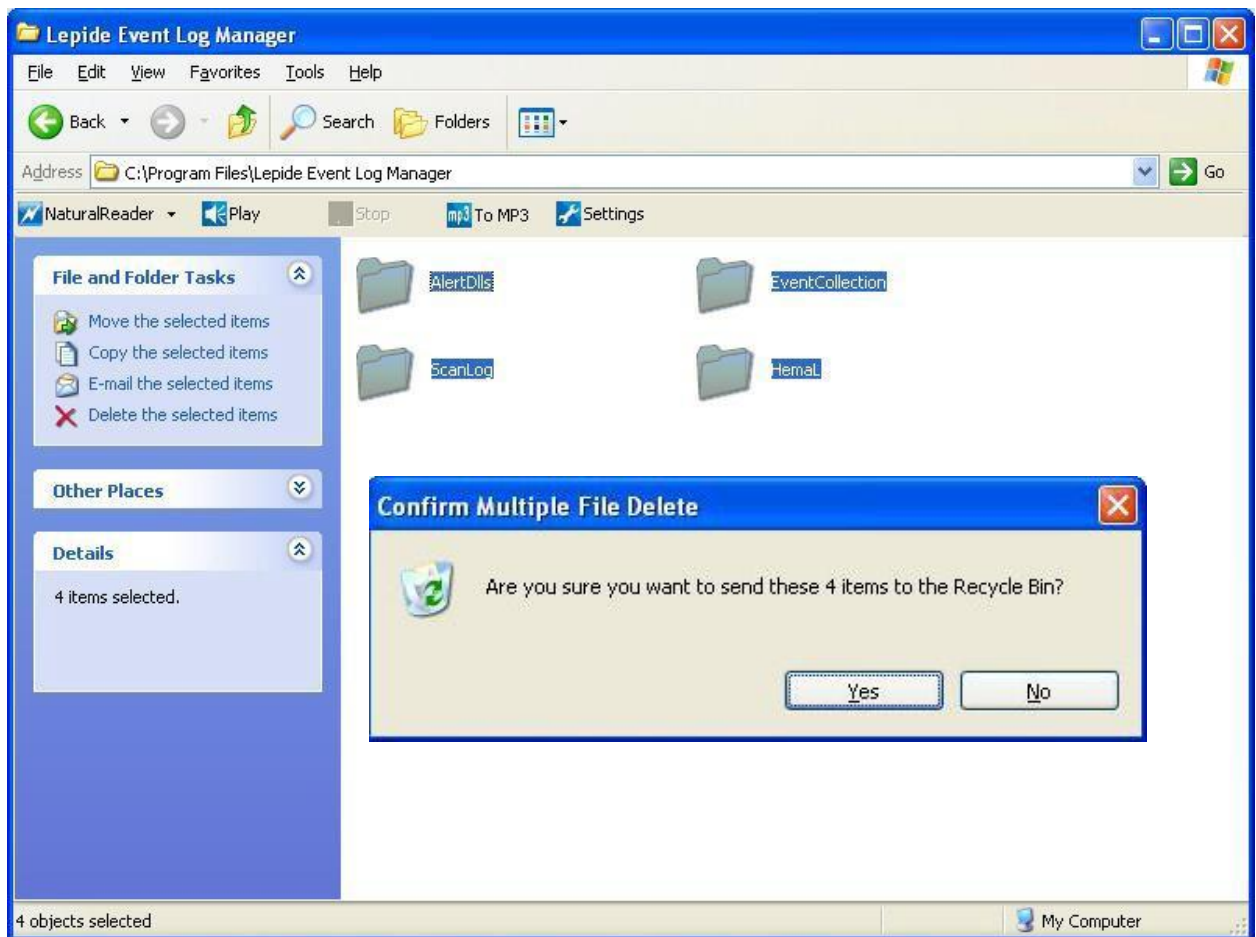
3. Click the Yes button to uninstall the software. Uninstall status will be displayed



4. Once the un-installation process is complete a completion message will appear



5. Click the OK button to finish the un-installation process
6. To remove remaining elements go to: C:\Program Files\Lepide Event Log Manager and remove all items manually



## 5.2 Uninstalling through Control Panel

Execute the following steps to uninstall Lepide Event Log Manager through Control Panel

1. Click Start -> Control Panel. Control Panel window appears.
2. Double-click the Add or Remove Programs icon. A list of the programs installed on your computer appears.
3. Select Lepide Event Log Manager and click the Remove button. A confirmation message before un-installing the software appears on the screen



4. Click the Yes button to un-install the software



5. Click the OK button to complete the un-installation process

Lepide Event Log Manager is successfully uninstalled from your computer system.



## 6. Support

If you are facing any issues whilst installing, configuring or using the solution, you can connect with our team using the below contact information.

### Product experts

USA/Canada: +1(0)-800-814-0578

UK/Europe: +44 (0) -208-099-5403

Rest of the World: +91 (0) -991-004-9028

### Technical gurus

USA/Canada: +1(0)-800-814-0578

UK/Europe: +44 (0) -208-099-5403

Rest of the World: +91(0)-991-085-4291

Alternatively, visit <http://www.lepide.com/contactus.html> to chat live with our team. You can also email your queries to the following addresses:

[sales@Lepide.com](mailto:sales@Lepide.com)

[support@Lepide.com](mailto:support@Lepide.com)

To read more about the solution, visit <https://www.lepide.com/event-log-manager/>

## 7. Trademarks

Lepide Event Log Manager is a copyright work of Lepide Software Private Limited. Windows 95®, Windows 98®, Windows ME®, Windows NT®, Windows 2000 Server®, Windows 2000 Advanced Server®, Windows XP®, Windows Vista, Windows 7, and MS-DOS, are registered trademarks of Microsoft Corporation.

